



NM 31-128 ROADWAY IMPROVEMENTS PROJECT, LEA AND EDDY COUNTIES, NEW MEXICO

PUBLIC OUTREACH AND COMMENT REPORT SUMMARY

NEW MEXICO DEPARTMENT OF TRANSPORTATION

CONTROL NO.: CN 2104330

DATE: FEBRUARY 2022



Prepared For:



Prepared by:



WSP USA, INC.
2440 LOUISIANA BOULEVARD, SUITE 400
ALBUQUERQUE, NM 87110



TABLE OF CONTENTS

1	INTRODUCTION.....	1
2	PUBLIC INVOLVEMENT PROCESS.....	1
3	PUBLIC COMMENTS SUMMARY.....	3
APPENDIX A	PUBLIC MEETING NOTICES.....	A-1
A.1	Public Meeting Number 1, August 31, 2021	A-1
A.2	Public Meeting Number 2, September 14, 2021.....	A-11
APPENDIX B	POWERPOINT PRESENTATIONS	B-1
APPENDIX C	PUBLIC MEETINGS ATTENDANCE LIST	C-1
C.1	Public Meeting Number 1.....	C-1
C.2	Meeting Number 2, City of Jal	C-3
APPENDIX D	PUBLIC COMMENTS RECEIVED	D-1

1 INTRODUCTION

The following public meeting summary provides a synopsis of the public outreach process and effort to date, including input received, for the NM 31-128 Roadway Improvements Phase I-A/B Study in Lea and Eddy Counties, New Mexico (Control Number [CN] 2104330). Public involvement and stakeholder coordination for the project began in summer 2020 and has continued into 2022.

2 PUBLIC INVOLVEMENT PROCESS

The NM 31/128 Corridor Study area serves a broad and diverse set of stakeholders including residents and community members, business owners predominantly related to oil, natural gas, and potash extractive industries, freight and trucking companies, schools, local utilities, emergency service providers, the United States Postal Service, private landowners, federal and state land managing agencies, and general users of the highway. A project-specific Context Sensitive Solutions Public Involvement Plan (PIP) has been developed and on file at the NMDOT Environmental Bureau. A project logo was developed to distinguish the materials prepared for this project, CN 2104330, from other NMDOT projects currently under development in Eddy and Lea Counties (Figure 1). Additionally, a NMDOT project-specific website was created to host project information for the public and other interested parties (<https://nm31-128project.nmdotprojects.org/>).

Figure 1: Project Logo



Due to the COVID-19 pandemic, in-person community and stakeholder engagement was not feasible for the Phase IA/B Study efforts, which necessitated development of a virtual engagement strategy to reach a wide audience and seek effective tools for public participation. Initial scoping letters announcing the project commencement and requesting input were sent to interested agencies on April 5, 2020. Based on the context of the project corridor, the project team chose to host a general public meeting and a City of Jal-focused public meeting. Additional and focused stakeholder meetings and coordination have been ongoing to engage with key partners and gather input as part of the decision-making process. The following summarizes our context-sensitive approach to outreach and engagement to date.

The project team held a live, virtual public involvement meeting on August 30, 2021 at 6:00pm. The project team selected the Zoom virtual meeting platform for the meeting because of its versatility in allowing participants to join over the internet or via telephone. Considering the context of the project segment through the City of Jal, an additional virtual public meeting was held two weeks later, on September 14, 2021 at 6:00pm. At the request from City of Jal leadership, the project team offered live

Spanish translation concurrent with the English language presentation through the Zoom platform during the meeting event.

To provide notice of the August 30 public meeting, an advertisement was published in the Hobbs Sun and Carlsbad Argus newspapers two weeks prior to the event (**Appendix A**). In addition, a mailing list of over 150 contacts was generated using grassroots outreach, which included stakeholders; business associations; federal and state agencies; city, county, tribal, and state officials; elected officials; and members of the public who requested to be added to the mailing list. The public meeting announcement and social media posts were sent to those on the mailing list through email. A radio ad was sent to four radio stations, including KHOB (1390 AM), KYFO (95.5 FM), KCRS (550 AM), and KMTH (98.7 FM). Considering the rural nature of the study corridor, portable message board signs with information on how to find the meeting notice were placed at strategic locations alongside the corridor. Lastly, notification of the public meeting announcement was posted on the New Mexico Department of Transportation (NMDOT) Projects Website, the NMDOT's project-specific website, NMDOT social media outlets, and distributed through the NMDOT Public Information Officer (PIO), as well as shared with the Texas Department of Transportation (TxDOT) for distribution through their channels.

To provide notice of the September 14 Jal-specific public meeting, United States Postal Service Every Door Direct Mailers (EDDM) were sent to Jal residents in the immediate vicinity of the project area (a total of 960). An advertisement was published in the Jal Record newspaper (Appendix A). A portable message board sign was placed at a strategic location in Jal. Lastly, notification of the public meeting announcement was posted on the NMDOT Projects Website, project-specific website, social media outlets, and distributed through the PIO and a targeted mailing list. Jal leadership distributed the advertisement to their business community and residents through their channels. A copy of each of the notifications is located in **Appendix A**. Following the event, the Carlsbad Argus newspaper published an article about the meeting and encouraged the public to provide comments.

Both virtual public meetings included a PowerPoint presentation and a live question-and-answer interaction between the Project Team and participating public. Based on a request from the City of Jal, the project team offered live Spanish translation through the Zoom platform during the September 14 meeting event. Each meeting was recorded in English, and a video of the meeting was posted to the NMDOT's YouTube website to allow those who were not able to attend to watch the presentation and provide feedback. The September 14 meeting was also recorded in Spanish and made available on the NMDOT's YouTube website. The August 30 meeting presentation began with introductions, and then the Project Team discussed project location, project development process, activities completed, key objectives of the project, bridge and project design, and schedule. The September 14 meeting presentation followed a similar format but focused on the Jal-specific elements of the project. A copy of the PowerPoint presentation slide decks are located in **Appendix B**.

For the first public meeting, 41 people registered ahead of time for the event. On the day of the August 30 event, a total of 63 people attended. The average duration of attendance was 53 minutes. The video of the meeting posted to the NMDOT YouTube channel following the meeting garnered 34 views for the general public meeting and 3 views for the City of Jal public meeting. The Jal-specific public meeting

had 22 people registered ahead of the event and a total of 43 people attended. A list of the participants is included in **Appendix C**.

During the August 31 public meeting event, the Project Team received 9 questions and comments. During the September 14 meeting, the team received 7 comments. Attendees engaged in active discussion and Q&A for the scheduled duration of both meetings. Additionally, 13 emails and 3 phone calls were received.

3 PUBLIC COMMENTS SUMMARY

Comments received from all platforms were combined and organized into general themes. Review and analysis of comments indicate that the public input received falls into the following themes: (1) construction and design, (2) funding, (3) public involvement process, (4) data requests, and (5) comments not related to this project. Comments received that fell outside of the project scope or location were shared with the pertinent land managing agency (e.g., City of Jal). The following summary of paraphrased cumulative comments is based on questions or comments received to date from the public. Copies of comments are included in **Appendix D**.

COMMENTS ON CONSTRUCTION AND DESIGN:

- Jal should have a four-lane roadway with a flush median due to heavy traffic. If a four-lane road is constructed, the relief route may not be needed.
- Will there be context sensitive solutions, bridge, or soundwall designs?
- There should not be a roundabout on NM 128. A roundabout would increase travel time, add a driving hazard, and increase congestion.
 - o A passing lane would be better suited, such as that on 285.
- Other than the RCUT, High-T, and RAB, what other options have been evaluated.
- The State of New Mexico should spend a little more money and include the four-lane option through Jal to the Texas State Line, since a lot of the State's income comes from this area.
- In the four-lane option, is it possible to construct two new lanes, leaving the other two lanes open during construction, and then returning to the older two lanes for rebuilding?
- What is a realistic timeline for the project to be completed?
- What is the benefit to traffic of widening the lanes on 128? Is it just to give space for oversized vehicles? How will widening the lanes improve traffic flow?
- Would it be better if the Northern Jal Relief Route were completed before widening 128 in Jal?
- Is the four-lane option going to be discussed or has the three-lane alternative been decided?

COMMENTS ON FUNDING:

- Is it true that in New Mexico, the design-build method may only be used on projects exceeding \$50 million? Are federal funding matching dollars considered part of this threshold cost?

- Is there any benefit to separating NM 31 from NM 128 in the construction phase for funding purposes?
- 1/3 of the State's funding comes from Lea and Eddy Counties, because of this more money should be spent on constructing the 4-lane option through Jal.

COMMENTS ON PUBLIC INVOLVEMENT PROCESSES:

- How do I register for the public meeting?
- Can I have a copy of the transcript of the public meeting?
- Will WSP provide the NM Transportation Commission the schedule of meetings planned with individual property owners within the City of Jal?
- Provide a recap of the property owner concerns.

COMMENTS NOT RELATED TO THIS PROJECT, OR OUTSIDE THE PROJECT SCOPE:

- The City of Jal should reconsider and place the 128 Northern Relief Route farther north than the planned relief route is, farther north there is only one homestead instead of 96.

DATA REQUESTS:

- Can you provide the same crash data for the 31 corridor that you provided for the 128 corridor?
- There is a RAB in Chapparal, NM at the 213 and 404 intersection. What is the size data of that RAB that is already in use? Also, the volume of traffic data, pre-installation crash data, and post-installation crash data.

Appendix A PUBLIC MEETING NOTICES

A.1 PUBLIC MEETING NUMBER 1, AUGUST 31, 2021

EMAIL NOTIFICATION

Reints, Rebecca

From: Reints, Rebecca
Sent: Tuesday, August 17, 2021 11:38 AM
Cc: Hyre, Jennifer; Ward, Terry L; Reints, Rebecca
Subject: NMDOT Public Meeting Announcement - NM 31-128 Project (CN 2104330)
Attachments: NM-31-128_Public-Meeting_Announcement.pdf; 3090036A-NMDOT-Public-Meeting-Twitter.jpg; 3090036A-NMDOT-Public-Meeting-Facebook.jpg

Good morning,

Please see the attached virtual public meeting notification for the NM 31-128 Roadway Project along NM 31 from US 285 to US 62 and along NM 128 from NM 31 to the NM/TX state line in Eddy and Lea Counties (CN 2104330). The meeting will take place on **Tuesday, August 31, 2021 from 6:00 to 7:30 p.m.** (Mountain Daylight Time). The public is encouraged to participate in the live video streaming using Zoom or by calling in at the scheduled meeting time. Please feel free to share the meeting announcement through your respective social media outlets. Text for posting to social media is included below. More information and registration details can be found on the NMDOT project webpage at: <https://nm31-128project.nmdotprojects.org/> or you can call into the meeting at the scheduled meeting time at: (346)-248-7799; WEBINER ID: 815 5112 8865.

We look forward to your participation! Please let me know if you have any questions.

For social media posts:

Virtual Public Meeting: The New Mexico Department of Transportation, in cooperation with the Federal Highway Administration, is in the project development stage for the NM 31-128 Roadway Project along NM 31 from US 285 to US 62 and along NM 128 from NM 31 to the NM/TX state line in Eddy and Lea counties. Community members are encouraged to register for the event and join the discussion, provide comments, and ask questions of the project team. The meeting will take place Tuesday, August 31, 2021 from 6 to 7:30 p.m. (Mountain Daylight Time). More information and registration at: <https://nm31-128project.nmdotprojects.org/> or you can call into the meeting at the scheduled meeting time at: (346)-248-7799; WEBINER ID: 815 5112 8865.



JOIN US!
NM 31-128 Project | CN 2104330
VIRTUAL PUBLIC MEETING
August 31, 2021 | 6:00-7:30pm (MDT)

The New Mexico Department of Transportation (NMDOT), in cooperation with the Federal Highway Administration, is in the project development stage for the NM 31-128 Project along NM 31 from US 285 to US 62 and on NM 128 from NM 31 to the NM/TX state line in Eddy and Lea counties. Community members are encouraged to register for the event and join the discussion, provide comments, and ask questions of the project team.

More information and registration at:
<https://nm31-128project.nmdotprojects.org>

OR Call-in at the scheduled meeting time: 346-248-7799;
WEBINAR ID: 815 5112 8865



SCAN ME

Comments can be provided at the meeting or sent by Sept. 30, 2021 to:

WSP USA c/o
Jennifer Hyre
Attn: NM 31-128
2440 Louisiana Blvd
NE, Suite 400
Albuquerque, NM
87110
Jennifer.Hyre@wsp.com
(505)-878-6577

To request ADA accommodations or a translator, contact Jennifer Hyre before 8/26/2021.



Rebecca Reints
Environmental Planner
ENV SP

T+ 1 505-395-2191

HOBBS SUN NEWSPAPER AD

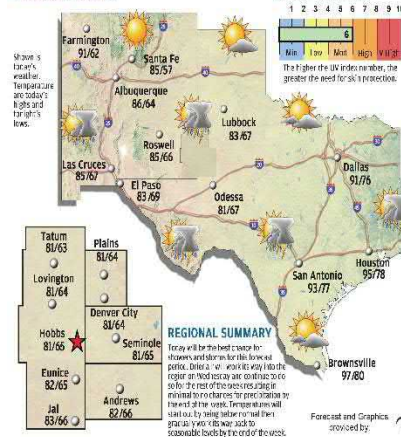
HOBBS NEWS-SUN • TUESDAY, AUGUST 17, 2021

WEATHER & RECORDS 6

FIVE-DAY FORECAST FOR HOBBS, NM

Today	Tonight	Wednesday	Thursday	Friday	Saturday
Chance of Scattered Showers/Storms. Winds S 5-11. HI 81 Falls Like 81	Po to the Clouds. Chance of Isolated Showers/Storms Early. Winds S 4-6. Lo 65 Falls Like 64	Misty Bury. Isolated Showers Possible PM. Winds S 4-13. HI 87 Lo 58 Falls Like 58	Partly Cloudy. Scattered Showers Possible PM. Winds S 7-17. HI 90 Lo 67 Falls Like 65	Partly Cloudy. Winds S 6-13. HI 91 Lo 66 Falls Like 69	Mostly Sunny. Winds S 6-14. HI 92 Lo 67 Falls Like 70

REGIONAL FORECAST



TODAY'S UV INDEX



LOCAL ALMANAC

Temperatures	81°
Yesterday's High	84°
Yesterday's Low	64°
Average High	82°
Average Low	65°
Record High	107° (2003)
Record Low	59° (1942)
Last Year's High	103°
Last Year's Low	71°

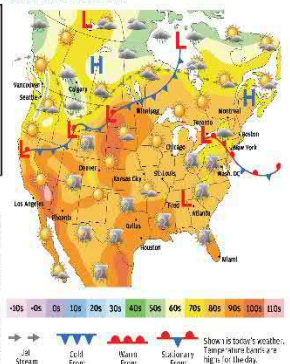
SUN & MOON

Full	Aug 30	First	Sept 13
Today	8:11 AM	8:58 PM	9:15 AM

POLLEN FORECAST

Tree	Grass	Weed	Mold
Low	Med	High	Low

TODAY'S NATIONAL MAP



National Extremes

Yesterday for the 48 contiguous states: Low: 3° Albany, Wyoming

TODAY'S NATIONAL CITIES FORECAST

City	HI	Lo	Weather
Albany	89	71	TSTRMS
Anchorage	55	40	RAIN
Atlanta	79	72	TSTRMS
Austin	92	76	TSTRMS
Baltimore	87	75	TSTRMS
Boston	85	68	WCLDY
Buffalo	80	65	TSTRMS
Calgary	85	76	TSTRMS
Chicago	84	79	PCLDY
Colorado	82	68	SHRWS
Denver	84	63	PCLDY
Des Moines	88	65	SHRWS
Detroit	83	68	TSTRMS
Flagstaff	77	54	TSTRMS
Houston	89	74	SHRWS
Los Angeles	82	63	TSTRMS
Los Angeles	82	63	PCLDY

Sheriff's reports

Lea County Sheriff's Office activity for 08-14-21
• 72 calls for service.
• Two accidents without injury. Alabama and State Line. Hobbs with injury. W. Kansas St. and N. World Dr. Hobbs.
• Three criminal incidents: mental 700 block Oak Ave., Lovington; off-duty theft 5, NM Hwy. 483 and W. Stiles Rd., Hobbs; motorist assist Hwy. 62-180, Hobbs.

Lea County Sheriff's Office activity for 08-15-21
• 77 calls for service.
• One accident without injury. Hwy. 62-180, Hobbs.
• One criminal incident: criminal sexual contact 200 block E. Green Acres Dr., Hobbs.

Arrests
• Nine arrests.
• 11 misdemeanors—two driving while under the influence of intoxicating liquor; failure to pay; failure to appear; two detos; two aggravated DWI; speeding; display of plates; probation violation; two felonies.

Felony arrests:
• Eugene Ortega, 50, of Lovington, was arrested on Aug. 13 for seven warrants for false imprisonment, embezzlement of a motor vehicle, two counts of larceny over \$500 under \$2,500, all fourth-degree felonies; battery against a household member, criminal trespass and failure to appear, all misdemeanors.
• Steven Nave, 38, of Lovington, was arrested on Aug. 12 and charged with murder, a first-degree felony; tampering with evidence; bribery or intimidation of a witness, both third-degree felonies; possession of a firearm by a felon, a fourth-degree felony.

Fire reports
Hobbs Fire Department activity for 08-14-21
• 27 calls for service.
• One fire incident: structure fire 200 block E. Castle Ave.
• 23 ambulance runs.
• Four non-emergency transport

Hobbs Fire Department activity for 08-14-21
• 27 calls for service.
• One fire incident: structure fire 200 block E. Castle Ave.
• 23 ambulance runs.
• Four non-emergency transport

Better Call Chris! CHRISTOPHER J. MILLS
ATTORNEY AT LAW
FREE CONSULTATION
SERVING THE COMMUNITY
978.307.7950

activity for 08-15-21
• 26 calls for service.
• One fire incident: commercial fire 400 block S. Dal Paso St.
• 23 ambulance runs.
• Five non-emergency transports

Lovington Fire Department activity for 08-14-21
• Three calls for service.
• No fire incidents.
• Three ambulance runs.

Knowles Fire Department activity for 08-14-21
• One call for service.
• No fire incidents.
• One ambulance run.

Police reports
Hobbs Police Department activity for 08-14-21
• 135 calls for service.
• Three accidents without injury. L. Bender Blvd. and N. Dal Paso St.; without injury 1800 block W. Joe Harvey Blvd.; without injury 1600 block W. Camino del Arco.

Hobbs Police Department activity for 08-15-21
• 115 calls for service.
• Six accidents: without injury 2200 block N. Grimes St.; without injury N. Dal Paso St. and F. Bender Blvd.; without injury W. Joe Harvey Blvd. and N. Lovington Hwy.; without injury 1000 block E. Cold Ave.; without injury E. Bender Blvd. and N. Dal Paso St.; without injury 2800 block N. Dal Paso St.

SEPTEMBER 9-19, 2021
YOUR HOUSE COULD USE A BREAK. GET BACK TO THE FAIR!
Get your tickets at EXPONM.com!

• 18 criminal incidents: aggravated battery 2400 block N. Lovington Hwy.; unconscious 700 block F. Clearfork Dr.; domestic 1200 block S. Parkway Dr.; unwanted subject 1200 block F. White St.; warrant service 1300 block E. Marland St.; suspicious 400 block S. Fourth St.; larceny 1500 block F. Schanbauer St.; residential burglary 600 block S. Eighth St.; warrant service 2400 block N. Jefferson St.; domestic 900 block W. Superior Cr.; domestic 800 block N. Thorp St.; trouble with subject 1200 block W. Clinton St.; warrant service S. Elm St. and E. Marland St.; shoplifting 3000 block N. Grimes St.; auto burglary 300 block F. White St.; auto burglary 200 block S. Linum St.; warrant service 4300 block N. Grimes St.; theft 2400 block N. Jefferson St.

Arrests
• No arrests.
• No misdemeanors. No felonies.

Lovington Police Department activity for 08-14-21 through 08-15-21
• 45 calls for service.
• No accidents.
• Five criminal incidents: larceny 600 block S. Main St.; domestic 1000 block S. 4th St.; trouble with subject 200 block W. Ave. C; trouble with subject 1100 block S. Love St.; domestic 400 block W. Tyler Ave.

Correction policy
The News-Sun is committed to accuracy in its news reports. Although numerous safeguards are in place to ensure accurate reporting, mistakes may occur. Confirmed factual errors will be corrected in this space daily. If you find a mistake, call 978-5455.

Welfare check E. Navajo Dr. and N. Dal Paso St.; warrant service 2400 block N. Jefferson St.; larceny 1200 block E. Bender Blvd.; found property 1400 block N. Turner St.; larceny 900 block W. Broadway St.; warrant service 600 block E. Humble St.; domestic 3800 block N. Lovington Hwy.; larceny 2700 block W. Zenith Dr.

Welfare check E. Navajo Dr. and N. Dal Paso St.; warrant service 2400 block N. Jefferson St.; larceny 1200 block E. Bender Blvd.; found property 1400 block N. Turner St.; larceny 900 block W. Broadway St.; warrant service 600 block E. Humble St.; domestic 3800 block N. Lovington Hwy.; larceny 2700 block W. Zenith Dr.

Biden says he stands 'squarely behind' Afghanistan decision

WASHINGTON (AP) — President Joe Biden said Monday that he stands "squarely behind" his decision to withdraw U.S. troops from Afghanistan as he acknowledged the "gut wrenching" images coming out of the country after the swift Taliban takeover of the government.

Biden said he had to choose between sticking to a previously negotiated agreement to withdraw U.S. troops from Afghanistan or sending thousands more service members back into Afghanistan to fight a "third decade" of war.

Biden, sounding resolute in the face of whiplash criticism of his handling of the situation, said he chose the latter so as not to repeat past mistakes. He reiterated that he had no regrets.

"I stand squarely behind my decision," the president told the nation in a televised address from the White House East Room after he flew back from the Camp David presidential retreat.

"After 20 years, I've learned the hard way that there was never a good time to withdraw U.S. forces."

Many disagree with Biden's decision, angered by the chaos the world witnessed over the weekend as the Taliban ultimately captured Kabul, the capital, and Afghanistan's president left the country.

Biden said he'd rather take the criticism over the fallout than pass the decision of how and when to withdraw to a fifth U.S. president. He said the decision to leave Afghanistan is "the right one for America" because keeping a U.S. presence there was no longer a U.S. national security interest.

Biden described the images coming out of Afghanistan, especially at the airport in Kabul, where Afghans descended in hopes of fleeing the country — as "gut wrenching." Video of Afghans clinging to a U.S. Air Force plane and running alongside it as prepared to take off had circulated widely on the internet.



JOIN US!
NM 31-128 Project | CN 2104330
VIRTUAL PUBLIC MEETING
Tues. August 31, 2021 6:00-7:30pm (MDT)
The New Mexico Department of Transportation (NMOT), in cooperation with the Federal Highway Administration, is in the project development stage for the NM 31-128 Project along NM 31 from US 285 to US 62 and on NM 128 from NM 31 to the NM/TX state line in Eddy and Lea counties. Community members are encouraged to register for the event and join the discussion, provide comments, and ask questions at the project team.

More information and registration at: <https://nm31-128project.mdotnmdot.org>
OR Call in at the scheduled meeting time: 946 440 7799, WEBINAR ID: 915 5112 0865

Comments can be provided at the meeting or sent by September 30, 2021 to: WSP USA c/o Jennifer Hyre Attn: NM 31-128 2440 Louisiana Blvd NE Suite 400 Albuquerque, NM 87110 Jennifer.hyre@wsp.com (505) 876-6577

To request ADA accommodations or a translator, contact Jennifer Hyre before August 26, 2021.

PORTABLE MESSAGE BOAD SIGNS





RADIO PUBLIC SERVICE ANNOUNCEMENT

WHO: New Mexico Department of Transportation

WHAT: NM 31-128 Project

WHEN: Tuesday, August 31, 2021 from 6 to 7:30 p.m. Mountain Daylight Time

WHERE:

<https://nm31-128project.nmdotprojects.org/> to register

Or call 505-878-6577 ahead of time for telephone access to the meeting

Script:

The New Mexico Department of Transportation in cooperation with the Federal Highway Administration is in the project development stage for the NM 31-128 Project in Eddy and Lea counties. A virtual public meeting will be hosted on Tuesday, August 31, 2021 starting at 6:00 p.m. Mountain Daylight Time. The purpose of this meeting is to share information with the public and answer questions the public may have about project. Please join the live discussion via Zoom or by telephone to provide your comments and ask questions of the study team. Members of the community are encouraged to register for the event.

Register online at: <https://nm31-128project.nmdotprojects.org/>

One more time that is, N-M-3-1-hyphen-1-2-8-project-dot-N-M-D-O-T-projects-dot-o-r-g.

Or call 505-878-6577 ahead of time for the meeting's telephone access information.

SOCIAL MEDIA POSTS - FACEBOOK

A Facebook post for the NM 31-128 Project. The background is a black and white aerial photograph of a multi-lane highway under construction in a desert environment. On the left side, there is a logo for 'NM 31-128' with a stylized American flag. The text on the right side of the post is white and yellow. A red button at the bottom right says 'SIGN UP NOW!'.

NM 31-128 Project | CN 2104330

**JOIN US FOR A LIVE
VIRTUAL PUBLIC
MEETING**

Tuesday
August 31, 2021
6:00-7:30pm
(MDT)

SIGN UP NOW!

A Facebook post for the NM 31-128 Project. The background is a black and white aerial photograph of a multi-lane highway under construction in a desert environment. On the left side, there is a logo for 'NM 31-128' with a stylized American flag. The text on the right side of the post is white and yellow. A black button at the bottom right says 'LIVE NOW!'. At the very bottom, there is yellow text providing a phone number and a webinar ID.

NM 31-128 Project | CN 2104330

**JOIN US FOR A LIVE
VIRTUAL PUBLIC
MEETING**

Tuesday
August 31, 2021
6:00-7:30pm
(MDT)

LIVE NOW!

CALL NOW: 346-248-7799
WEBINAR ID: 815 5112 8865



SOCIAL MEDIA POSTS - TWITTER





NM 31-128

NM 31-128 Project | CN 2104330

JOIN US FOR A LIVE VIRTUAL PUBLIC MEETING

Tuesday, August 31, 2021
6:00-7:30pm (MDT)

LIVE NOW!

CALL NOW: 346-248-7799
WEBINAR ID: 815 5112 8865

NM 31-128 Project | CN 2104330

JOIN US FOR A LIVE VIRTUAL PUBLIC MEETING

Tuesday August 31, 2021
6:00-7:30pm (MDT)

SIGN UP NOW!



NM 31-128

CARLSBAD CURRENT NEWS ARTICLE

1/3/22, 4:00 PM

\$80M Eddy County road project still in design mode

Carlsbad Current Argus.

NEWS

Impending \$80M Eddy County road project still in design stage

Mike Smith Carlsbad Current-Argus

Published 2:57 p.m. MT Sept. 1, 2021

Design plans for safety improvements on two busy state highways running through Eddy County continued, officials said.

Engineering, environmental, right-of-way and utilities development plans for the New Mexico 128 and New Mexico 31 road project south of Carlsbad were forecasted to last through March 2022, the New Mexico Department of Transportation (NMDOT) website indicated.

Requests for work contractors were slated for August 2022 and phase one work is scheduled to start late next year, read NMDOT's website.

Terry Ward, project manager with WSP Engineering in Albuquerque, said estimated cost on phase one ranged from \$70 to \$80 million and was fully funded.

"Both New Mexico 31 and New Mexico 128 traverse Bureau of Land Management (BLM), State Land Office, and private lands, mainly serving the oil and gas industry," read the NMDOT's website dedicated to the project.

NMDOT selected the first phase of improvements to be delivered using the Design-Build procurement methodology, per the website.

"This provides maximum funding flexibility for NMDOT and its partners and allows NMDOT to aggressively move towards starting construction of the improvements sooner," the website stated.

1/3/22, 4:00 PM

\$80M Eddy County road project still in design mode

“Both roadways are part of a major transportation network,” she said.

Hyre said both highways were classified as “major collectors” since both connect communities with populations over 5,000.

Data gathering indicated both highways need pavement improvements, additional lanes, shoulders, passing lanes and drainage improvements, the NMDOT website said.

Ward cited the number of traffic crashes occurring on both roadways from 2015-2019.

He said 169 crashes were noted on New Mexico 31 along with three traffic deaths.

More: Eddy County approves \$300K agreement with State for future road projects

“We found that the New Mexico 31-128 intersection (near Loving) had a crash rate four-and-a-half times higher than the adjacent highway segments,” he said.

During the same time period on New Mexico 128 there were 553 crashes were reported along with 24 traffic deaths, Ward said.

He said traffic along the highway corridor was anticipated to grow from 2019 to 2041.

NMDOT District 2 Engineer Francisco Sanchez from Roswell said his agency and WSP teamed up for an online meeting Aug. 31 to address safety concerns and congestion issues.

He said both roads were, “heavily tied to important industries,” in Eddy and Lea counties.

Mike Smith can be reached at 575-628-5546 or by email at MSmith@currentargus.com or @ArgusMichae on Twitter.

A.2 PUBLIC MEETING NUMBER 2, SEPTEMBER 14, 2021

EMAIL NOTIFICATION

Reints, Rebecca

From: Reints, Rebecca
Sent: Wednesday, September 1, 2021 8:32 AM
Cc: Hyre, Jennifer; Ward, Terry L.
Subject: NMDOT Public Meeting Announcement - NM 31-128 Project for Jal, NM (CN 2104330)
Attachments: NM-31-128_Public-Meeting_Announcement.pdf; 3090036A-NMDOT-JAL-Public-Meeting-Facebook1.jpg; 3090036A-NMDOT-JAL-Public-Meeting-Twitter1.jpg

Good morning,

Please see the attached virtual public meeting notification for the NM 31-128 Roadway Project along NM 31 from US 285 to US 62 and along NM 128 from NM 31 to the NM/TX state line in Eddy and Lea Counties (CN 2104330). This meeting will focus on potential improvements in Jal. The meeting will take place on **Tuesday, September 14th, 2021 from 6:00 to 7:30 p.m.** (Mountain Daylight Time). Members of the Jal community are encouraged to participate in the live video streaming using Zoom or by calling in at the scheduled meeting time. Please feel free to share the meeting announcement through your respective social media outlets and other preferred communication platforms. More information and registration details can be found on the NMDOT project webpage at: <https://nm31-128project.nmdotprojects.org/> or you can call into the meeting at the scheduled meeting time at: (346)-248-7799; WEBINER ID: 845 8940 6115.

We look forward to your participation! Please let me know if you have any questions.



New Mexico DEPARTMENT OF
TRANSPORTATION
MOBILITY FOR EVERYONE

JOIN US!

NM 31-128 Project | CN 2104330

VIRTUAL PUBLIC MEETING

Sept. 14, 2021 | 6:00-7:30pm (MDT)

The New Mexico Department of Transportation (NMDOT), in cooperation with the Federal Highway Administration, is in the project development stage for the NM 31-128 Project along NM 31 from US 285 to US 62 and on NM 128 from NM 31 to the NM/TX state line in Eddy and Lea counties. Members of the Jai community are encouraged to register for the event to learn more about the potential improvements in Jai, provide comments, and ask questions of the project team.

More information and registration at:
<https://nm31-128project.nmdotprojects.org>

OR Call-In at the scheduled meeting time:
346-248-7799; WEBINAR ID: 845 8940 6115



Comments can be provided at the meeting or sent by October 15, 2021 to:

WSP USA c/o
Jennifer Hyre
Attn: NM 31-128
2440 Louisiana Blvd NE,
Suite 400
Albuquerque, NM 87110
Jennifer.Hyre@wsp.com
505-878-6577

To request ADA accommodations or a translator, contact Jennifer Hyre before September 9, 2021.



Rebecca Reints

Environmental Planner
ENV SP

T+ 1 505-395-2191

WSP USA Inc.
2440 Louisiana Blvd NE, Suite 400
Albuquerque, NM 87110

wsp.com

POSTCARD / EVERY DOOR DIRECT MAILER



NM 31-128 Project | CN 2104330

VIRTUAL PUBLIC MEETING

Sept. 14, 2021 | 6:00-7:30pm (MDT)

The New Mexico Department of Transportation (NMDOT), in cooperation with the Federal Highway Administration, is in the project development stage for the NM 31-128 Project in Eddy and Lea Counties.

Initial evaluations of NM 128 in Jal determined the highway should be widened and traffic signals installed at the NM 18 and 3rd Street intersections. This meeting does not include the Jal Relief Route effort.

NMDOT invites the community of Jal to attend the virtual public meeting where we will introduce the project and potential improvements specific to Jal, present existing conditions, present preliminary proposed alternatives and welcome public input.

JOIN US!

NM 31-128 Project

VIRTUAL PUBLIC MEETING

September 14, 2021 | 6:00-7:30pm (MDT)



New Mexico DEPARTMENT OF
TRANSPORTATION
MOBILITY FOR EVERYONE



U.S. Department of Transportation
Federal Highway Administration

PSRT STD
ECRWSS
U.S. POSTAGE
PAID
PERMIT #XXXX
SANTA FE, NM

*****ECRWSSDDM*****

Postal Customer

NMDOT will use Zoom, a web-based service with call-in capabilities to host the virtual public meeting. Members of the Jal community are encouraged to register for the event and join the discussion, provide comments and ask questions of the project team.

Register at: <https://nm31-128project.nmdotprojects.org/>

OR Call-in at the scheduled meeting time: 346-248-7799; ID: 845 8940 6115

Comments can be provided at the meeting or sent by October 15, 2021 to:

WSP USA c/o Jennifer Hyre Attn: NM 31-128
2440 Louisiana Blvd NE, Suite 400
Albuquerque, NM 87110
Jennifer.Hyre@wsp.com | 505-878-6577

To request ADA accommodations or a translator, contact Jennifer Hyre before September 9, 2021.

NM 31-128 Project

Legend

- Project Area
- NM Highway
- US Highway
- River
- City Boundary
- County

The NM 31 portion of the project extends 22 miles from its junction with US 285 to US 62. The NM 128 extends 60 miles from NM 31 through the City of Jal to the Texas state line.

Both roadways are part of a major supply route network for local oil and gas production/exploration operations within southeastern New Mexico.



NEWSPAPER NOTICE FOR THE JAL RECORD



JOIN US!

NM 31-128 Project | CN 2104330

VIRTUAL PUBLIC MEETING

Sept. 14, 2021 | **6:00-7:30pm** (MDT)

The New Mexico Department of Transportation (NMDOT), in cooperation with the Federal Highway Administration, is in the project development stage for the NM 31-128 Project along NM 31 from US 285 to US 62 and on NM 128 from NM 31 to the NM/TX state line in Eddy and Lea counties. Members of the Jal community are encouraged to register for the event and join the discussion, provide comments, and ask questions of the project team.

More information and registration at:

<https://nm31-128project.nmdotprojects.org>

OR Call-in at the scheduled meeting time:
346-248-7799; WEBINAR ID: 845 8940 6115

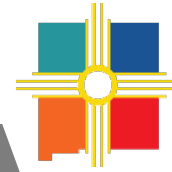
Comments can be provided at the meeting or sent by October 15, 2021 to:

WSP USA c/o
Jennifer Hyre
Attn: NM 31-128
2440 Louisiana Blvd NE,
Suite 400
Albuquerque, NM 87110
Jennifer.Hyre@wsp.com
505-878-6577

To request ADA accommodations or a translator, contact Jennifer Hyre before September 9, 2021.

Appendix B POWERPOINT PRESENTATIONS

Public Meeting Number 1, August 31, 2021



New Mexico DEPARTMENT OF
TRANSPORTATION
MOBILITY FOR EVERYONE



Virtual Public Information Meeting

NM 31-128 Alignment Study and Design-Build Project CN 2104330

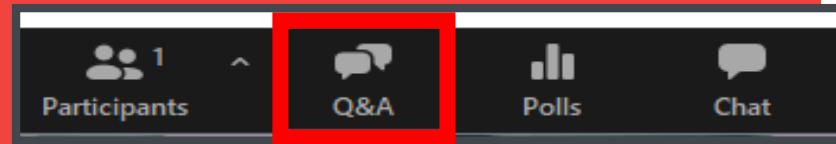
August 31, 2021



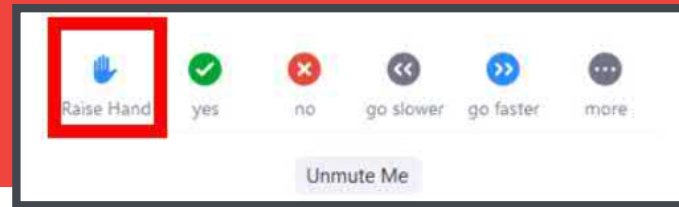
Meeting Platform: Zoom



- Zoom Webinar – only presenters will be on video
- This meeting is being recorded
- Questions & Answers – Please add project-related questions in the Q&A dialogue box



- During Q&A, if you would like to speak, raise your hand (*9 if you have dialed-in)



Presenters

▲ New Mexico Department of Transportation (NMDOT) Team Presenters:

- **Francisco Sanchez**, NMDOT District 2 District Engineer
- **Michael Smelker**, NMDOT Project Development Engineer
- **Terry Ward**, WSP Project Manager
- **Jennifer Hyre**, WSP Environmental Planner



Agenda



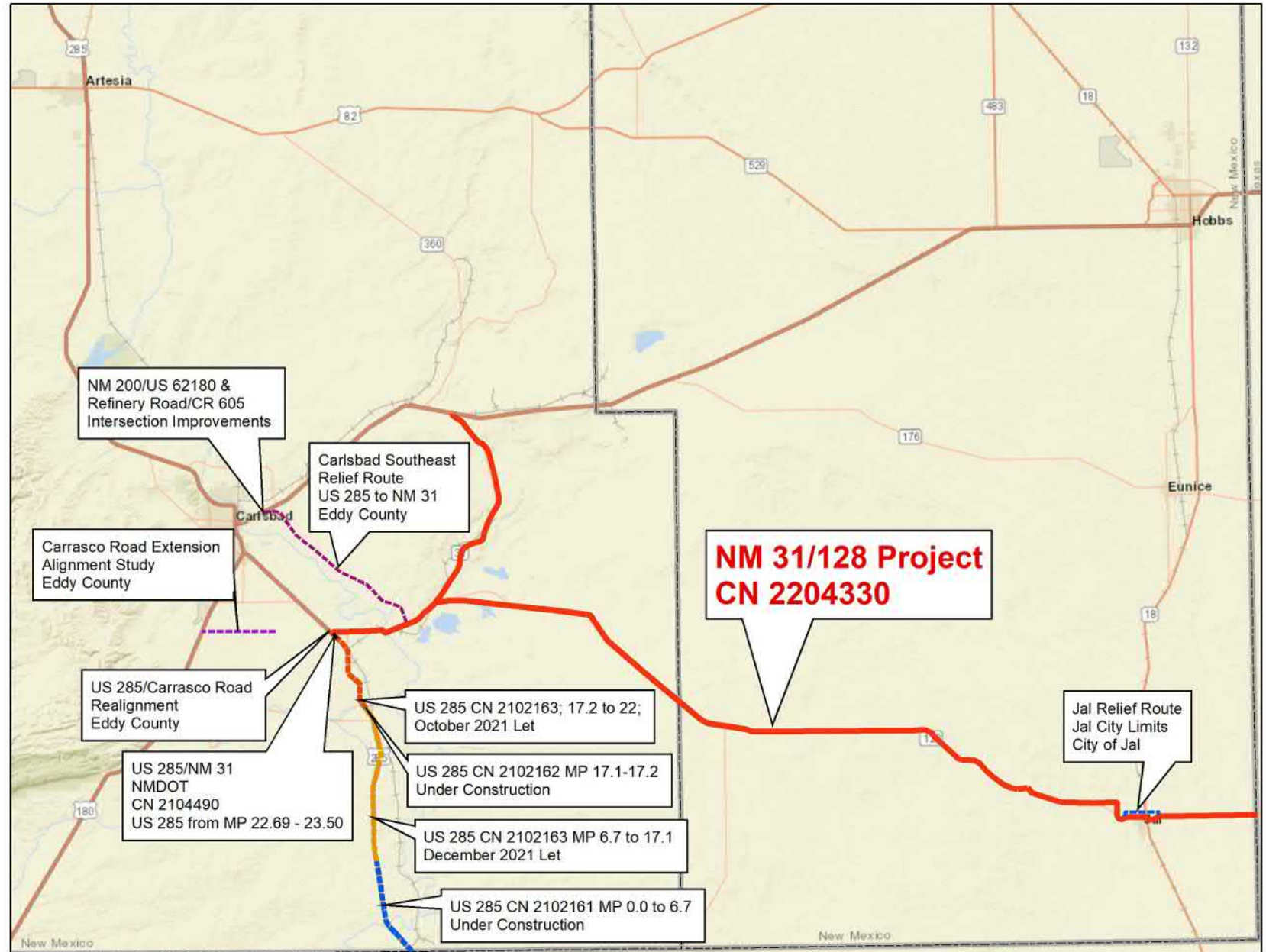
▲ Presentation Topics:

1. Project Background and Purpose & Need
2. Existing Conditions and Project Context
3. NMDOT Project Development Process
4. Preliminary Alternatives
5. Comparative Analysis and Key Findings
6. Design-Build Procurement – Phase I and Project Phasing
7. Schedule and Next Steps

▲ Questions

Numerous Active Projects in SE NM

Tonight we're here
to talk about the
NMDOT NM 31-128
Project





Project Background and Purpose & Need

NM 31 Background

- ▲ **NM 31**, also known at the **Potash Mines Road**, is a rural two-lane north-south roadway connecting US 285, also known as the **Pecos Highway**, to US 62, also known as the **Hobbs Highway**, just east of Carlsbad – a distance of approximately **22.7 miles**.



NM 128 Background

- ▲ **NM 128**, also known as the **Jal Highway**, is a rural two-lane east-west roadway connecting **NM 31** to Texas with an urban section through Jal, also known as Kansas Avenue – a distance of approximately **59.9 miles**.



NM 31-128

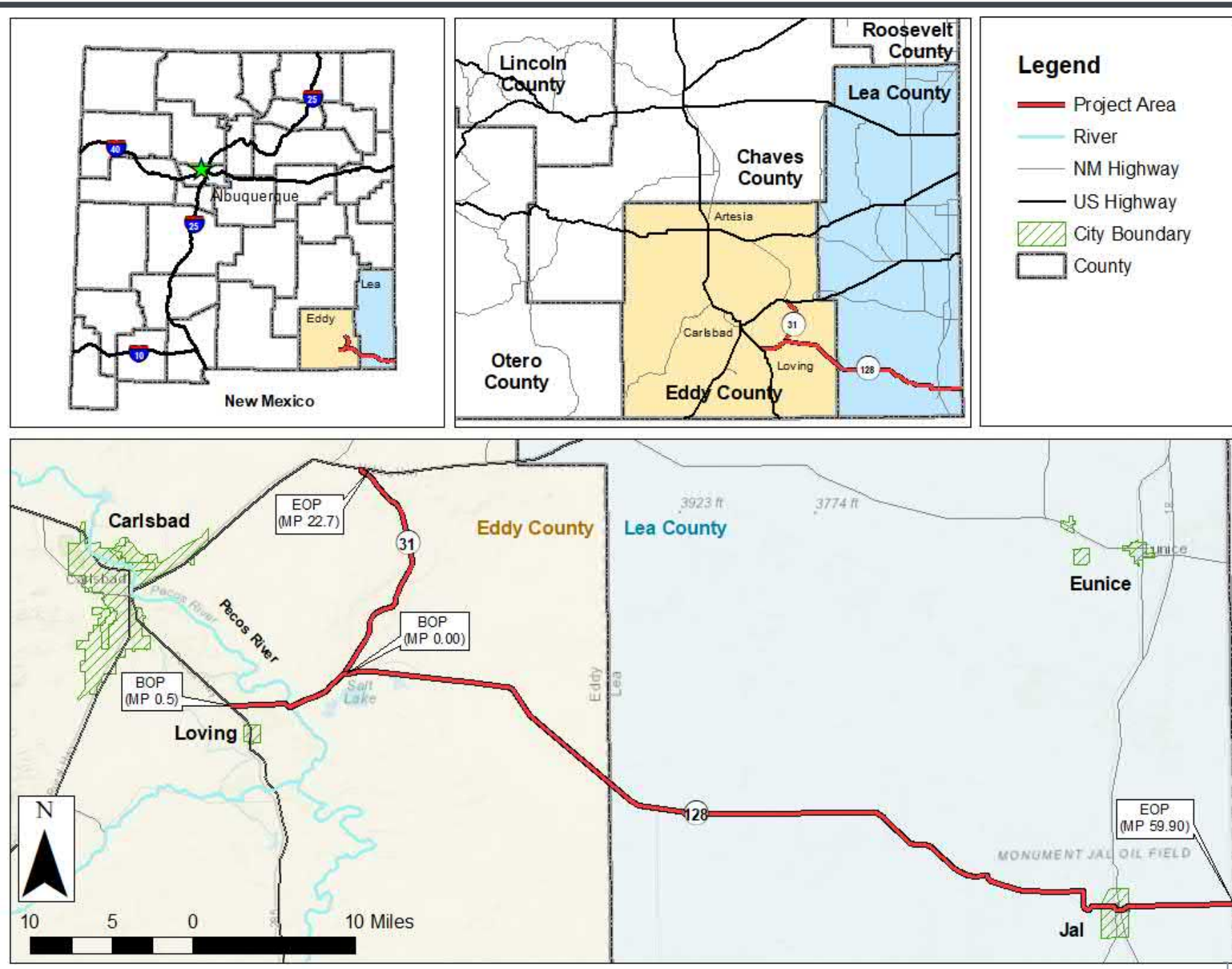
Background



- Both roadways pass through largely unpopulated semi-arid lands but are part of a major supply route network for local oil and gas production/exploration operations within southeastern New Mexico within Eddy and Lea counties.
- Both roadways are classified as **Major Collectors**, which connect urban areas with **populations over 5,000**, serve traffic generators typically of intra-county importance (ex. consolidated schools, employment centers, mines, regional parks), but may also cross county boundaries, and tend to collect traffic from local roads to rural minor arterials.

Location Map

NM 31 - 22.7 miles
NM 128 - 59.9 miles



Stakeholders

We've spoken with
all of them



- ▲ Eddy and Lea County
- ▲ City of Jal
- ▲ City of Carlsbad
- ▲ Bureau of Land Management (BLM)
- ▲ State Land Office (SLO)
- ▲ Oil & Gas Industry
- ▲ Waste Isolation Pilot Plant (WIPP)
- ▲ Mosaic and Intrepid Potash
- ▲ United Salt Corporation
- ▲ Burlington Northern RR
- ▲ Texas New Mexico RR
- ▲ TxDOT
- ▲ FHWA



INTREPID
Essential Minerals for Success



Project Website

- ▲ Project Information: <https://nm31-128project.nmdotprojects.org>
 - This presentation and recording of tonight's public event will be posted here



Project Purpose



- ▲ The project's purpose is **to improve NM 31 and NM 128 to mitigate problems with highway safety, traffic capacity and congestion, and condition of the roadway and related infrastructure**



Project Need

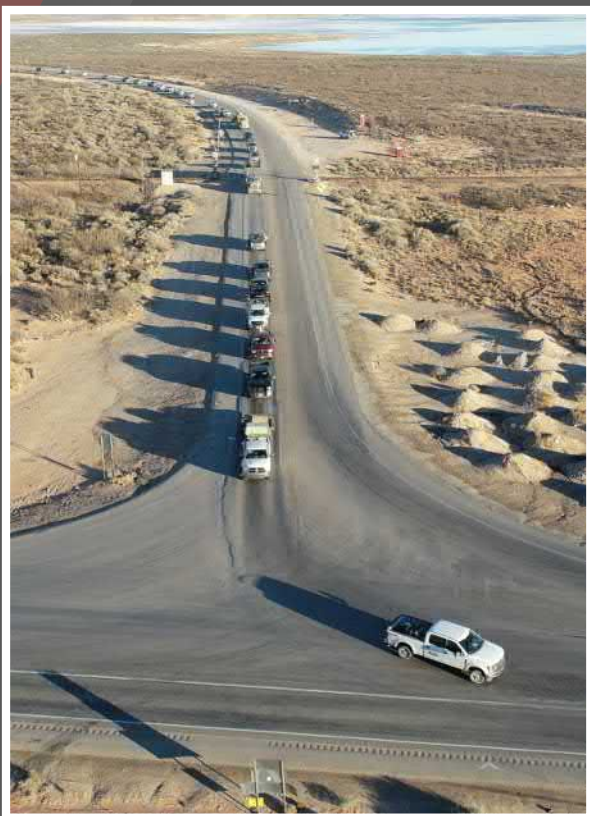


▲ Traffic Safety

» **722 crashes** occurred on NM 31 and NM 128 for the six-year period **between 2014 and 2019**

- **28%** of all crashes resulted in fatalities and injuries
- **27** fatal crashes occurred
- Primary crash types include **rear-end, head-on, over-turn, and right-angle crashes**

» Crash types are indicative of **inadequate safe passing areas, conflicts at intersections, lack of turn lanes, and narrow shoulders**



Project Need



▲ Traffic Capacity and Roadway Condition

- » Features of the existing highways and traffic flow contribute to safety and operational problems
 - Lack of turn lanes at intersections
 - Operational problems at railroad crossings
 - High truck percentage and vehicle platooning
 - Roadway geometry and cross section
 - Pavement condition



Existing Conditions and Project Context

Traffic and Safety

NM 31 Crashes

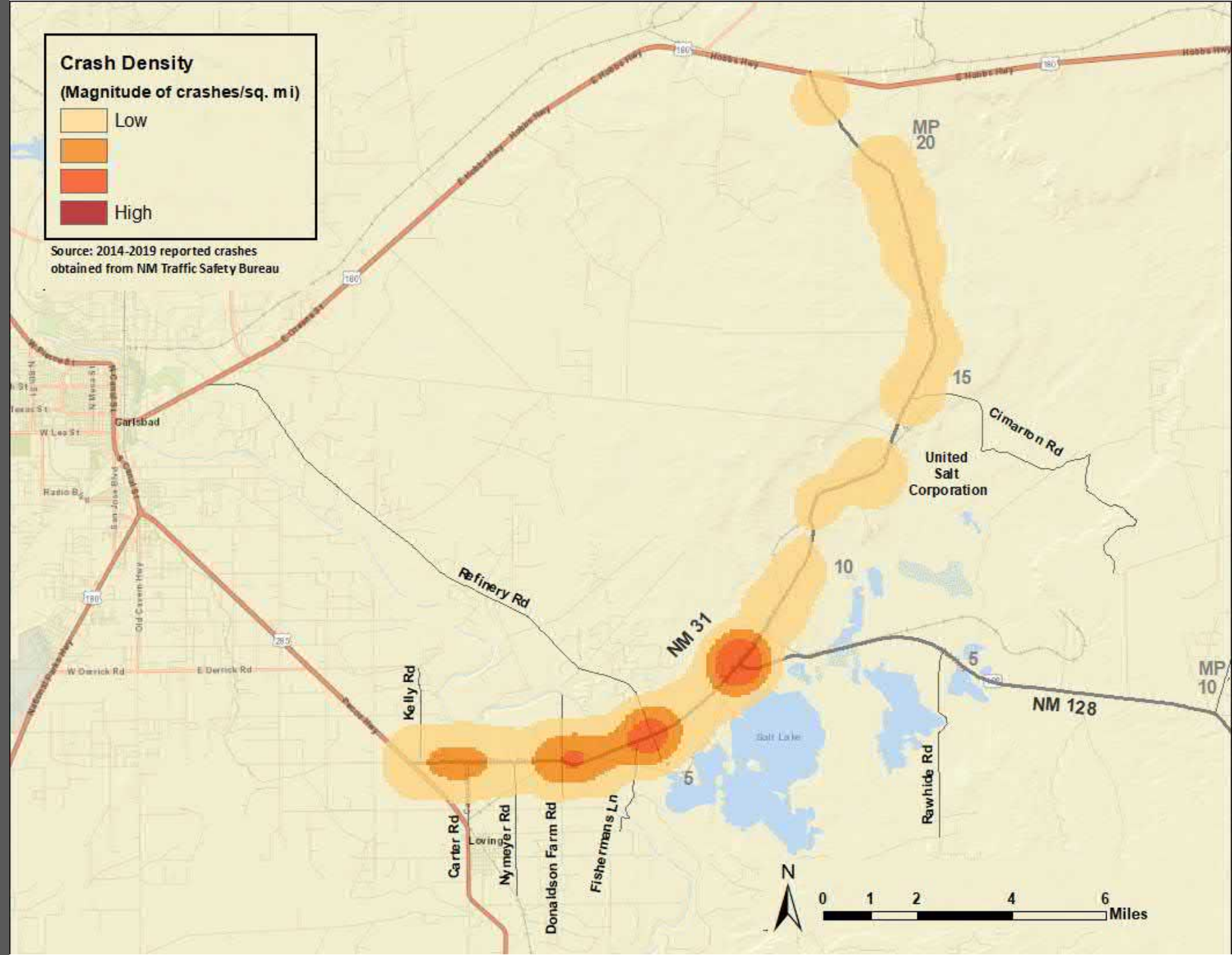
▲ NM 31 Crashes

- » NM 31 from 2014-2019, approximately **169** recorded crashes, including **3** fatalities
- » The NM 31/128 Intersection has a **crash rate 4.5 times higher** than the adjacent highway segments



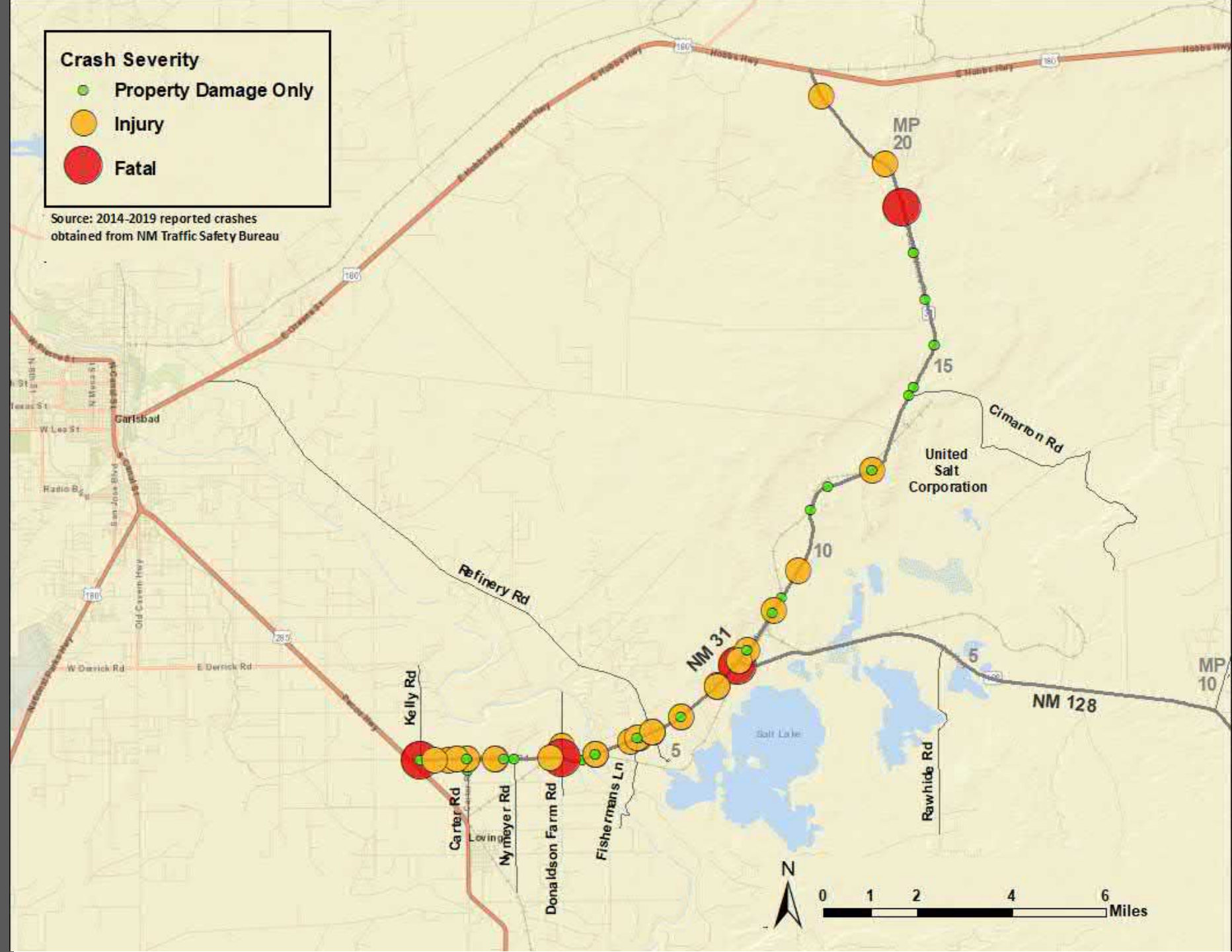
Traffic and Safety

NM 31 Crash Density



Traffic and Safety

NM 31 Crash Severity



Traffic and Safety

NM 128 Crashes

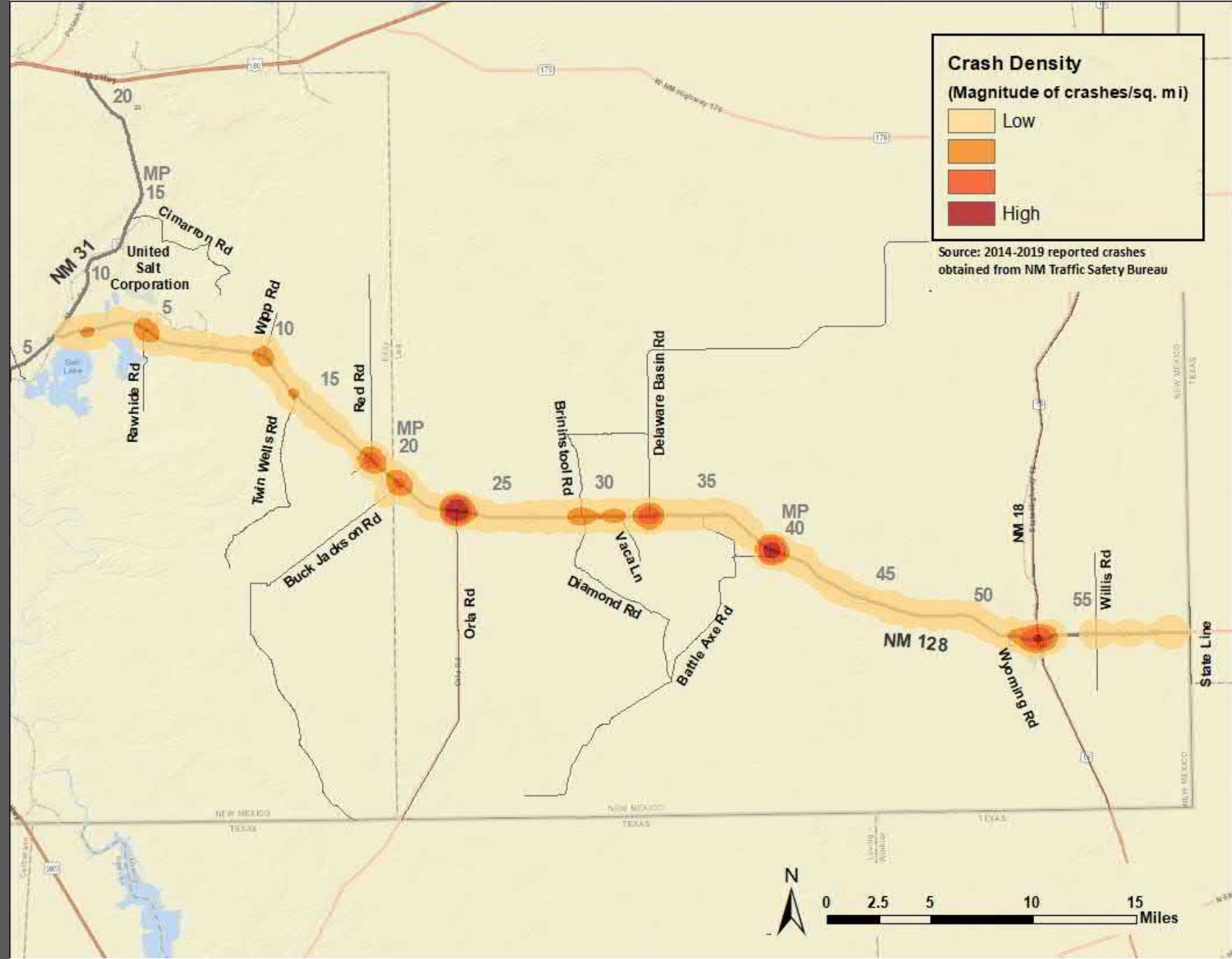
▲ NM 128 Crashes

- » NM 128 from 2014-2019, approximately **553** recorded crashes, including **24** fatalities.

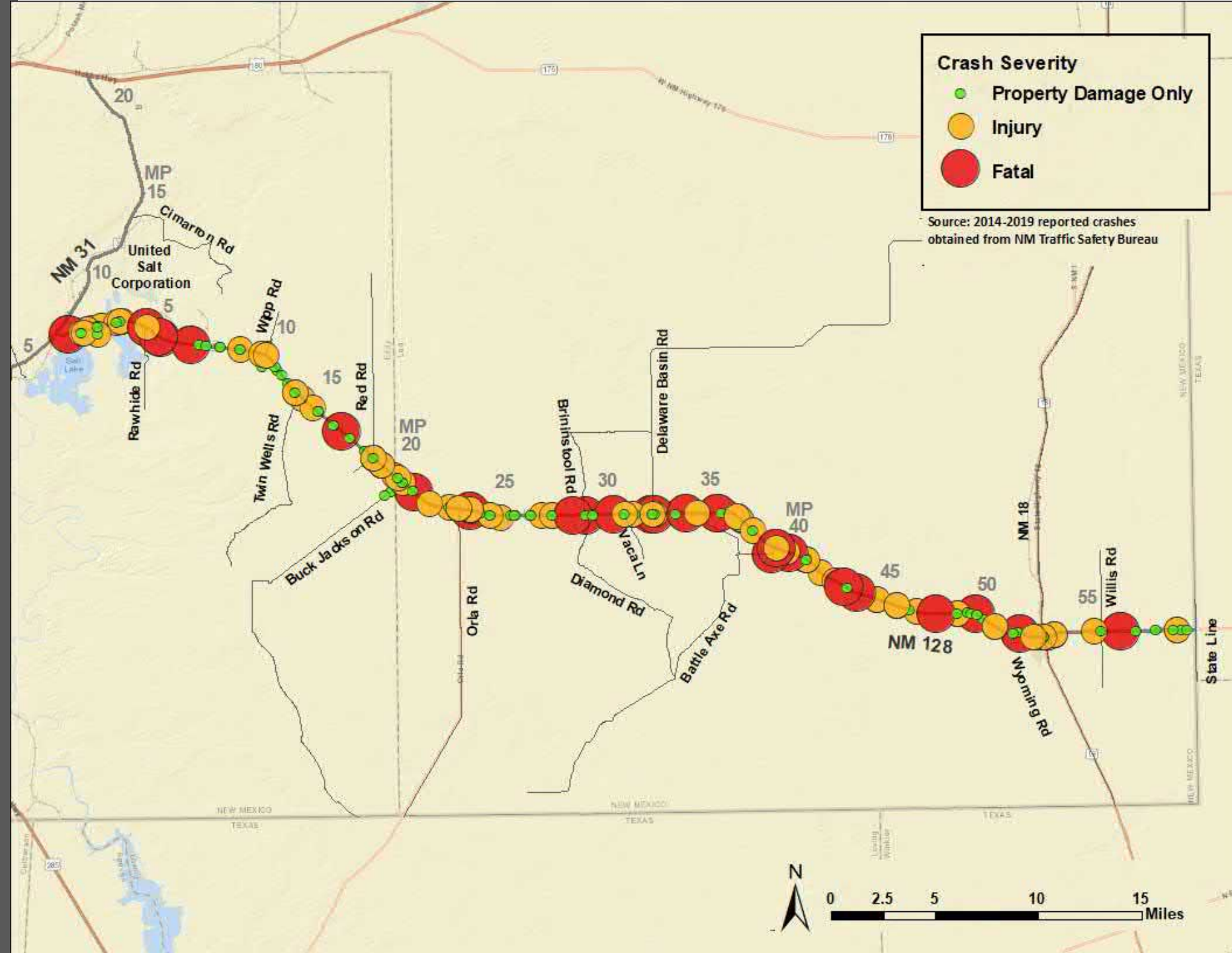


Traffic and Safety

NM 128 Crash Density



NM 128 Crash Severity



Traffic and Safety

NM 31 Average Daily Traffic and % Trucks

NM 31 Segment	Average Daily Traffic Volume (vehicles/day)	
	2019	2041
US 285 to Kelly Road	7,900	10,200
Kelly Road to Carter Road	7,900	10,700
Carter Road to Nymeyer Road	8,700	11,700
Nymeyer Road to Donaldson Farm Road	10,000	13,400
Donaldson Farm Road to Fishermans Lane	10,900	14,800
Fishermans Lane to US Refinery Road	10,500	14,000
US Refinery Road to NM 128	10,200	13,600
NM 128 to Salt Corp Site	3,200	4,200
Salt Corp Site to US 62	3,200	4,300

% of Trucks east of Refinery Road - **17%**
 % of Trucks west of Refinery Road - **14%**



Traffic and Safety

NM 128 Average Daily Traffic and % Trucks

NM 128 Segment	Average Daily Traffic Volume (vehicles/day)	
	2019	2041
MP 0.0 to WIPP Road	8,200	10,600
WIPP Road to Red Road	8,200	10,600
Red Road to Buck Jackson Road	8,200	10,600
Buck Jackson Road to Orla Road	8,200	11,500
Orla Road to Delaware Basin Road	9,200	12,000
Delaware Basin Road to Battle Axe Road	9,200	12,600
Battle Axe Road to 3rd St	10,400	14,000
3rd St to NM 18	9,400	12,600
NM 18 to Schooley Road	6,200	8,300
Schooley Road to Willis Road	6,200	8,300
Willis Road to NM/Texas Stateline	6,200	8,300

% Trucks generally range from **20-30%**



Project Traffic Delay



City of Jal
September 29, 2019 (Sunday) from 4:23 pm to 5:15 pm
Video



Pavement Conditions

▲ Deteriorated Pavement Conditions

- » Existing Pavements are generally in poor condition
- » Rehabilitation of some existing pavements
 - Preserve recent pavement investments to the extent possible
 - ✓ Predominately NM 128
- » Reconstruction in Jal
- » New pavements for 4-lane expansions and passing lanes
- » Consider trucks



Drainage Challenges

▲ Drainage Challenges

- » Plugged drainage structures
- » Corrosive soils
- » Jal floodplain areas
- » Pecos River bridge scour



NM 31 Drainage



▲ Drainage Challenges

- » NM 31 – **85** crossing drainage structures
 - Additional **10** turnout drainage structures
- » Many drainage structures filled-in
- » Corrosive soils and drainage structure conditions
 - From US 285 for the first 2 miles
 - Around NM 31/128 intersection (mileposts 7-8)
 - Mileposts 10-14
- » Pecos River bridge scour
 - Our river survey identified existing scour

NM 128 Drainage

▲ Drainage Challenges

- » NM 128 – **122** crossing drainage structures
 - Additional **60** turnout drainage structures
- » Plugged drainage structures
 - Approximately **101 of the 122** crossing structures have sedimentation
- » Corrosive soils and drainage structure conditions
 - First **12 miles** of NM 128, including the Salt Lakes
- » Jal floodplain areas



Access Management



▲ NM 31 Access Points

- » Approximately **94** turnout locations

▲ NM 128 Access Points

- » Approximately **308** turnout locations
- » Plus **30** turnouts to “frontage road”

▲ Potentially Remove NM 128 Frontage Road

▲ Priority Access Management Improvements



Utilities



▲ 109 Utility Companies

- » **45** on NM 31
- » **64** on NM 128

▲ Fastlines or Lay Flat lines

- » Ownership recently determined for all

▲ Considerable Effort Expended for Successful Delivery

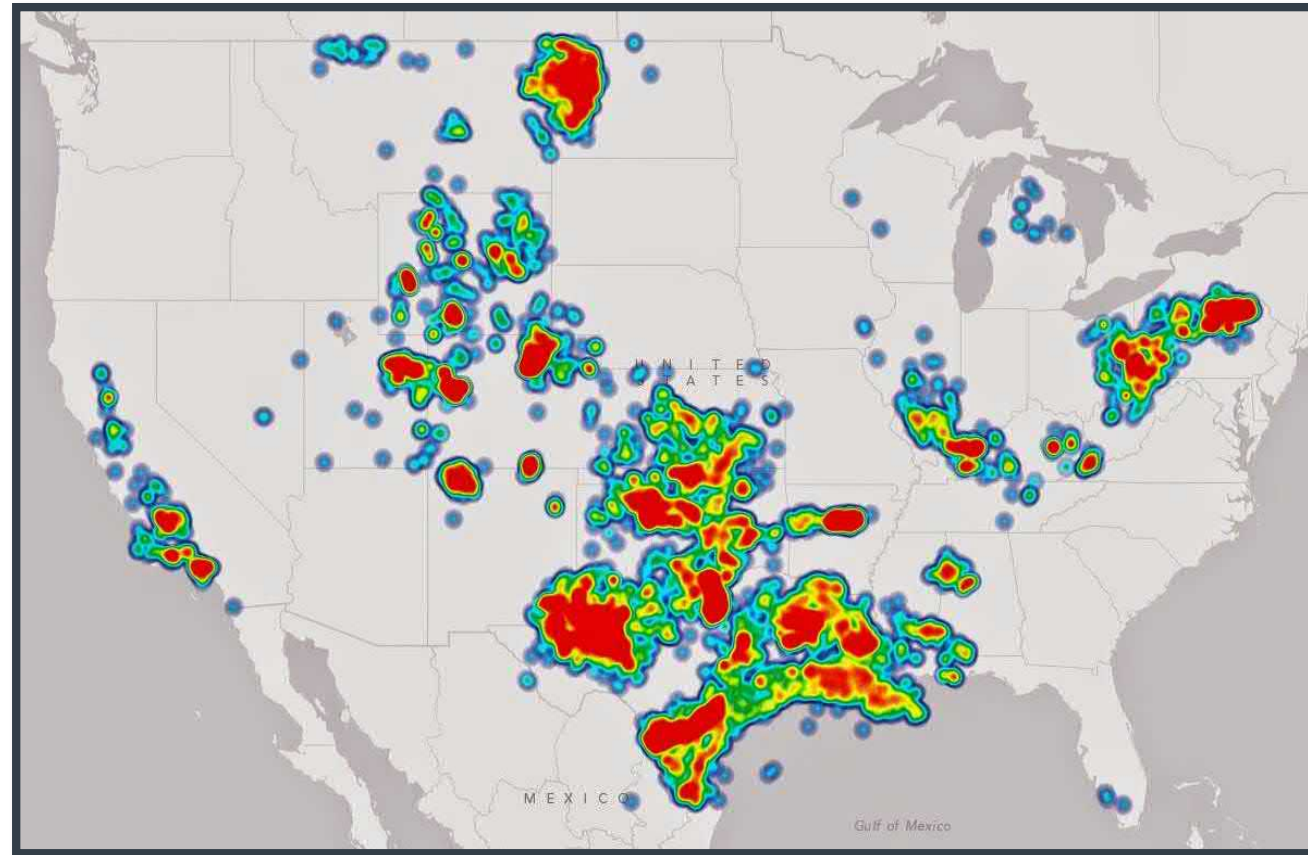
Oil and Gas Activity

Some of the research we studied



▲ Permian Basin Oil & Gas: A **20-mile corridor** of NM 31 and NM 128

» Existing, 5 and 10-year projected activities (current)



Heat Map of Oil & Gas Drilling in the U.S. (DrillingMaps.com, 2014)

Karst & Cultural Resources



- ▲ NM 31 and NM 128 corridors have potential for karst and underground geologic hazards (i.e., voids, sinkholes, caves)
- ▲ Field investigations and mitigation strategies under development



- ▲ Known archaeological/cultural resource sites
- ▲ Field investigations underway to assess potential impacts

Agency and Stakeholder Outreach



▲ Key Challenges

- » Reaching corridor users
 - Message boards for public meeting today
- » The Jal community
 - Separate public meeting
- » Oil & gas companies
 - Meetings with industry



New Mexico DEPARTMENT OF
TRANSPORTATION
MOBILITY FOR EVERYONE



NMDOT Project Development Process

Project Development Process

▲ Phase I

» **Currently in this phase**

» Phase II

» *Final Design*

» Phase III

» *Construction*

Phase IA/B: Alignment Study

- » *Establish Why Improvements are Needed*
- » *Evaluate Alternatives and Select How Improvements will be Implemented*

Phase IC: Environmental Processing

- » *Environmental Investigations*
- » *Obtain Authorization to Construct Improvements*

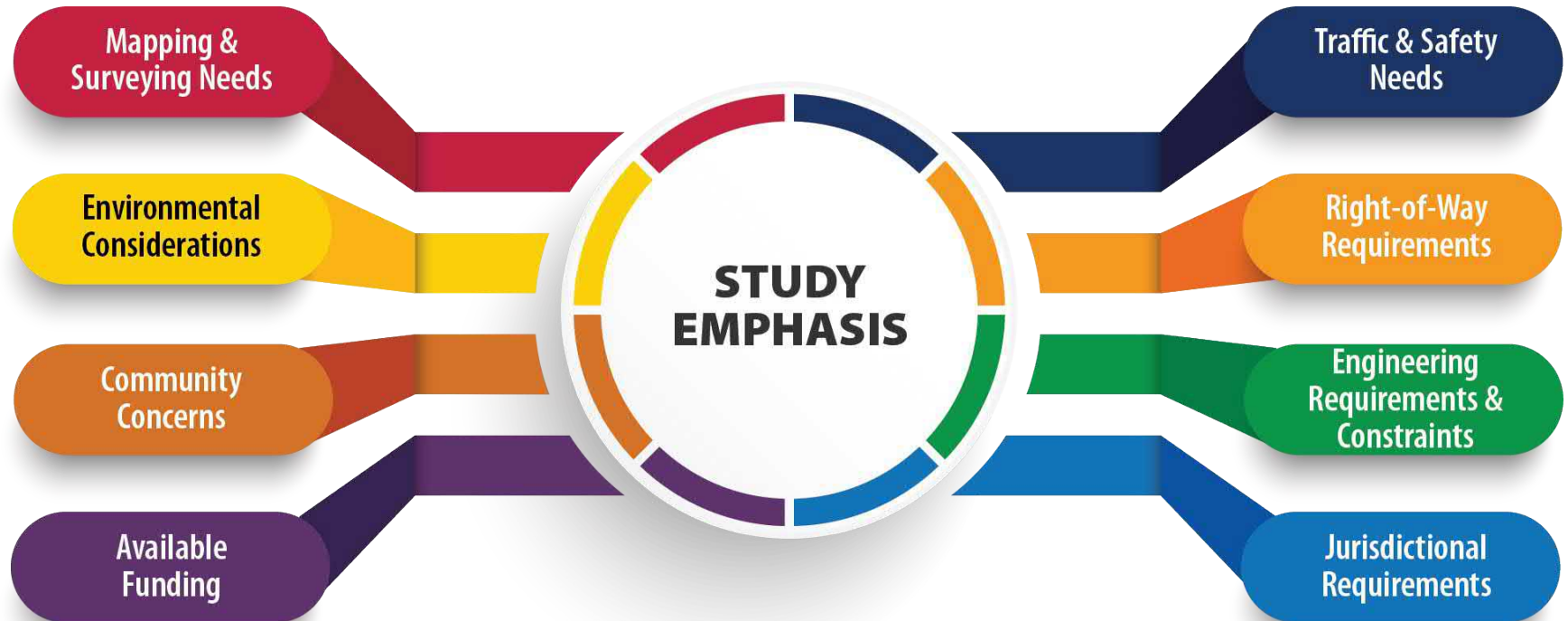
Phase ID: Preliminary Design

- » *Preliminary Engineering*
- » *Define Right-of-Way Needs*
- » *Prepare Engineering Cost Estimate*

Stakeholder and Public Involvement
– Ongoing throughout Phase I

Collect Comprehensive Data

- ✓ Design and ROW Survey
- ✓ Environmental Surveys
- ✓ Pavement Condition
- ✓ Drainage Conditions
- ✓ Traffic Operations and Safety
- ✓ Access Management
- ✓ Agency Input
- ✓ Stakeholder Input



Location Study Procedures
Update 2015



A Guidebook for:
Planning and Environmental Linkages,
Alignment Studies, and Corridor Studies



Preliminary Alternatives

Proposed Alternatives

▲ Key Challenges

- » Traffic and safety
- » Safely maintaining traffic & access during construction
- » Karst
- » Salt Lakes
- » Environmental stewardship
- » Funding
- » Utility facilities (above-ground and underground)
- » Stakeholder engagement



Traffic and Safety



▲ Traffic and Safety Improvements

- » Review corridors
 - Consider expansion to 4-lanes
 - Add passing lanes
- » Review intersections
 - Enhance safety and capacity
 - Consider adding signals at 3rd Street and NM 18 in Jalisco

Project Research Studied



▲ Texas Transportation Institute (TTI)

- » Tools and Strategies to Mitigate Impacts of Energy and Natural Resources Development prepared for the Odessa District of the Texas Department of Transportation (TxDOT) (*September 2019*)
- » Improving the Design and Construction of Pavements Impacted by Energy Development in the Permian Basin prepared for the Odessa District of the Texas Department of Transportation (TxDOT) (*May 2000*)

▲ Georgia DOT

- » Safety Performance of Rural Four-Lane Undivided Roadways and Rural Four-Lane Roadways with a Two-Way Left-Turn Lane (*December 2020*)

▲ FHWA

- » Restricted Crossing U-Turn Informational Guide (*August 2014*)

▲ Missouri DOT

- » Benefits and Design / Location Criteria for Passing Lanes (*March 2004*)



Proposed Mainline Alternatives

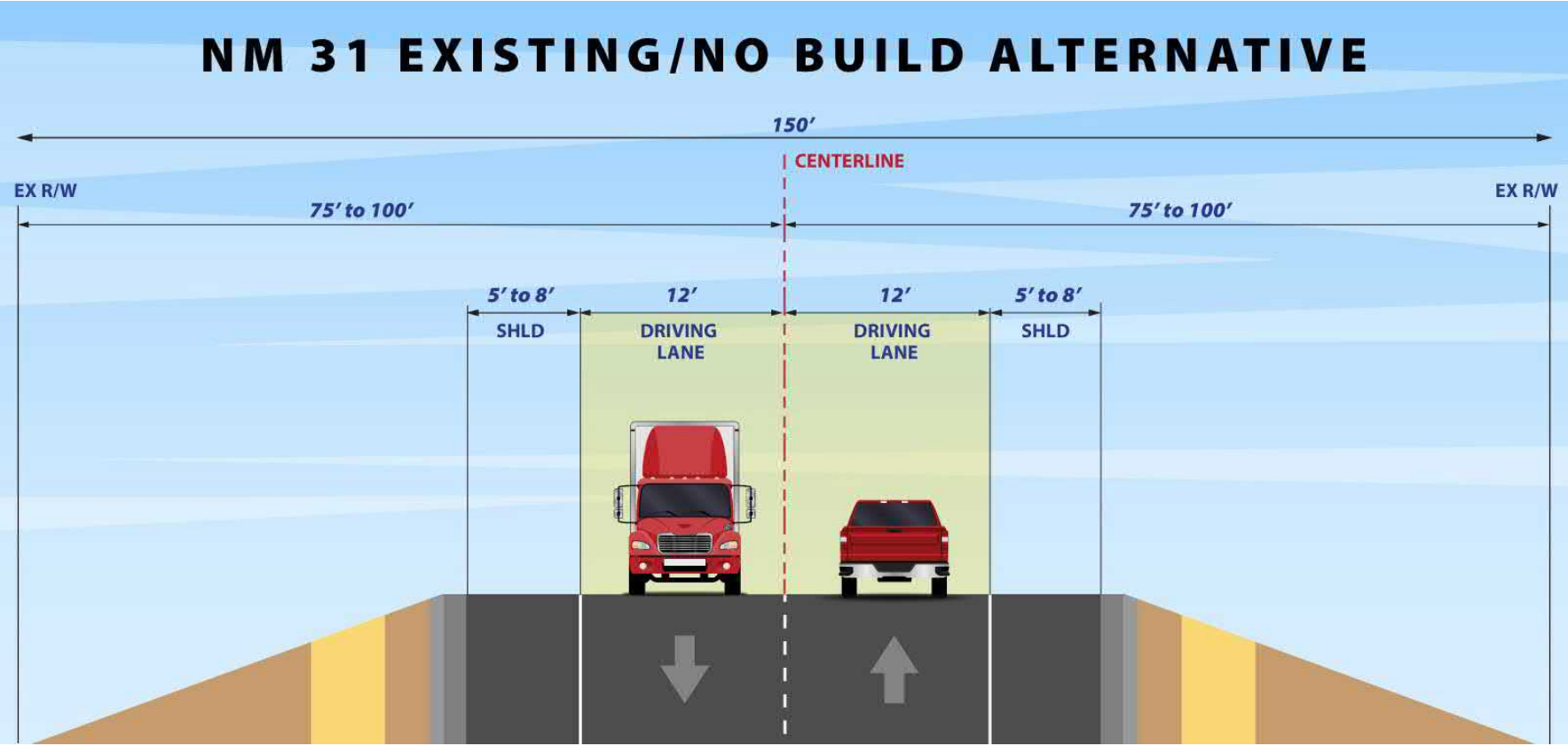


▲ Highway Improvements

» What is a Typical Section?

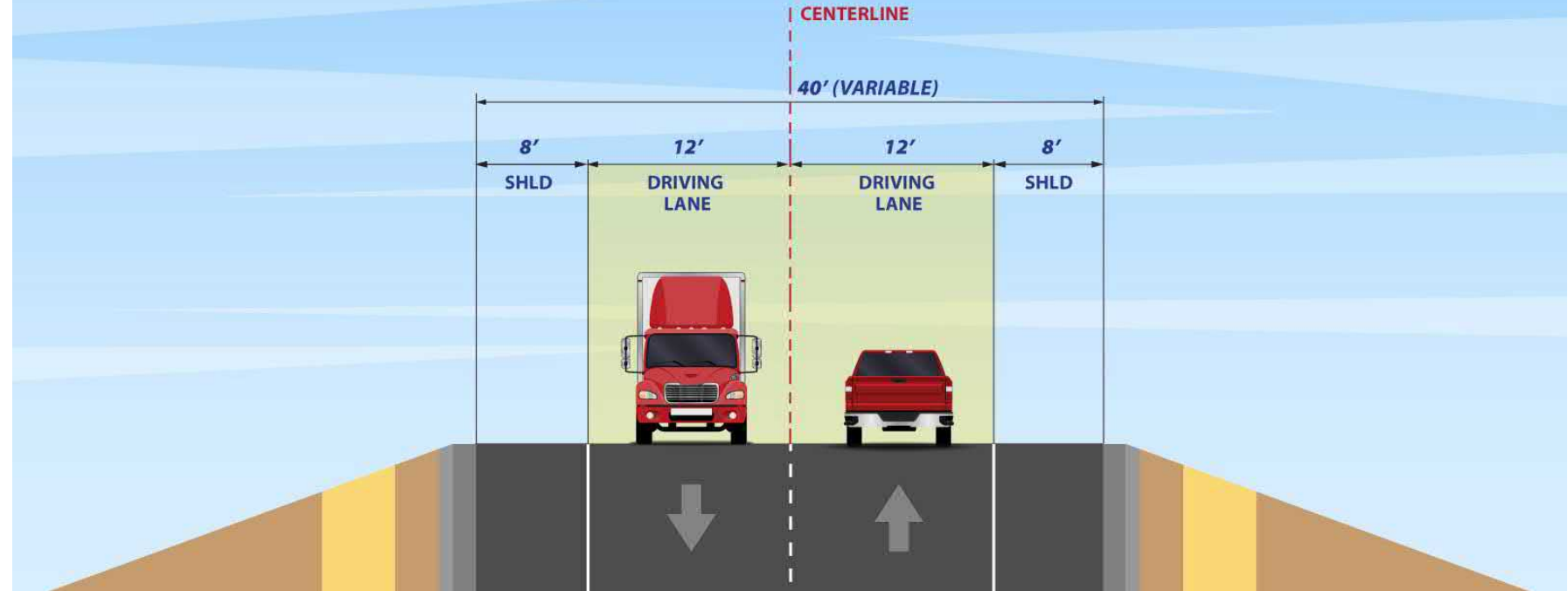
A Typical Section is a **graphical representation of the proposed work as if you were standing at a location looking down the roadway.**

No Build Alternative – NM 31



No Build Alternative – NM 128

NM 128 EXISTING/NO BUILD ALTERNATIVE

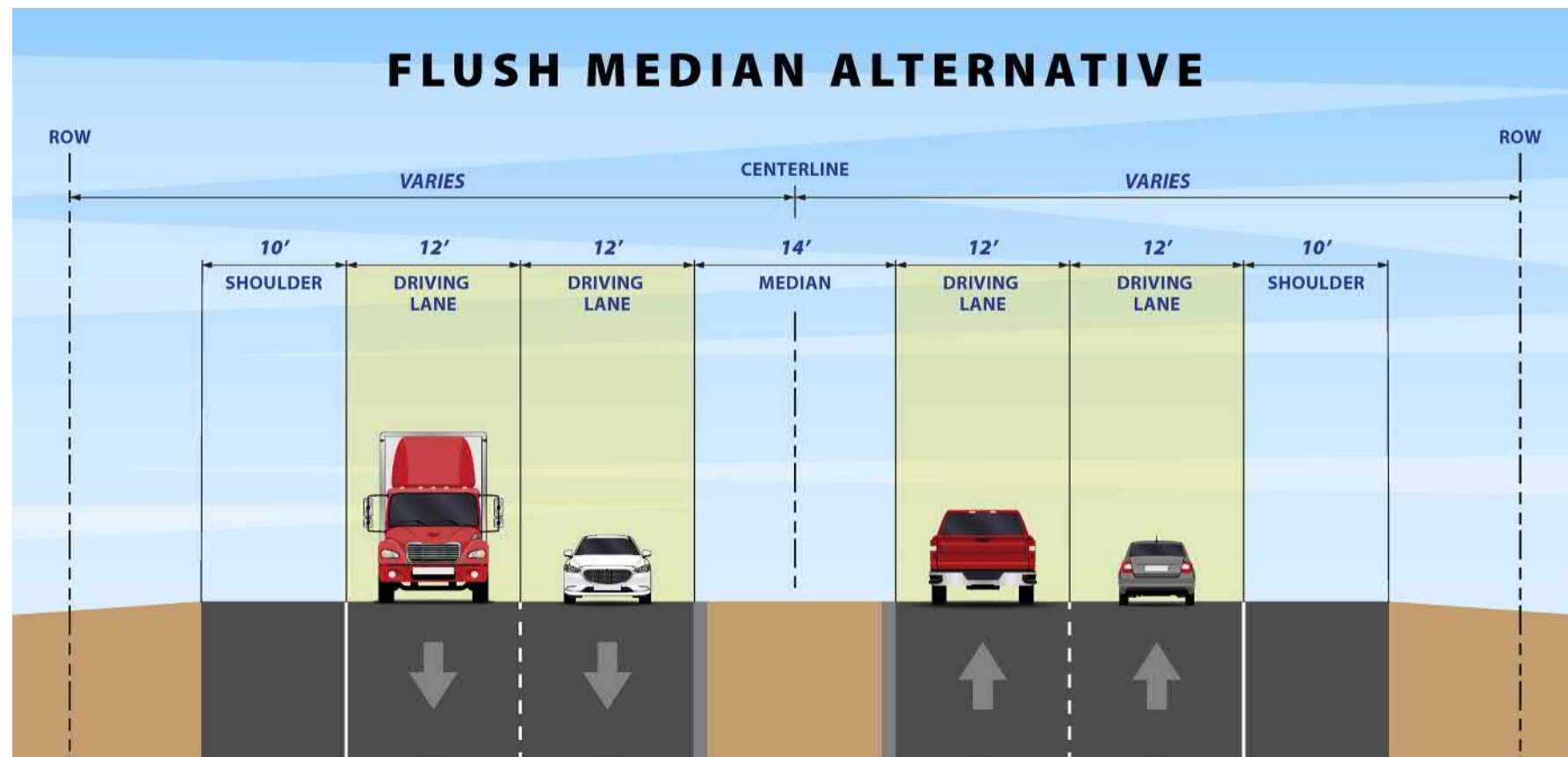


Depressed Median Alternatives



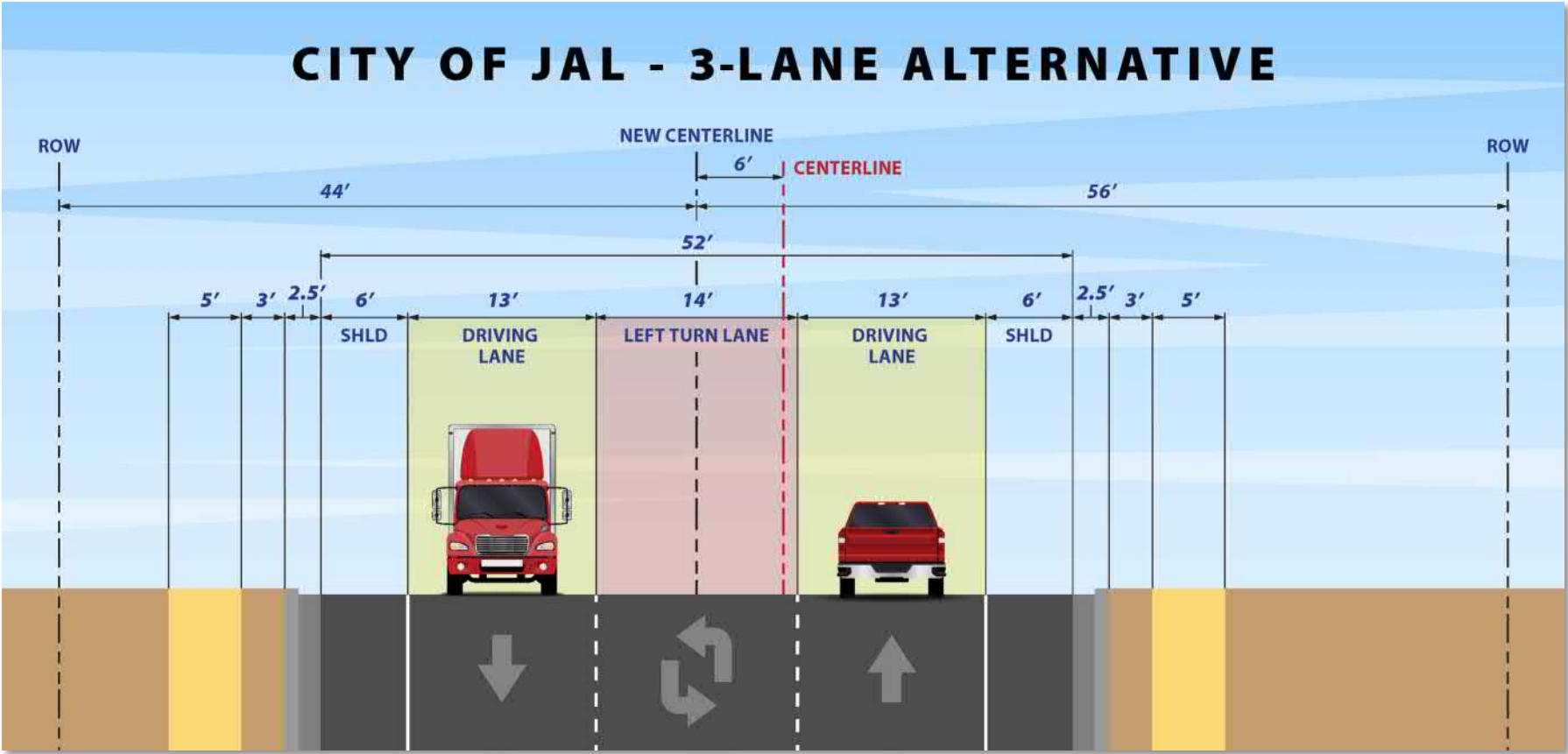
Proposed Mainline Alternatives

Flush Median Alternatives



Proposed Mainline Alternatives

JAL 3-Lane TWLTL Alternative



Proposed Mainline Alternatives

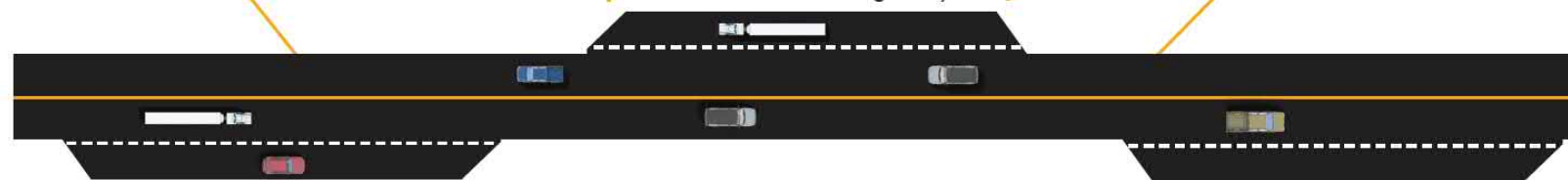
Super 2 Alternative

A Super 2 Highway

The roadway will have paved shoulders.

The passing lane length varies for each highway.

Passing lanes will alternate between directions of traffic, providing opportunities to pass about every 5 miles.



For illustration purposes only. Each highway will be evaluated for its specific needs based on terrain, access points, and other site-specific conditions.

An Enhanced 2-lane consists of periodic passing lane locations.

Proposed Mainline Alternatives

- ▲ Corridor-wide solutions reviewed first; site specific improvements featured in follow-up public meeting

- ▲ **NM 31 from US 285 to NM 128 and NM 128 from NM 31 to Jal**
 - » Depressed median 4-lane alternative
 - » Flush median / raised median 4-lane alternatives
 - » Super 2
 - » Enhanced 2-Lane
- ▲ **City of Jal Three-lane TWLTL**
 - » 4-lane and 5-lane alternatives considered
- ▲ **NM 31 from NM 128 to US 62 and NM 128 from Jal to Texas**
 - » 4-Lane
 - » Super 2
 - » Enhanced 2-lane
- ▲ **The “No-Build” will also be considered**



Proposed Intersection Alternatives



▲ Signalization,
Roundabouts, High-T, and
RCUTs

▲ NM 31-128 Intersection
Concepts

- » At grade
- » Grade separated

Proposed Intersection Alternatives

NM 31-128 Intersection Alternatives

◀ Signalization



Proposed Intersection Alternatives

NM 31-128 Intersection Alternatives



▲ Roundabouts



Proposed Intersection Alternatives

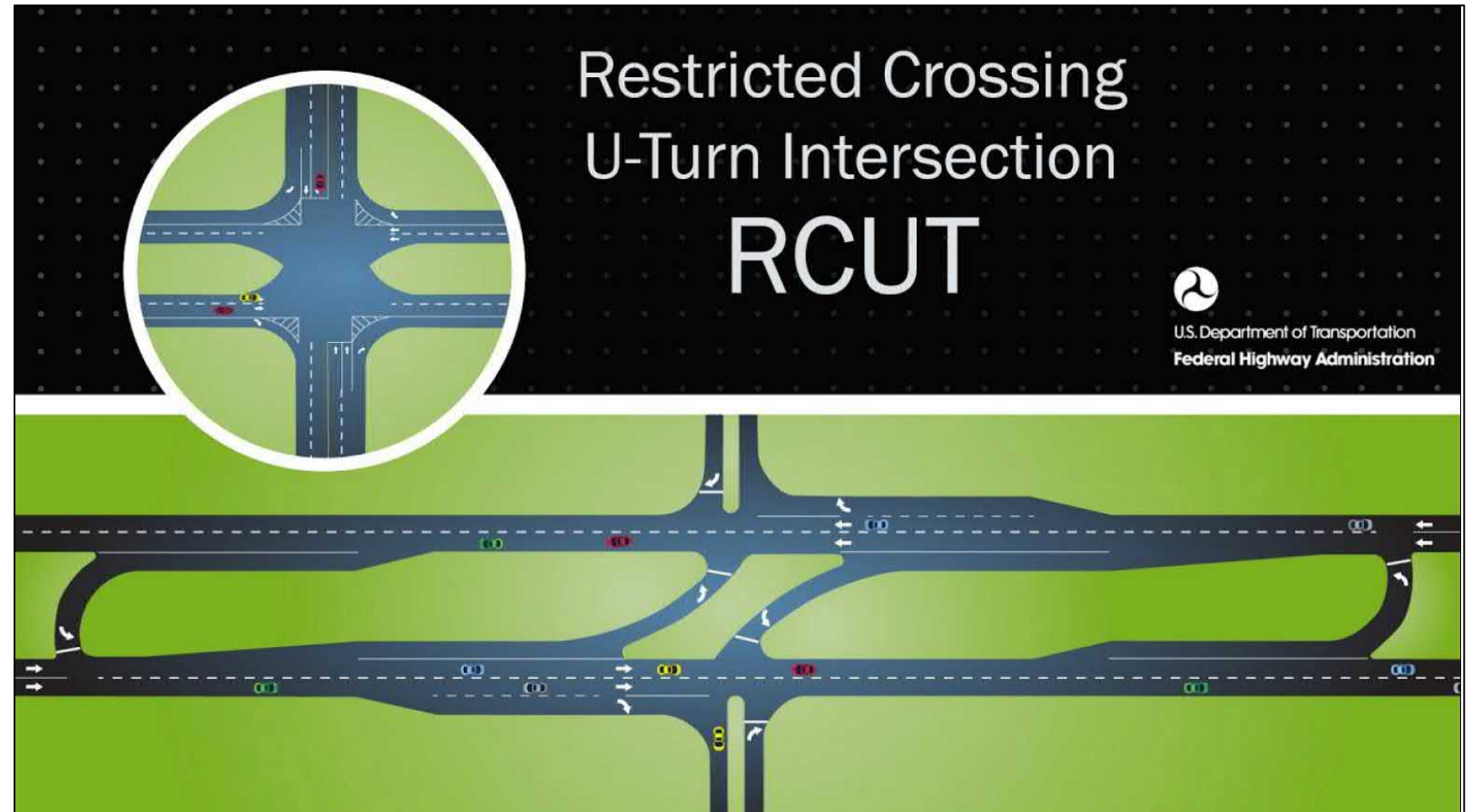
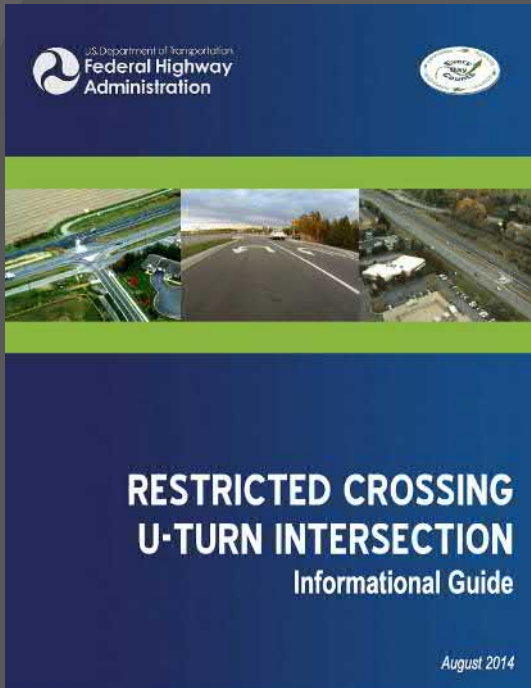
NM 31-128 Intersection Alternatives

▲ High-T



Proposed Intersection Alternatives

NM 31-128 Intersection Alternatives

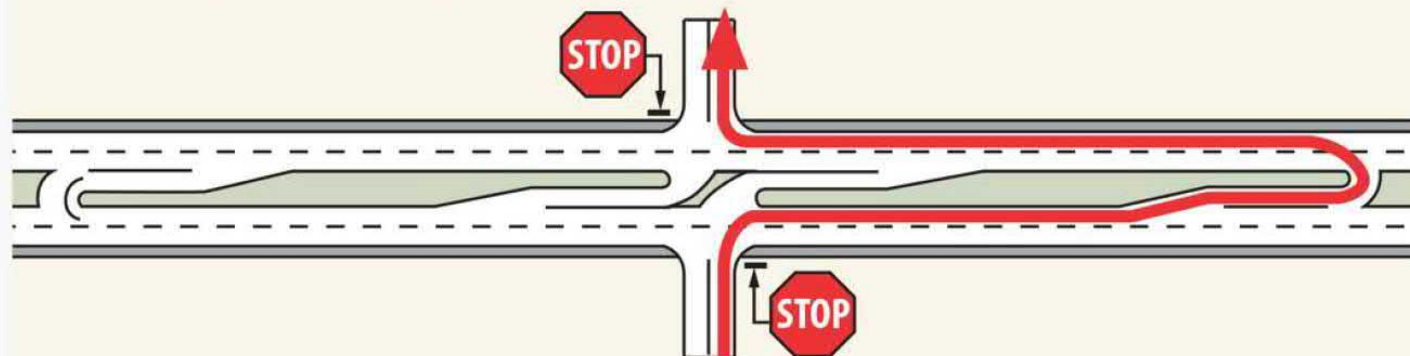


Proposed Intersection Alternatives

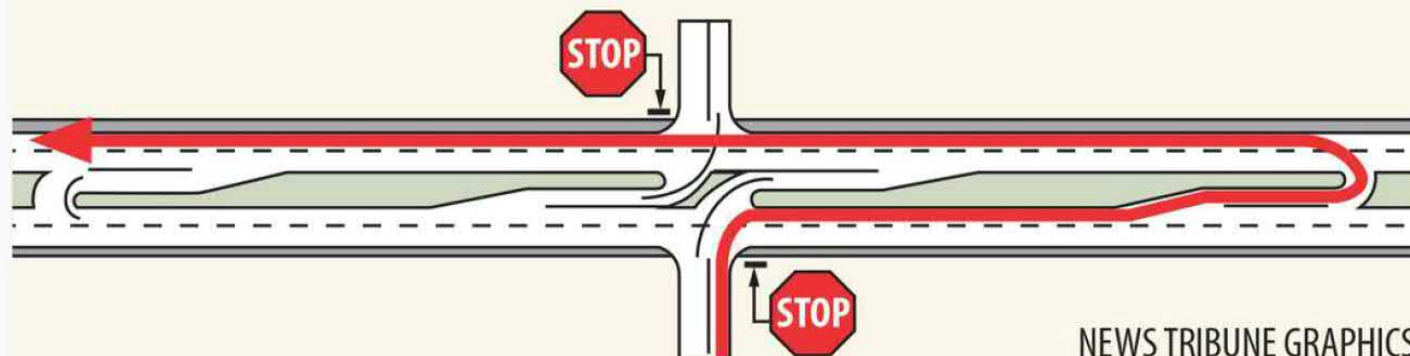
NM 31-128 Intersection Alternatives

▲ RCUTs

Crossing a highway from a J-turn intersection



Left-hand turn from a J-turn intersection

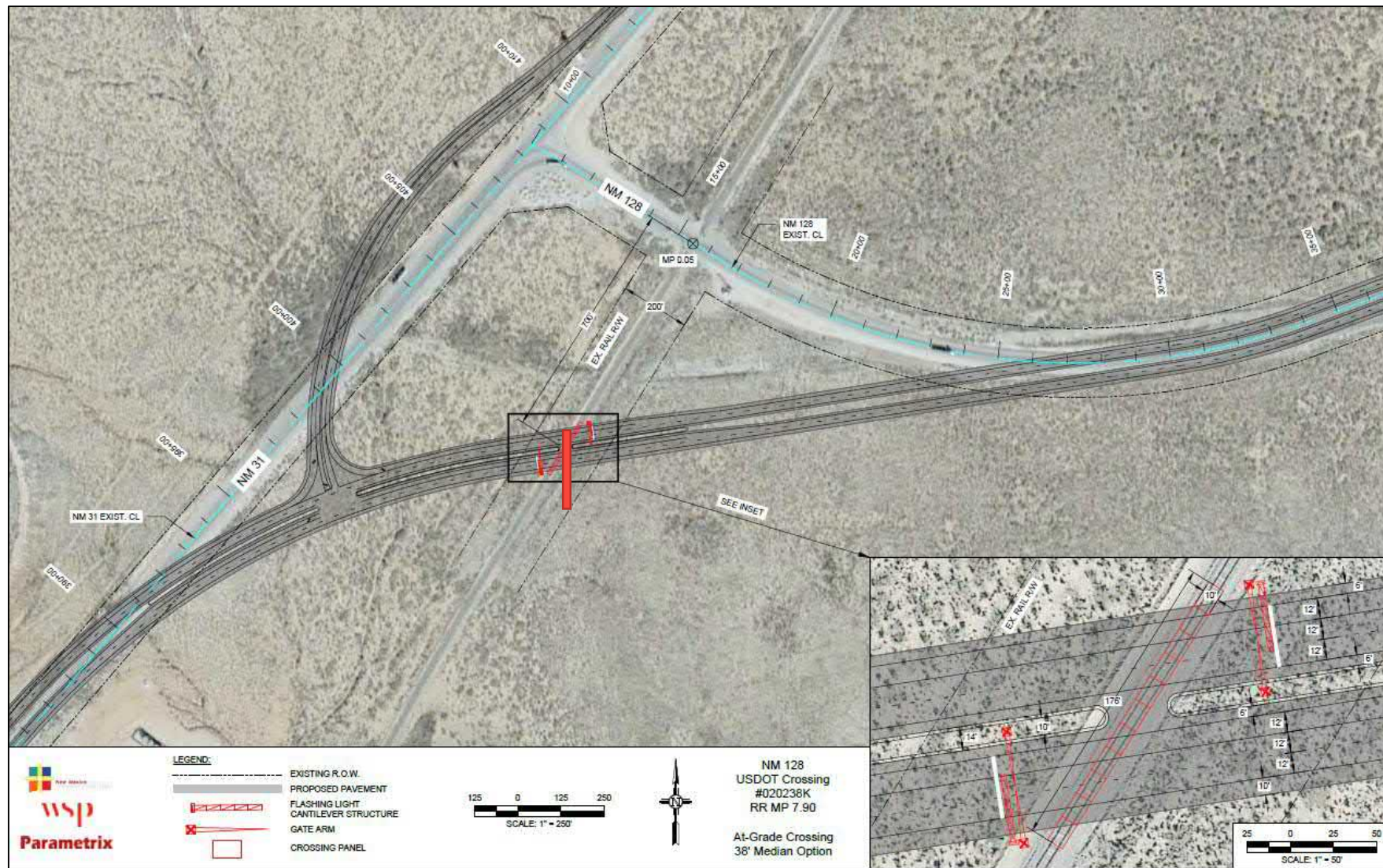


NEWS TRIBUNE GRAPHICS

Proposed Intersection Alternatives

NM 31-128 Intersection Alternatives

▲ NM 31-128 Intersection At-Grade



Proposed Intersection Alternatives

NM 31-128 Intersection Alternatives

▲ NM 31-128 Intersection At-Grade with Roundabout



Proposed Intersection Alternatives

NM 31-128 Intersection Alternatives

▲ NM 31-128 Intersection Grade Separated with RCUT



Proposed Improvements



- ▲ Railroads – 5 crossings
- ▲ Pavements and geotechnical
- ▲ Karst mitigations
- ▲ Pecos River bridge
 - » Rehabilitate existing bridge
 - » New bridge

Proposed Improvements

- ▲ Property surrounding project corridors is a combination of:
 - » Bureau of Land Management (BLM)
 - » State Land Office (SLO)
 - » Private
- ▲ An Enhanced Conceptual Engineering Design (30% level) is under development
 - » Will depict anticipated construction limits and ROW
- ▲ ROW Acquisition (and Environmental Permitting) will be based on the Enhanced Conceptual Engineering Design



Proposed Improvements



▲ Maintenance of Traffic During Construction

- » Strive to keep NM 31 and NM 128, including all access points open during construction
- » Coordination closely with stakeholders
- » Contractor expected to provide look-ahead schedules and anticipate traffic impacts
- » Traffic delays during construction likely



Comparative Analysis and Key Findings



Comparative Screening Analysis

- ▲ Several design concepts were developed to meet the project purpose and need
- ▲ These were screened to identify the most promising concepts using qualitative and quantitative assessment
- ▲ **Screening Criteria**
 - » Safety benefits
 - » Traffic benefits
 - » Compatibility with public and industry needs
 - » Land use impacts and property impacts
 - » Maintenance of traffic during construction
 - » Cost (or benefit/cost)

Comparative Screening Analysis

▲ Review of Mainline Design Concepts

- » **Enhanced 2-Lane** – Reconstructs rural segments of NM 31 and NM 128 to include
 - **2 traffic lanes** (one per direction)
 - Passing lanes at approximate 5-6 mile intervals
- » **Super 2-Lane** – Continuous alternating passing lanes
- » **Flush Median 4-Lane** – **4 traffic lanes with 14-foot median separation.**
- » **Depressed Median 4-Lane** – **4 traffic lanes with median separation.** Median width and type **varies from 38 feet to 60 feet**, depending on location.



Screening Analysis Findings – Mainline Higher Traffic Corridors

NM 31 from US 285 to NM 128
NM 128 from NM 31 to Jal

NM 31-128 Mainline Corridor-Wide Alternatives Screening Matrix						
Mainline Alternative	Safety Benefit	Traffic Benefit	Compatibility with Public and Industry Needs	Land Use and Property Impacts	Maintenance of Traffic During Construction	Overall Life-Cycle Cost
Enhanced 2-Lane	High Level of Concerns	Moderate Level of Concerns	High Level of Concerns	Low Level of Concerns	Moderate Level of Concerns	Moderate Level of Concerns
Super 2	Moderate Level of Concerns	Moderate Level of Concerns	High Level of Concerns	Low Level of Concerns	Moderate Level of Concerns	Moderate Level of Concerns
4-Lane Flush Median	Moderate Level of Concerns	Low Level of Concerns	Low Level of Concerns	Low Level of Concerns	Moderate Level of Concerns	Moderate Level of Concerns
4-Lane Divided Median	Low Level of Concerns	Low Level of Concerns	Low Level of Concerns	Moderate Level of Concerns	Low Level of Concerns	Moderate Level of Concerns

Enhanced 2-Lane and Super 2-Lane:
Not Recommended for Further Analysis

LEGEND

High Level of Concerns	High Level of Concerns
Moderate Level of Concerns	Moderate Level of Concerns
Low Level of Concerns	Low Level of Concerns

Screening Analysis Findings – Mainline Lesser Traffic Corridors

NM 31 from NM 128 to US 62
NM 128 from Jal to TX/NM State Line

NM 31-128 Mainline Corridor-Wide Alternatives Screening Matrix						
Mainline Alternative	Safety Benefit	Traffic Benefit	Compatibility with Public and Industry Needs	Land Use and Property Impacts	Maintenance of Traffic During Construction	Overall Life-Cycle Cost
Enhanced 2-Lane						
Super 2						
4-Lane						

4-Lane:
Not Recommended for Further Analysis

LEGEND

	High Level of Concerns
	Moderate Level of Concerns
	Low Level of Concerns

Screening Analysis Findings – Major Rural Intersections

NM 31 Intersections

Refinery Road
NM 128
US 62

NM 128 Intersections

WIPP Road
Orla Road
Buck Jackson
Others Being Studied

NM 31-128 Major Rural Intersections Alternatives Screening Matrix						
Mainline Alternative	Safety Benefit	Traffic Benefit	Compatibility with Public and Industry Needs	Land Use and Property Impacts	Maintenance of Traffic During Construction	Overall Life-Cycle Cost
Side Street Stop Controlled						
Signalized						
RCUT						
High-T						
Roundabout						

Side Street Stop Controlled and Signalization:
Not Recommended for Further Analysis

LEGEND

	Major Level of Concerns
	Moderate Level of Concerns
	Low Level of Concerns

Screening Analysis Findings – Major Urban Intersections (City of Jal)

NM 128 Intersections

3rd Street (Jal)

NM 18 (Jal)

NM 31-128 Major Urban Intersections Alternatives Screening Matrix						
Mainline Alternative	Safety Benefit	Traffic Benefit	Compatibility with Public and Industry Needs	Land Use and Property Impacts	Maintenance of Traffic During Construction	Overall Life-Cycle Cost
Side Street Stop Controlled						
Signalized						
RCUT						
Roundabout						

Side Street Stop Controlled, RCUT and Roundabouts:
Not Recommended for Further Analysis

LEGEND

	Major Level of Concerns
	Moderate Level of Concerns
	Low Level of Concerns



Project Delivery Method: Design-Build Procurement Phase I and Project Phasing

Design-Build

▲ Design-Build

What is Design-Build?

A procurement method where NMDOT **hires a team to complete the design and construct the project.**

Why Does NMDOT want to use Design-Build for this project?

Construction can start sooner as compared to NMDOT finishing all design. Design-Build projects **tend to move at a faster pace.**

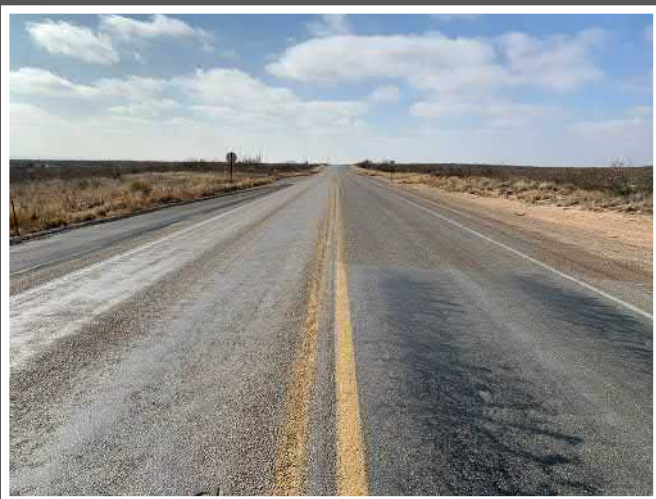
It will **look like a traditional project with contractor more involved in public outreach and key items** such as maintenance of traffic, environmental compliance and utility coordination.



Design-Build

Project Goals:

- ▲ A high quality, safe, environmentally responsible, durable, and maintainable Project
- ▲ Minimum disruption to the local industries and traveling public during construction
- ▲ Design-Build Agreement awarded and signed by **Fall 2022**
- ▲ Maximizing the value of the Design-Build delivery method



Design-Build

- ▲ The overall corridor improvements will be phased
- ▲ NMDOT will procure a single design-builder to design and construct the initial Phase I Project
- ▲ The Design-Build Project will have alternatives based on funding availability
- ▲ NMDOT will use a “best value” approach to select the design-builder



Design-Build

The Design-Build phase (Phase I) will be federally funded and consist of the following base elements:

- ▲ Improvements to NM 31 from 0.5 miles east of U.S. 285 through the NM 128 intersection
- ▲ The NM 31-128 intersection
 - » Estimated cost: **\$70-\$80 million**

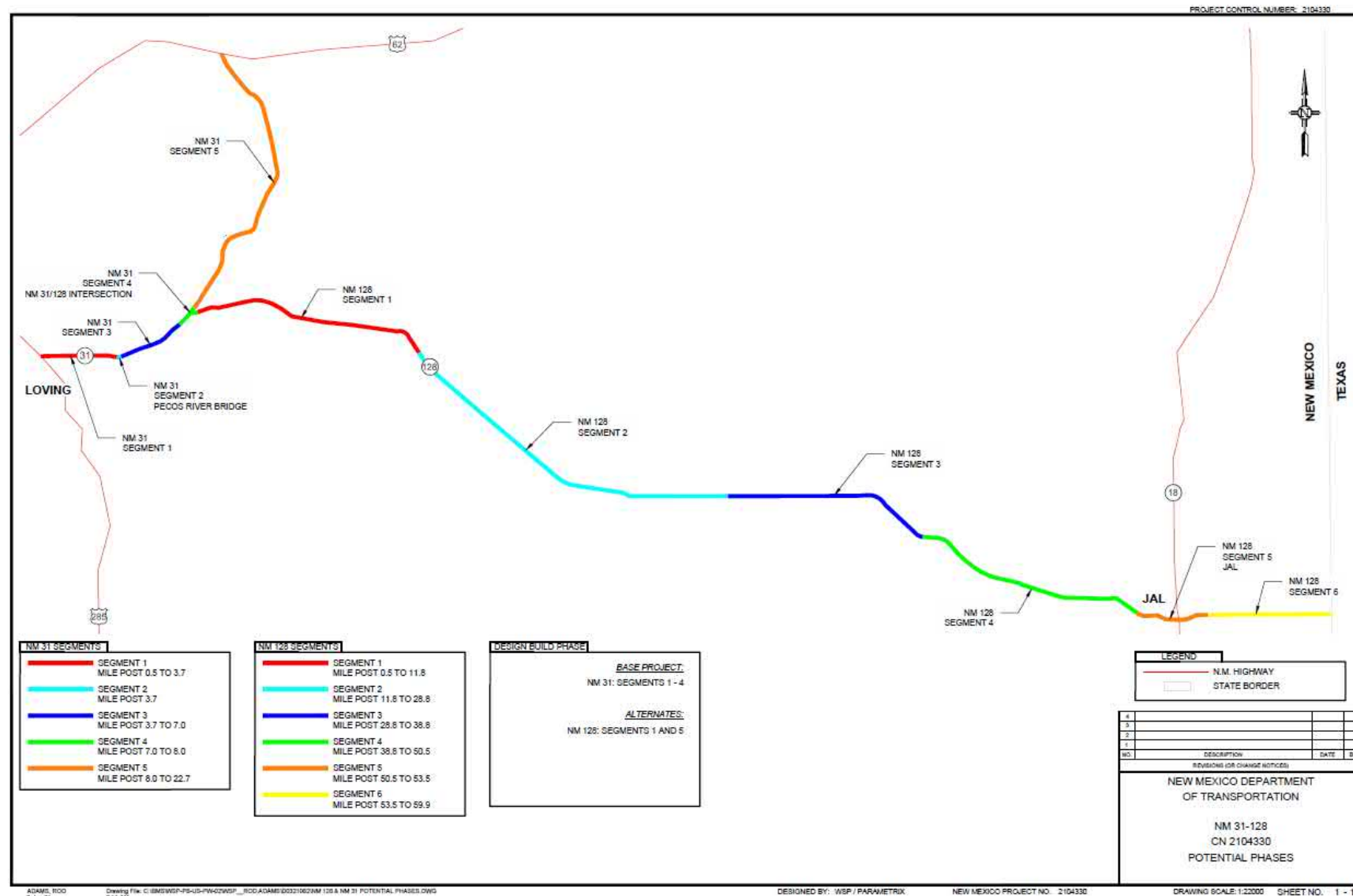


Design-Build

The Design-Build Phase (1st) will consist of the following add alternative elements:

- ▲ City of Jal Improvements
 - » Estimated Cost: **\$16-\$19 million**
- ▲ NM 128 from NM 31 to the WIPP Road
 - » Estimated Cost: **\$40-\$45 million**
- ▲ NM 31 and NM 128 Site Safety Improvements
 - » Estimated Cost: **\$2-\$10 million**
- ▲ Added into Design-Build Contract or as Deferred Work to the Design Build Agreement, if funding is secured.

Conceptual Project Phasing





Schedule and Next Steps

Project Schedule

- ▲ Start of study (Phase IA/B) – **Fall 2020**
 - » *Public meeting – **August 2021***
 - » *Public meeting for Jal – **September 2021***
- ▲ Completion of study – **November/December 2021**
- ▲ Initial engineering design development – **Summer 2021 through Spring 2022**
- ▲ Environmental analysis & documentation – **Spring/Summer 2022**
- ▲ Public meeting – **January/February 2022**
- ▲ Anticipated construction (Design-Build) – **Fall/Winter 2022^{1,2}**
 - » *Multiple Construction Phases Depending on Funding*

We are Here

1. Estimated
2. Funding dependent

Next Steps

- ▲ City of Jal Public Meeting – **September 14**
- ▲ Gather Public Input
- ▲ Perform Detailed Evaluation of Alternatives
- ▲ Finalize Phase IA/B Study
- ▲ Hold Additional Public Meeting and Gather Input
- ▲ Initial Engineering
- ▲ Complete Environmental Documentation
- ▲ Develop Design-Build Contract Documents (RFQ, RFP) – **Now through Summer 2022**
- ▲ ROW acquisition
- ▲ Select Design-Build Team – **Fall 2022**
- ▲ Start Construction of Phase I

We Want to Hear from You...

Please provide us with comments by
September 30, 2021

Electronic submittals
preferred

▲ How to Provide Comments?

- » **Email:** jennifer.hyre@wsp.com
- » **Call:** (505) 878-6577
- » **Mail:** WSP | Jennifer Hyre | Attn: *NM 31-128*
2440 Louisiana Blvd NE, Suite 400
Albuquerque, NM 87110

▲ Project website

<https://nm31-128project.nmdotprojects.org>

All Comments are welcome!!



THANK YOU

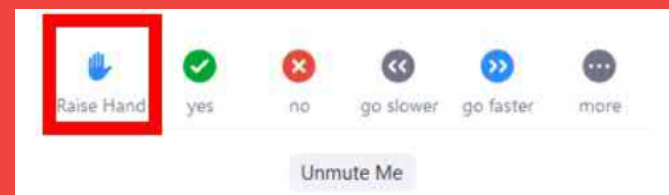


New Mexico DEPARTMENT OF
TRANSPORTATION
MOBILITY FOR EVERYONE

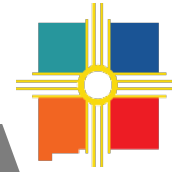


Questions

If you would like to speak,
raise your hand
Press *9 if you have dialed-in



Public Meeting Number 2, September 14, 2021



New Mexico DEPARTMENT OF
TRANSPORTATION
MOBILITY FOR EVERYONE



City of Jal Virtual Public Information Meeting

**NM 31-128
Alignment Study and
Design-Build Project
CN 2104330**

September 14, 2021



Meeting Platform: Zoom

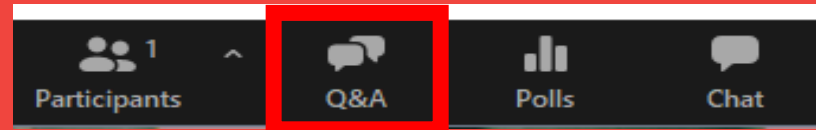


- ▲ Zoom Webinar – only presenters will be on video
- ▲ **This meeting is being recorded**
- ▲ For Spanish translation, select the Interpretation icon on your Zoom toolbar; select “Spanish”
- ▲ *Para escuchar la presentación en español, seleccione el ícono de Interpretación en la barra de herramientas de Zoom; seleccione “Spanish”*

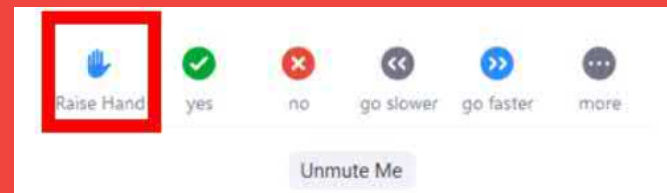


Meeting Platform: Zoom(Cont.)

- Questions & Answers – Please add project-related questions in the Q&A dialogue box



- During Q&A, if you would like to speak, raise your hand (*9 if you have dialed-in)*



Presenters

▲ New Mexico Department of Transportation (NMDOT) Team Presenters:

- **Francisco Sanchez**, NMDOT District 2 District Engineer
- **Michael Smelker**, NMDOT Project Development Engineer
- **Terry Ward**, WSP Project Manager
- **Jennifer Hyre**, WSP Environmental Planner



Agenda

▲ Presentation Topics

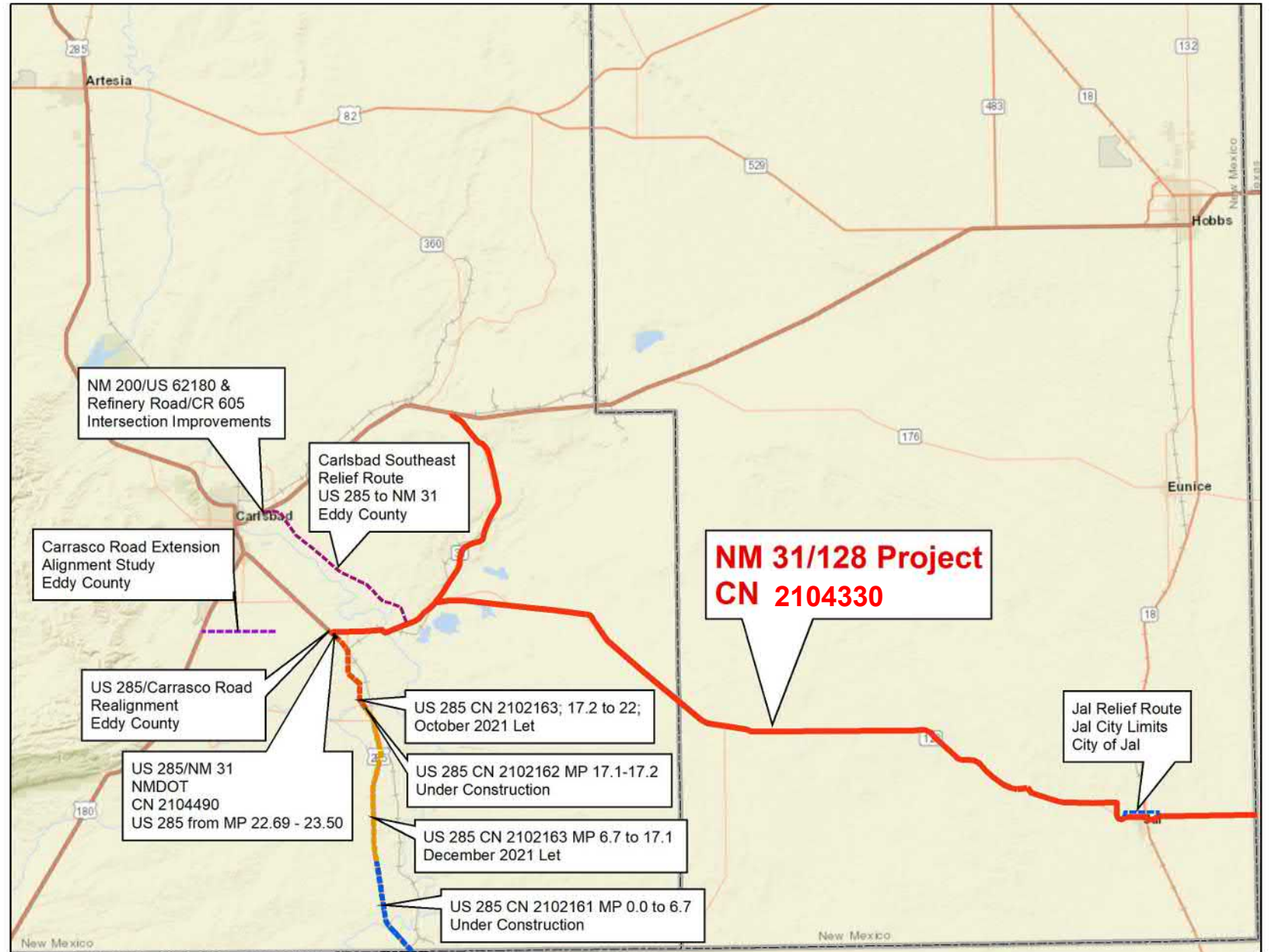
1. Re-Cap of August 31st Public Meeting
2. Jal Background and Project Context
3. NMDOT Project Development Process
4. Jal Preliminary and Recommended Alternatives
5. Jal Construction Maintenance of Traffic
6. Design-Build Procurement – Phase I and Project Phasing
7. Schedule and Next Steps

▲ Questions



Numerous Active Projects in SE NM

Tonight we're here
to talk about the
NMDOT NM 31-128
Project





New Mexico DEPARTMENT OF
TRANSPORTATION
MOBILITY FOR EVERYONE



Overview of August 31st Public Meeting

Overview of August 31st Public Meeting



▲ The following items were featured for NM 31 and NM 128:

- » Background
- » Purpose and Need
- » Existing Conditions
 - Traffic Density and Crashes
 - Access Management
 - Utilities
 - Environmental / Karst
 - Oil & Gas Activity and Research
- » Mainline and Intersection Alternatives

Stakeholders

We've spoken with
all of them



- ▲ Eddy and Lea County
- ▲ City of Jal
- ▲ City of Carlsbad
- ▲ Bureau of Land Management (BLM)
- ▲ State Land Office (SLO)
- ▲ Oil & Gas Industry
- ▲ Waste Isolation Pilot Plant (WIPP)
- ▲ Mosaic and Intrepid Potash
- ▲ United Salt Corporation
- ▲ Burlington Northern RR
- ▲ Texas New Mexico RR
- ▲ TxDOT
- ▲ FHWA



Project Website

▲ **Project Information:** <https://nm31-128project.nmdotprojects.org/>

- This presentation will also be posted there





Jal Background and Project Context

Traffic and Safety

NM 128 Average Daily Traffic and % Trucks

NM 128 Segment	Average Daily Traffic Volume (vehicles/day)	
	2019	2041
MP 0.0 to WIPP Road	8,200	10,600
WIPP Road to Red Road	8,200	10,600
Red Road to Buck Jackson Road	8,200	10,600
Buck Jackson Road to Orla Road	8,200	11,500
Orla Road to Delaware Basin Road	9,200	12,000
Delaware Basin Road to Battle Axe Road	9,200	12,600
Battle Axe Road to 3rd St	10,400	14,000
3rd St to NM 18	9,400	12,600
NM 18 to Schooley Road	6,200	8,300
Schooley Road to Willis Road	6,200	8,300
Willis Road to NM/Texas Stateline	6,200	8,300

% Trucks generally range from 20-30%



Project Traffic Delay



City of Jal
September 29, 2019 (Sunday) from 4:23 pm to 5:15 pm
Video



Jal Pavement Conditions

▲ Jal Deteriorated Pavement Conditions

- » Existing Pavements are Generally in Poor Condition
- » Reconstruction in Jal
- » Consider Trucks



Jal Drainage Challenges

▲ Jal Drainage Challenges

- » Plugged Drainage Structures
- » Jal Floodplain Areas
- » NM 128 / NM 18 Intersection Area



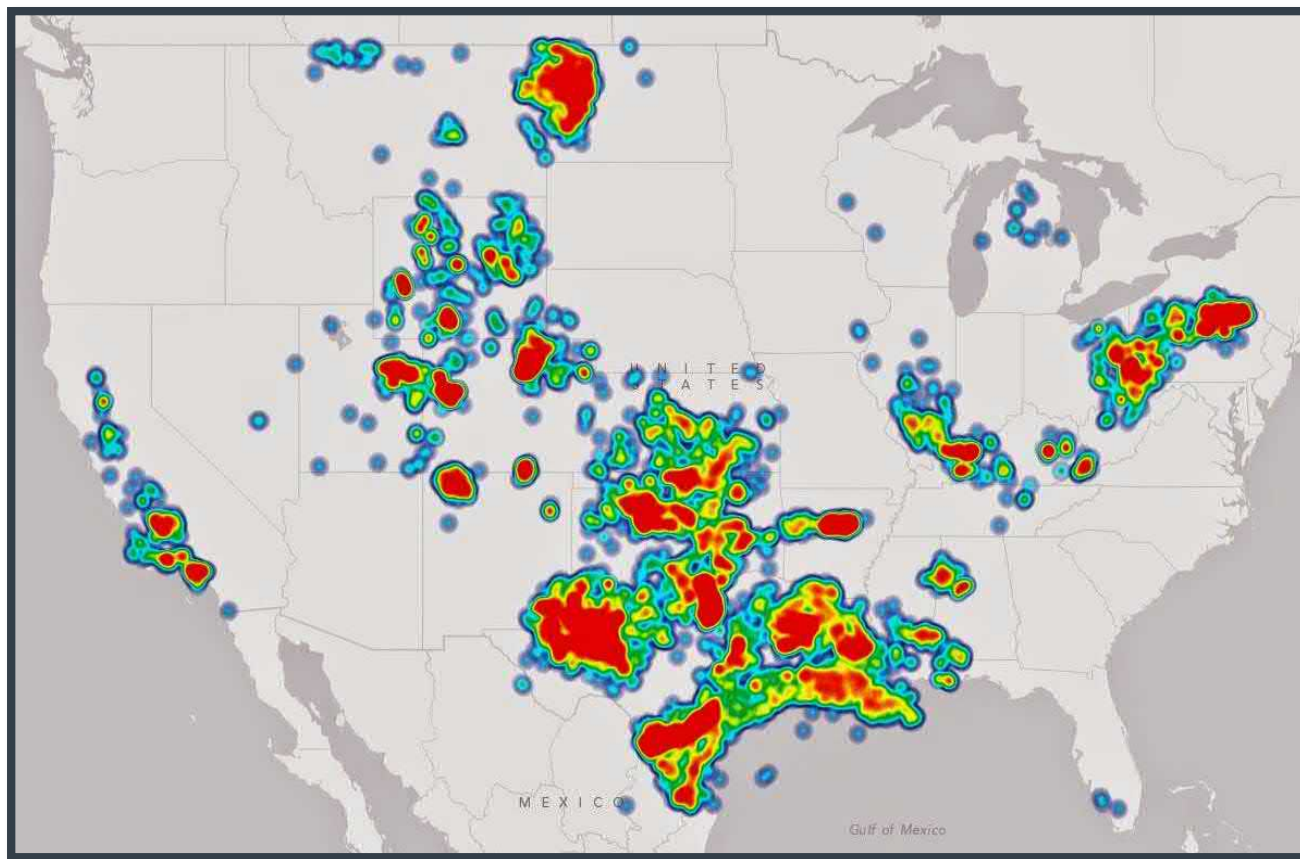
Oil and Gas Activity

Some of the research we studied



▲ Permian Basin Oil & Gas: A **20-mile corridor** of NM 31 and NM 128

» Existing, 5 and 10-Year Projected Activities (Current)



Heat Map of Oil & Gas Drilling in the U.S. (DrillingMaps.com, 2014)



New Mexico DEPARTMENT OF
TRANSPORTATION
MOBILITY FOR EVERYONE



NMDOT Project Development Process

Project Development Process

▲ Phase I

» **Currently in this phase**

» Phase II

» *Final Design*

» Phase III

» *Construction*

Phase IA/B: Alignment Study

- » *Establish Why Improvements are Needed*
- » *Evaluate Alternatives and Select How Improvements will be Implemented*

Phase IC: Environmental Processing

- » *Environmental Investigations*
- » *Obtain Authorization to Construct Improvements*

Phase ID: Preliminary Design

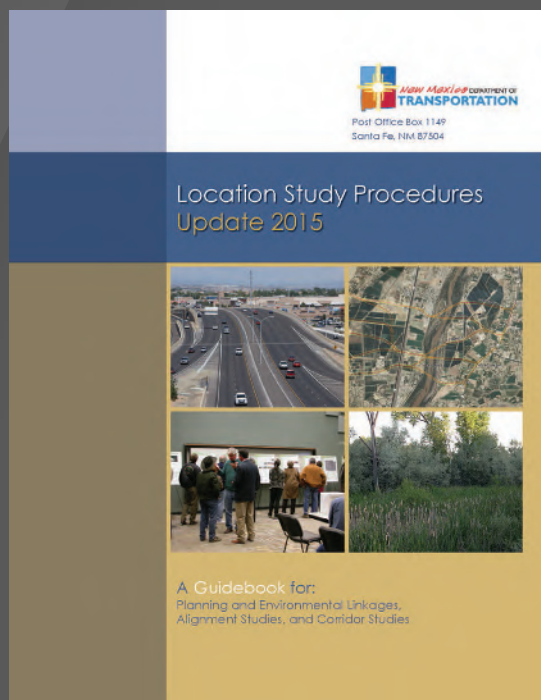
- » *Preliminary Engineering*
- » *Define Right-of-Way Needs*
- » *Prepare Engineering Cost Estimate*

Stakeholder and Public Involvement
– Ongoing throughout Phase I

Collect Comprehensive Data

- ✓ Design and R/W Survey
- ✓ Environmental Surveys
- ✓ Pavement Condition
- ✓ Drainage Conditions

- ✓ Traffic Operations and Safety
- ✓ Access Management
- ✓ Agency Input
- ✓ Stakeholder Input





Jal Preliminary and Recommended Alternatives

Jal Proposed Alternatives



▲ Key Challenges

- » Traffic and Safety
 - NM 128 / NM 18, including Railroad Crossing
 - NM 128 / 3rd Street
- » Safely Maintaining Traffic & Access During Construction
- » Funding
- » Utility Facilities
- » Stakeholder Engagement

Proposed Mainline Alternatives



▲ Highway Improvements

» What is a Typical Section?

A Typical Section is a **graphical representation of the proposed work as if you were standing at a location looking down the roadway.**

Proposed Mainline Alternatives

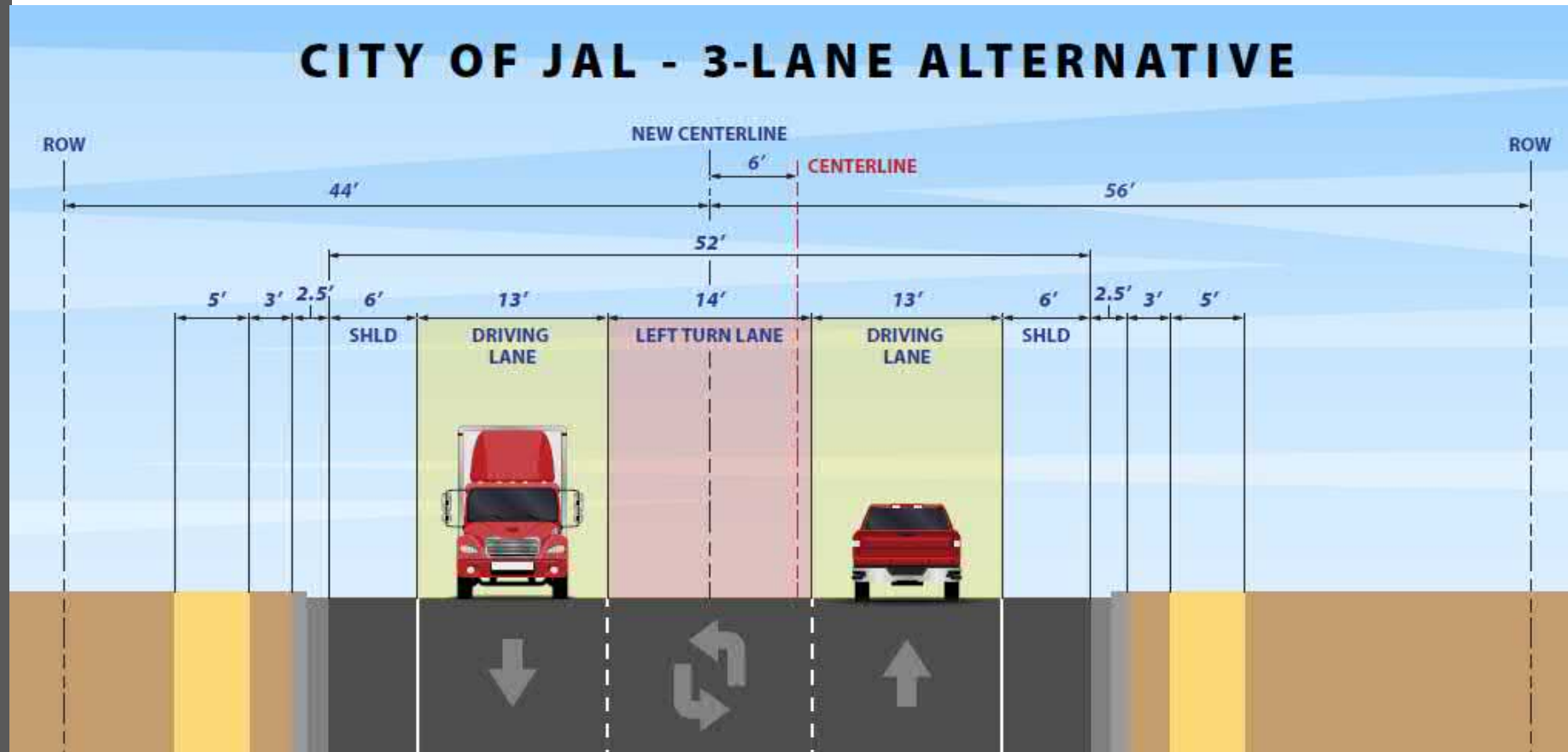
3-Lane TWLTL Alternative

▲ Jal NM 128 Alternatives

The No Build will
also be considered

▲ Jal NM 128 Alternatives

- » 3-Lane – Two-Way Left Turn Lane (TWLTL)
 - Matches Existing, except wider
- » 4-Lane – Screened out
- » 5-Lane – Screened out



Proposed NM 128 Alternatives in Jal

3-Lane TWLTL Alternative



▲ NM 128 TWLTL Layout in Jal in a Few Slides

- » In the air looking down at what is proposed at this time to be built
- » **Virtual Meetings with Project Team for NM 128 abutting property owners** can be scheduled by contacting WSP, Jennifer Hyre (*contact information provided at end*)
- » **In-Person meetings will be offered by the project team to the properties/businesses** abutting NM 128 in the City of Jal during the months of **October-December**



Proposed NM 128

JAL 3-Lane TWLTL Alternative



▲ Review of Project Layout in Jal





Jal Construction Maintenance of Traffic

Jal Proposed Improvements

▲ Maintenance of Traffic During Construction

- » Strive to keep NM 31 and NM 128 open during construction, including all access points
- » Coordination closely with stakeholders and businesses
- » Contractor expected to provide look-ahead schedules and anticipate traffic impacts
- » Traffic delays during construction likely



Jal Proposed Improvements

▲ Maintenance of Traffic During Construction

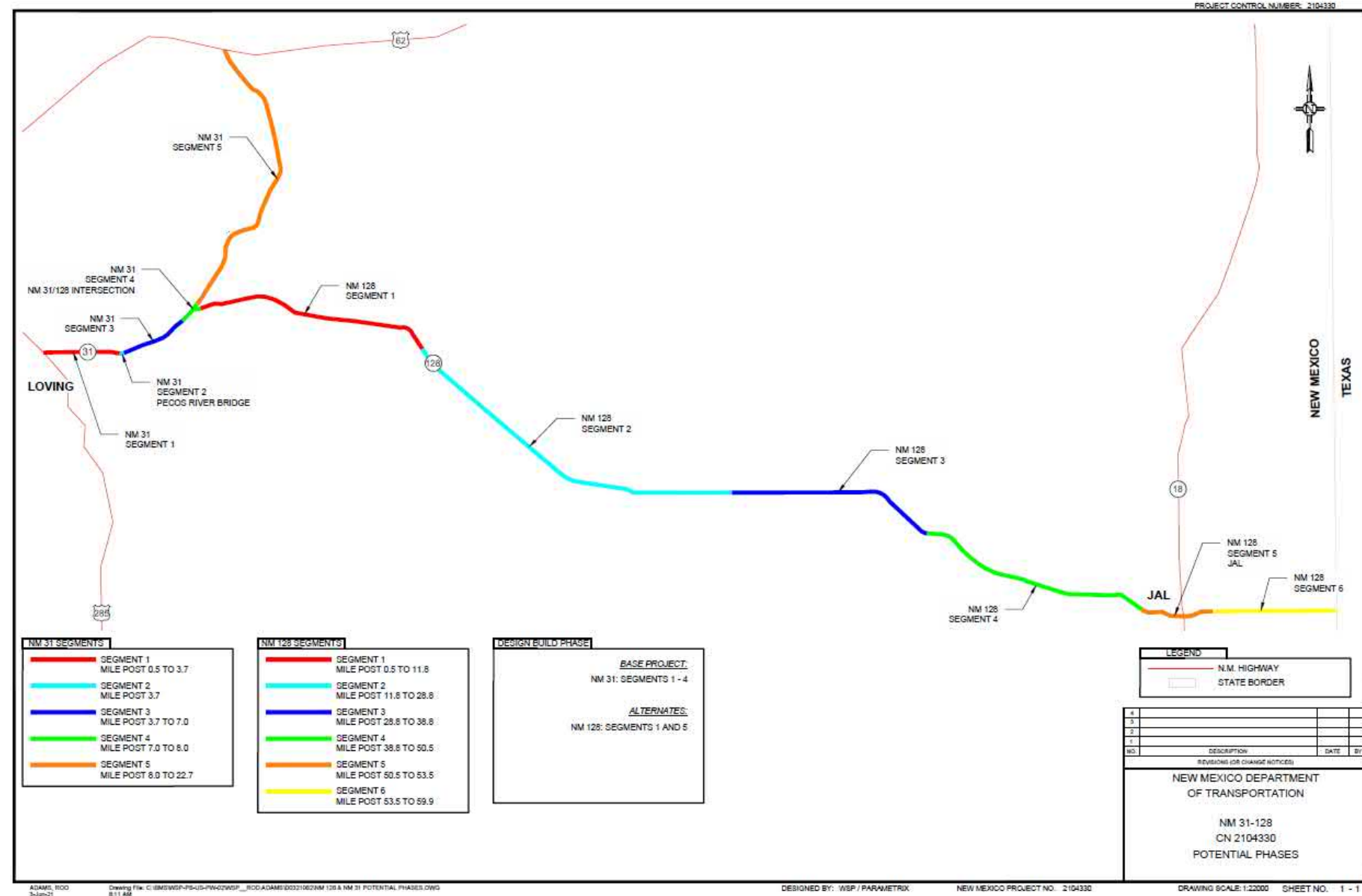
» Typical Sections





Project Delivery Method: Design-Build Procurement Phase I and Project Phasing

Conceptual Project Phasing



ADAMS, ROD
3-1-2023

Drawing File: C:\BMS\WSP-PS-US-PW-22\WSP_..._ROD\ADAMS\2023\1062\NM 128 & NM 31 POTENTIAL PHASES.DWG
8/11/2023

DESIGNED BY: WSP / PARAMETRIX

NEW MEXICO PROJECT NO.: 2104330

DRAWING SCALE: 1:22000 SHEET NO.: 1 - 1



Design-Build

▲ Design-Build

What is Design-Build?

A procurement method where NMDOT **hires a team to complete the design and construct the project.**

Why Does NMDOT want to use Design-Build for this project?

Construction can start sooner as compared to NMDOT finishing all design. Design-Build projects **tend to move at a faster pace.**

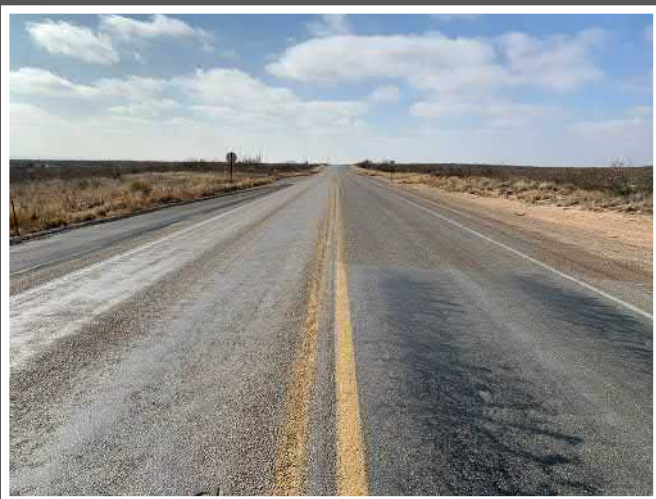
It will **look like a traditional project with contractor more involved in public outreach and key items** such as environmental compliance and utility coordination.



Design-Build

Project Goals:

- ▲ A high quality, safe, environmentally responsible, durable, and maintainable Project
- ▲ Minimum disruption to the local industries and traveling public during construction
- ▲ Design-Build Agreement awarded and signed by **Fall 2022**
- ▲ Maximizing the value of the Design-Build delivery method



Design-Build

- ▲ The overall corridor improvements will be phased
- ▲ NMDOT will procure a single design-builder to design and construct the initial Phase I Project
- ▲ The Design-Build Project will have alternatives based on funding availability
- ▲ NMDOT will use a “best value” approach to select the design-builder



Design-Build

The Design-Build phase will be federally funded and consist of the following base elements:

- ▲ Improvements to NM 31 from 0.5 miles east of U.S. 285 through the NM 128 intersection
- ▲ The NM 31-128 intersection
 - » Estimated cost: **\$70-\$80 million**



Design-Build

The Design-Build Phase will consist of the following add alternative elements:

- ▲ **City of Jal Improvements**
 - » Estimated Cost: **\$16-\$19 million**
- ▲ **NM 128 from NM 31 to the WIPP Road**
 - » Estimated Cost: **\$40-\$45 million**
- ▲ **NM 31 and NM 128 Site Safety Improvements**
 - » Estimated Cost: **\$2-\$10 million**
- ▲ **Added into Design-Build Contract, if funding is secured.**





New Mexico DEPARTMENT OF
TRANSPORTATION
MOBILITY FOR EVERYONE



Schedule and Next Steps

Project Schedule



- ▲ Start of study (Phase IA/B) – **Fall 2020**
 - » *Public meeting – **August 31, 2021***
 - » *Public meeting for Jal – **September 14, 2021*** ← **We are Here**
- ▲ Completion of study – **November/December 2021**
- ▲ Initial engineering design development – **Summer 2021 through Spring 2022**
- ▲ Environmental analysis & documentation – **Spring/Summer 2022**
- ▲ Public meeting – **January/February 2022**
- ▲ Anticipated construction (Design-Build) – **Fall/Winter 2022^{1,2}**
 - » *Multiple Construction Phases Depending on Funding*

1. Estimated
2. Funding dependent

Next Steps

- ▲ Gather Public Input
- ▲ Perform Detailed Evaluation of Alternatives
- ▲ Finalize Phase IA/B Study
- ▲ Additional Public Meeting and Gather Input
- ▲ Initial Engineering
- ▲ Complete Environmental Documentation
- ▲ Develop Design-Build Contract Documents (RFQ, RFP) – **Now through Summer 2022**
- ▲ ROW Acquisition
- ▲ Select Design-Build Team – **Fall 2022**
- ▲ Start Construction of Phase I Design-Build Improvements



We Want to Hear from You...

Please provide us with comments by October 15, 2021.

Electronic submittals preferred

▲ How to Provide Comments

- » **Email:** jennifer.hyre@wsp.com
- » **Call:** (505) 878-6577
- » **Mail:** WSP | Jennifer Hyre | Attn: *NM 31-128*
2440 Louisiana Blvd NE, Suite 400
Albuquerque, NM 87110

▲ Properties/businesses abutting NM 128 in the City of Jal – ask us for a meeting

▲ Project web site

<https://nm31-128project.nmdotprojects.org>

All Comments are Welcome!!





THANK YOU

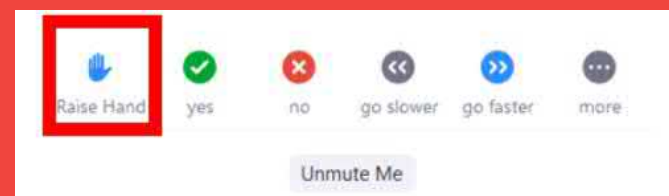


New Mexico DEPARTMENT OF
TRANSPORTATION
MOBILITY FOR EVERYONE



Questions

If you would like to speak,
raise your hand
Press *9 if you have dialed-in



Appendix C PUBLIC MEETINGS ATTENDANCE LIST

**Section omitted due to personal identifying
information**

Appendix D PUBLIC COMMENTS RECEIVED

Question	Name	Email Address	Meeting
Just wondering why the State of New Mexico cannot spend a little more money and include the four lane option through	JoAn Chesser	sssja1@valornet.com	Zoom, Meeting No. 1 – Answered Live
Jal to the Texas State line. A lot of the Staes income comes from this area	Anonymous Attendee		Zoom, Meeting No. 1 – Answered Live
these are two parts of the same question	Steven Morgenstern	steven.morgenstern@state.nm.us	Zoom, Meeting No. 1 – Answered Live
In the 4 lane option, is possible to construct two new lanes leaving the other older two lanes open during construction and then returning to the odler two lanes for rebuilding?	Bruce Ellis	bellis@roswelllumber.com	Zoom, Meeting No. 1 – Answered Live
What is a realistic timeline for this project to be completed?	Brian Snider	brian.snider@jalnm.org	Zoom, Meeting No. 1 – Answered Live
I am sorry, just not used to using this form of communication. The cost seems to be unjustified because it would be too expensive. Since so much of the State of New Mexico's income comes from this area, seems like it would be feasible to go ahead and spend the money and build 4 lanes.	Anonymous Attendee		Zoom, Meeting No. 1 – Answered Live
I think Annonymous Attendee question was second half of the question from JoAn Chesser. One question broken into two chat messages.	Steven Morgenstern	steven.morgenstern@state.nm.us	Zoom, Meeting No. 1 – Answered Live

Question	Name	Email Address	Meeting
Is it true that, in New Mexico, the design-build method may only be used on projects exceeding \$50 million dollars? Are federal matching dollars (assuming there will be a measure of federal funding) considered part of this threshold cost tally?	Cathrynn Brown	Rep.Brown@windstream.net	Zoom, Meeting No. 1 – Answered Live
Is there any benefit to separate NM 31 from NM 128 in the construction phase for funding purposes?	Bruce Ellis	bellis@roswelllumber.com	Zoom, Meeting No. 1 – Answered Live
What is the benefit to traffic of widening the lanes on 128? Is it just to give more space for oversize vehicles? How will widening the lanes make traffic flow better?	John Earp	j_earp@yahoo.com	Zoom, Meeting No. 2 – Answered Live
Will WSP provide the NM Transportation Commission the schedule of meetings planned with individual property owners within the City of Jal?	Bruce Ellis	bellis@roswelllumber.com	Zoom, Meeting No. 2 – Answered Live
When is the projected date for the beginning of the 128 project in Jal?	John Earp	j_earp@yahoo.com	Zoom, Meeting No. 2 – Answered Live
A recap of the property owners concerns would be important to know....thanks.	Bruce Ellis	bellis@roswelllumber.com	Zoom, Meeting No. 2 – Answered Live

Question	Name	Email Address	Meeting
First, I, in no way, am discontented with the NMDOT or personnel. I have the highest respect for the expertise of you guys. However, if the State DOT would do the Flush Median Alternative, it might cancel the need for a 128 Northern Relief Route. If we could have 4 lanes, just through the city limits, seems as if this would help us. It might add more to your budget, but the State of NM receives about 1/3 of it's support from Lea & Eddy Counties. Please consider this!	JoAn Chesser	sssjal@valornet.com	Zoom, Meeting No. 2 – Answered Live
Is a four lane option going to be discussed? The 3 lane option has already been decided what is going to be done?	Anonymous Attendee		Zoom, Meeting No. 2 – Answered Live
Would it be better if the northern Jal relief route were completed before widening 128 in Jal?	John Earp	j_earp@yahoo.com	Zoom, Meeting No. 2 – Answered Live

Reints, Rebecca

From: Heather Brewer <heather@hbstrategiesnm.com>
Sent: Tuesday, August 17, 2021 5:27 PM
To: Reints, Rebecca
Subject: Re: NMDOT Public Meeting Announcement - NM 31-128 Project (CN 2104330)

Thank you! We will share it with our Roads Committee and member companies.

We appreciate your keeping us in the loop.

All the best,
Heather

On Tue, Aug 17, 2021 at 11:38 AM Reints, Rebecca <Rebecca.Reints@wsp.com> wrote:

Good morning,

Please see the attached virtual public meeting notification for the NM 31-128 Roadway Project along NM 31 from US 285 to US 62 and along NM 128 from NM 31 to the NM/TX state line in Eddy and Lea Counties (CN 2104330). The meeting will take place on **Tuesday, August 31, 2021 from 6:00 to 7:30 p.m.** (Mountain Daylight Time). The public is encouraged to participate in the live video streaming using Zoom or by calling in at the scheduled meeting time. Please feel free to share the meeting announcement through your respective social media outlets. Text for posting to social media is included below. More information and registration details can be found on the NMDOT project webpage at: <https://nm31-128project.nmdotprojects.org/> or you can call into the meeting at the scheduled meeting time at: (346)-248-7799; WEBINER ID: 815 5112 8865.

We look forward to your participation! Please let me know if you have any questions.

For social media posts:

Virtual Public Meeting: The New Mexico Department of Transportation, in cooperation with the Federal Highway Administration, is in the project development stage for the NM 31-128 Roadway Project along NM 31 from US 285 to US 62 and along NM 128 from NM 31 to the NM/TX state line in Eddy and Lea counties. Community members are encouraged to register for the event and join the discussion, provide comments, and ask questions of the project team. The meeting will take place Tuesday, August 31, 2021 from 6 to 7:30 p.m. (Mountain Daylight Time). More information and registration at: <https://nm31-128project.nmdotprojects.org/> or you can call into the meeting at the scheduled meeting time at: (346)-248-7799; WEBINER ID: 815 5112 8865.

Reints, Rebecca

From: Hyre, Jennifer
Sent: Thursday, September 2, 2021 10:55 AM
To: DeWayne Chesser
Cc: Reints, Rebecca
Subject: RE: 31-128 meeting 08-31-2021

Follow Up Flag: Follow up
Flag Status: Flagged

Hello JoAn,

I'm glad you were able to attend our public meeting. Yes, the zoom communication is different if you aren't used to it. I appreciate you reaching out to me to ensure we received your input. I will share this with the Project Team.

Thank you,



Jennifer K. Hyre
Director, Environmental Planning
T+ 1 505-878-6577 | M+ 1 505-205-3168

From: DeWayne Chesser <sssjal@valornet.com>
Sent: Wednesday, September 1, 2021 5:53 PM
To: Hyre, Jennifer <Jennifer.Hyre@wsp.com>
Subject: 31-128 meeting 08-31-2021

Jennifer,

In reference to the public DOT meeting, held 08-31-2021, it was a very good presentation. I am not used to the zoom communication mode, so, I sent an unfinished message last night. Just hit enter too soon.

I would like to see the presented program brought to completion, except, we really do need a four lane 128 roadway, here in Jal. The traffic is extremely heavy on this roadway. The City of Jal is doing a feasibility study on constructing a 128 Northern Relief Route, in order to relieve the congestion on that road. If we could get a four lane highway through Jal; we might not need the relief road. This relief route is proposed to be constructed within the city limits. The Federal Highway Commission does not recognize this relief route title as valid, but rather a roadway which is constructed outside the city limits, so as to avoid having to go through the city limits.

Thank You,
JoAn Chesser

Sent from [Mail](#) for Windows

Reints, Rebecca

From: Hyre, Jennifer
Sent: Friday, June 11, 2021 10:02 AM
To: Shannon Ewing
Cc: Reints, Rebecca
Subject: RE: Status of NM 31-NM 128 Design-Build Project

Follow Up Flag: Follow up
Flag Status: Flagged

Hello Shannon,

The NMDOT always strives to incorporate context sensitive solutions into their infrastructure projects, and the NM 31-128 Roadway Project is no exception. We are early in the study phase developing alternatives and reviewing existing conditions. At this point in the project, we have yet to identify any specific design elements. The project will include work at the Pecos River bridge crossing. The project area lacks sound wall barrier as this is primarily a rural section of roadway. We appreciate your interest in the project.

Thank you,

Jennifer Hyre
Environmental Planning Manager
O: +1 505.878.6577 | M: +1 505.205.3168



From: Shannon Ewing <s.ewing@creativedesignresolutions.com>
Sent: Friday, June 11, 2021 10:55 AM
To: Hyre, Jennifer <Jennifer.Hyre@wsp.com>
Subject: Status of NM 31-NM 128 Design-Build Project

Hello,

Will the project **NM 31-NM 128 Design-Build Project** be incorporating context sensitive solutions, bridge, or sound wall designs?

Your name and email were listed on the project page's website.

Thanks,
Shannon

Shannon Ewing
Senior Marketing Manager





COMMUNICATION RECORD

Date: 11/4/2021 Time: _____

Call Received: X Call Made: _____ Left Message: _____ Call Returned: _____

Conversation with: Tim Harry
Of _____

Phone number: 432-301-6157

Project: NM 31-128
Control No. _____

Discussed: _____

Hey Jennifer, this is Tim Harry with True Chemical Solutions out of Midland, Texas. I just wanted to give you a phone call. I was told you were one of the people to reach out to you about this whole roundabout idea on NM 128 and wanted to give my feedback on this. I don't think that I've ever seen a worse idea on NM 128 with the amount of traffic that we have and the type of traffic. My staff drives that road on an everyday basis. We drive that road with everything from pickup trucks to semis to an oversized loads to pretty much whatever, but doing a roundabout and doing those at those intersections is not going to be a good idea for us. That's going to turn into a road hazard. It's going to turn into safety hazard on a road that is, I would say, that NM 128 is probably the most deadly highway in the oil field at this point in time. We're adding in a huge hazard to that and that that's going to make my insurance costs go up. It's going to make my time for my guys go up. I don't see a net positive in this situation at all. I would love to talk with you a little bit further about this. You give me a phone call back. I'd greatly appreciate it. 432-301-6157. Thank you very much.

Reints, Rebecca

From: Hyre, Jennifer
Sent: Tuesday, November 9, 2021 1:41 PM
To: Andy L
Cc: Reints, Rebecca
Subject: RE: Traffic control near jal

Follow Up Flag: Follow up
Flag Status: Flagged

Mr. Larrow,

We appreciate you taking the time to provide us with your comments on the NM 31-128 Roadway Improvements project. I will share this with the Project Team. I'm sorry to hear that you were recently involved in a head on collision. I sincerely hope you are okay. To ensure that you receive notification of future public meeting events and other project information, we will add you to our master mailing list. Feel free to review the NMDOT's website for this project: <https://nm31-128project.nmdotprojects.org/> Thank you for your interest in the project.

Have a great day,



Jennifer K. Hyre
Director, Environmental Planning
T+ 1 505-878-6577 | M+ 1 505-205-3168

From: Andy L <blackdog1999kw@gmail.com>
Sent: Sunday, November 7, 2021 7:37 AM
To: Hyre, Jennifer <Jennifer.Hyre@wsp.com>
Subject: Traffic control near jal

Ms Hyre,

15 years I've been a commercial driver. I've hauled everything. Every kind of truck. Every kind of trailer. Every kind of freight. I have well beyond a million miles under my belt. It's safe to say I know how to drive.

Having gotten the introduction out of the way, I need to give my opinion on your idea of installing traffic circles along major oilfield routes. Personally, I feel that it will only add to the carnage already on our roads. People out here simply do not know how to safely and efficiently navigate them. Additionally, we have a high enough amount of over-dimension freight moving through the area. It would be a disaster waiting to happen.

I deeply under the desire to increase safety on the roads of west Texas and eastern New Mexico. Back in may I was involved in a head on collision on highway 302, between Kermit and mentone, tx. The other driver came into my lane at a very high rate of speed. I broke both my legs. He died. Something clearly needs to be done. People are dying on these highways all too often. But a traffic circle ain't it, chief.

Regards,

Andrew B. Larrow
Owner, Highwaymen Transportation

Reints, Rebecca

From: Hyre, Jennifer
Sent: Thursday, November 4, 2021 3:10 PM
To: Brian Lilley
Cc: Reints, Rebecca
Subject: RE: CN 2104330

Follow Up Flag: Follow up
Flag Status: Flagged

Hello Brian,

We appreciate your interest in the NM 31-128 Roadway Improvements Project. Thank you for taking the time to send us your comments. I will share this with the NMDOT Project Team. We will add you to our mailing list so you will receive future communications about the project and upcoming public meeting events.

Check out of website: <https://nm31-128project.nmdotprojects.org/>

Thank you,



Jennifer K. Hyre
Director, Environmental Planning
T+ 1 505-878-6577 | M+ 1 505-205-3168

From: Brian Lilley <b_lilley@live.com>
Sent: Thursday, November 4, 2021 1:31 PM
To: Hyre, Jennifer <Jennifer.Hyre@wsp.com>
Subject: CN 2104330

Hello, I am writing as I am just hearing about the proposed changes that are in consideration or planning phase or what stage the project is in. I drive the half highway, and potash mines road everyday to go to work and I feel the proposed changes will only add more danger to these roads, adding in roundabouts on highway especially those with oilfield semi trailers loaded with materials, welding trucks, mixed in with other daily traffic is just asking for disaster. It is adding more danger and unknowns into my daily drive. I feel a better use of money would be to add either a passing lane, and or making it a four lane highway, or possibly even widening the roads. These roads see a huge amount of traffic daily and to me these proposed changes seem like a lazy and wasteful to spend tax dollars I feel if people who are proposing these changes come down and travel these roads they would have a better feel and appreciation of what workers like me experience on a daily basis. Thank you



COMMUNICATION RECORD

Date: 8/31/2021 Time: _____

Call Received: X Call Made: _____ Left Message: _____ Call Returned: x

Conversation with: Ronnie Walls

Of _____

Jal, NM

Phone number: 575-441-3276

Project: 31-128

Control No. _____

Discussed:

Wanted to know about the selected alternative for the Jal Relief Route. Told him that it is a City of Jal Project but I can add him to the NM 128/Jal meeting mailing list.

Reints, Rebecca

From: Hyre, Jennifer
Sent: Wednesday, September 15, 2021 10:24 AM
To: Casey Savoie
Cc: Ward, Terry L.; Reints, Rebecca
Subject: RE: nm31-128 project

Follow Up Flag: Follow up
Flag Status: Flagged

Good morning Casey,

I appreciate you reaching out to us. Terry Ward, WSP Project Manager, will reach out to you to schedule some time to discuss your concerns and questions.

Thank you,



Jennifer K. Hyre
Director, Environmental Planning
T+ 1 505-878-6577 | M+ 1 505-205-3168

From: Casey Savoie <dbar.cafe@yahoo.com>
Sent: Wednesday, September 15, 2021 5:18 AM
To: Hyre, Jennifer <Jennifer.Hyre@wsp.com>
Subject: nm31-128 project

Good morning,

I am the owner of D-Bar Cafe. My business is inbetween 3rd and highway 18 on 128. I have many concerns and questions about the project and would like to meet with you.

Thank you,
Casey Savoie
575-631-0965

Reints, Rebecca

From: Hyre, Jennifer
Sent: Thursday, September 2, 2021 12:15 PM
To: jschramm@earthlink.net
Cc: Ward, Terry L.; Reints, Rebecca
Subject: RE: NM31-128 Design/Build Project & Virtual Meeting

Follow Up Flag: Follow up
Flag Status: Flagged

Hi Jeff,

We appreciate your interest in the project and are glad you attended the NM 31-128 public meeting. I'd be happy to share Terry's contact information with you so that he may answer some of your design-build questions about the project. He is cc'd and his contact information is below.



Terry Ward
Project Manager

T+ 1 505-878-6533
M+ 1 505-489-6683

WSP Global Inc.
2440 Louisiana Boulevard NE, Suite 400
Albuquerque, NM 87110

wsp.com

Thank you,



Jennifer K. Hyre
Director, Environmental Planning
T+ 1 505-878-6577 | M+ 1 505-205-3168

From: Jeff Schramm <jschramm@earthlink.net>
Sent: Wednesday, September 1, 2021 12:45 PM
To: Hyre, Jennifer <Jennifer.Hyre@wsp.com>
Subject: NM31-128 Design/Build Project & Virtual Meeting

Hi Jennifer,

My name is Jeff Schramm, I am a New Mexico resident and live in Santa Fe, I attended the NM31-128 Design/Build Project & Virtual meeting last night. My interest was to learn more about the project and NM DOT design/build process. My experience includes have worked and been exposed to a number of large design/build opportunities, in

Texas, AZ and Colorado with projects values from \$1.6B to \$50M, during my tenure (former employee) at Kiewit Infrastructure Engineering on the existing conditions team and having been in Survey & Mapping for over 40 years serving in various positions and as well as owned & operated consulting firms in the US, Mexico and South America.

I have a few questions on phase I of design/build process and the actual project based on the info provided in the presentation. Would it be too much to ask, can you provide me the contact info for Mr. Ward. Feel free to pass my e-mail on him too. Thank you for your help with this!

Regards,

Jeff Schramm CP, SP

jschramm@earthlink.net

(970) 215-4980

Reints, Rebecca

From: Reints, Rebecca
Sent: Friday, August 27, 2021 8:01 AM
To: 'Ross.Shaver@pilottravelcenters.com'
Cc: Hyre, Jennifer
Subject: RE: NMDOT Public Meeting

Good morning Ross,

The direct registration link for the NM31-128 public meeting on 8/31 is located here:

https://us02web.zoom.us/webinar/register/WN_uqCwYxj-QVepmHw04t0ohQ

Let me know if you have any other questions or need any help! If you can't get the registration to work, let me know and I can register you for the event. You can also call into the meeting on the day/time of the event with this number: 1-346-248-7799, Webinar ID: 815 5112 8865 but you won't be able to see the powerpoint.

Have a good weekend!



Rebecca Reints
Environmental Planner
ENV SP

T+ 1 505-395-2191

From: Ross Shaver <Ross.Shaver@pilottravelcenters.com>
Date: August 27, 2021 at 6:08:31 AM MDT
To: "Hyre, Jennifer" <Jennifer.Hyre@wsp.com>
Subject: NMDOT Public Meeting

Good morning Jennifer,

I would like to register for the 8/31 public meeting for the attached, but could not figure out how to do so. Please provide the link to register if I need to do so. thanks

Reints, Rebecca

From: Hyre, Jennifer
Sent: Thursday, November 4, 2021 12:10 PM
To: Trisha Welch
Cc: Reints, Rebecca
Subject: RE: Roundabouts on 128 in southeastern NM

Follow Up Flag: Follow up
Flag Status: Flagged

Hello Trisha,

We appreciate your interest in the NM 31-128 Roadway Improvements Project. Thank you for taking the time to send us your comments. I will share this with the NMDOT Project Team. We will add you to our mailing list so you will receive future communications about upcoming public meeting events.

Thank you,
Jennifer K. Hyre
Director, Environmental Planning
T+ 1 505-878-6577 | M+ 1 505-205-3168

-----Original Message-----

From: Trisha Welch <geminipilotservices@gmail.com>
Sent: Thursday, November 4, 2021 11:47 AM
To: Hyre, Jennifer <Jennifer.Hyre@wsp.com>
Subject: Roundabouts on 128 in southeastern NM

Hello; I just saw a post to contact with my thoughts. As a Escort company who regularly uses 128 (6-12 times weekly) with Oversize loads extending 100 feet; roundabouts would cause EXTREME traffic congestion while we navigate them.

128 would be much better suited with some passing lanes just as 285 has done.

Trisha Welch
(432)924-5248

Reints, Rebecca

From: Hyre, Jennifer
Sent: Thursday, November 4, 2021 11:53 AM
To: frankyu228@gmail.com
Cc: Reints, Rebecca
Subject: public meeting and project information - NMDOT NM 14 Cerrillos Road Improvements

Follow Up Flag: Follow up
Flag Status: Flagged

Hi Frank,

I appreciate you calling yesterday to inquire about the NMDOT Cerrillos Road Improvements Project. As I mentioned, we will add you to our mailing list to ensure you receive a notice of the next public meeting. The NMDOT has created a website with project information for the public to view (<https://nm14cerrillos.nmdotprojects.org/>). Please feel free to watch the recording of our July 2021 public meeting presentation: <https://www.youtube.com/watch?v=LOeJ0bn6qB4> After you review the information, feel free to contact me if you have any questions. We appreciate your interest in the project!

Thank you,



Jennifer K. Hyre

Director, Environmental Planning

T: + 1 505. 878. 6577 | M: + 1 505. 205. 3168

WSP USA | 2440 Louisiana Blvd. NE, Ste 400 | Albuquerque, NM 87110

Reints, Rebecca

From: Ward, Terry L.
Sent: Wednesday, November 17, 2021 8:48 AM
To: Ashley Mayfield
Cc: Reints, Rebecca; Hyre, Jennifer
Subject: RE: 128/31 STUDY COMMENTARY

Ashley:

The NM 404-213 RAB is a single lane roundabout and would not be an “apples to apples” comparison to the multi-lane RABs being proposed on NM 31-128. Still interested in crash data or does this information suffice?



Terry Ward
Project Manager

T+ 1 505-878-6533
M+ 1 505-489-6683

WSP Global Inc.
2440 Louisiana Boulevard NE, Suite 400
Albuquerque, NM 87110

wsp.com

From: Ward, Terry L. <Terry.Ward@wsp.com>
Sent: Wednesday, November 10, 2021 1:13 PM
To: Ashley Mayfield <Ashley_Mayfield@eogresources.com>
Cc: Reints, Rebecca <Rebecca.Reints@wsp.com>; Hyre, Jennifer <Jennifer.Hyre@wsp.com>
Subject: RE: 128/31 STUDY COMMENTARY

Ashley:

Our public meeting presentation has much more traffic information for both NM 31 and NM 128 and can be found here:

https://www.nmdotprojects.org/wp-content/uploads/2021/09/CN-2104330_NM-31-128_presentation_08-31-21_REDUCED.pdf

In regards to the Chapparal, NM roundabout we do not have that data and will need to check with NMDOT to see if they do.

In regards to other intersection alternatives, two-way stop-controlled and traffic signals were also considered as you can see from the presentation materials.

Thank you for your continued interest in the NM 31-128 project.

Terry Ward



Project Manager

T+ 1 505-878-6533

M+ 1 505-489-6683

WSP Global Inc.
2440 Louisiana Boulevard NE, Suite 400
Albuquerque, NM 87110

wsp.com

From: Ashley Mayfield <Ashley_Mayfield@eogresources.com>

Sent: Wednesday, November 10, 2021 12:47 PM

To: Ward, Terry L. <Terry.Ward@wsp.com>

Subject: FW: 128/31 STUDY COMMENTARY

Terry,

Can you provide the same crash data for the 31 corridor as you have on 128? I'd like to compare that to the 128 corridor. Also, I have learned that there is a RAB in Chapparral NM at the 213 and 404 intersection. Can you find out and share the size data of that RAB that is already in use? If you have the volume of traffic data, pre-installation crash data and the post installation crash data, I am interested in seeing that too.

My last question, aside from the RCUT, High-T and RAB, what other options have been evaluated?

Thank you for your time.

Ashley Mayfield

Sr. Safety and Environmental Specialist



eogresources | 5509 Champions Drive | Midland, Tx 79706
Main Office (432) 686-3600 | Direct (432) 686-3662 | Cell (432) 258-7998
Ashley_Mayfield@eogresources.com | www.eogresources.com

From: John Ratliff <John.Ratliff@transgloballlc.com>

Sent: Thursday, November 4, 2021 3:47 PM

To: Ashley Mayfield <Ashley_Mayfield@eogresources.com>

Cc: Ward, Terry L. <terry.ward@wsp.com>

Subject: RE: 128/31 STUDY COMMENTARY

CAUTION: This email originated from outside of the organization. Do not click links or open attachments unless you recognize the sender and know the content is safe.

Ashley,

They can be emailed to Terry Ward. Here is his address: terry.ward@wsp.com

Thanks,



John Ratliff
Chief Executive Officer

Direct Line: (432) 218-5540

Mobile: (817) 455-6440

Office: 201 West Wall St. Ste 325, Midland, TX 79701



CAUTION: This transmission, including any attachments, is for the sole use of the intended recipients and contains information from Transglobal Services LLC that may be privileged and confidential. If you are not the intended recipient, or the person responsible for delivering this information to the intended recipient, please notify the sender immediately and delete the original transmission. If you are not the intended recipient, you are hereby notified that any disclosure, copying, printing, distribution, or other use of any of the information contained in or attached to this transmission is strictly prohibited.

From: Ashley Mayfield <Ashley_Mayfield@eogresources.com>

Sent: Thursday, November 4, 2021 11:10 AM

To: John Ratliff <John.Ratliff@transgloballlc.com>

Subject: 128/31 STUDY COMMENTARY

CAUTION: This email originated from outside of Transglobal Services LLC. Do not click links or open attachments unless you recognize the sender and know that the content is safe.

John,

Where should the general public who navigate this corridor send their commentary?

Ashley Mayfield

Sr. Safety and Environmental Specialist



eog resources | 5509 Champions Drive | Midland, Tx 79706

Main Office [\(432\) 686-3600](tel:(432)686-3600) | Direct (432) 686-3662 | Cell (432) 258-7998

Ashley_Mayfield@eogresources.com | www.eogresources.com

Reints, Rebecca

From: Hyre, Jennifer
Sent: Monday, October 4, 2021 1:18 PM
To: DeWayne Chesser
Cc: Reints, Rebecca
Subject: RE: State Roads 128/31

Follow Up Flag: Follow up
Flag Status: Flagged

JoAn and DeWayne,

We appreciate your interest in the NM 31-128 project and are happy to receive your input. Please encourage those whom you've interviewed to share their thoughts and input with us. I will share your comments with the project team. Have a great day.

Thank you,



Jennifer K. Hyre
Director, Environmental Planning
T+ 1 505-878-6577 | M+ 1 505-205-3168

From: DeWayne Chesser <sssjal@valornet.com>
Sent: Friday, October 1, 2021 9:28 PM
To: Hyre, Jennifer <Jennifer.Hyre@wsp.com>
Subject: State Roads 128/31

Jennifer Hyre:

Thank you for allowing me this avenue of comment to the NMDOT.

My comment comes from interviewing and talking to truck drivers, businesses, and individuals, living and working near State road 128. Also, from the knowledge derived from your great presentation on this project, there seems to be 100' of ROW for the roadway all the way through the city limits of Jal.

Although, it would cost a little more money, it seems that the persons, to whom I have talked, most agree that a **4 lane road, with 2 lanes to the East, and 2 lanes to the west, with a flush median would expedite the traffic through the city limits.** The 2 lanes with a left turn median is the same design we, now, have. It is not working.

Please consider this. We are in desperate need, as 128 has deteriorated to the point it's almost to the caliche bed.

Thank You, JoAn Chesser
DeWayne Chesser

Reints, Rebecca

From: Hyre, Jennifer
Sent: Wednesday, September 15, 2021 9:08 AM
To: John Earp
Cc: Reints, Rebecca
Subject: RE: NM128 Jal Project

Follow Up Flag: Follow up
Flag Status: Flagged

Hi John,

I appreciate you joining us last night and participating. I just shared a DropBox link to the video recording from the August 31 meeting. I hope this will be helpful. Let me know if you need additional information.

Thank you,
Jennifer K. Hyre
Director, Environmental Planning
T+ 1 505-878-6577

-----Original Message-----

From: John Earp <j_earp@yahoo.com>
Sent: Tuesday, September 14, 2021 7:03 PM
To: Hyre, Jennifer <Jennifer.Hyre@wsp.com>
Subject: NM128 Jal Project

Hi Jennifer,

I work for The Jal Record, the local paper in Jal. In tonight's meeting, I thought I heard you mention something about a transcript of the NM31/128 online meeting. If there is a transcript, may I have a copy via email?

Thank you ever so much,

John Earp

Reints, Rebecca

From: Reints, Rebecca
Sent: Wednesday, August 25, 2021 7:44 AM
To: DeWayne Chesser
Cc: Hyre, Jennifer; Ward, Terry L.
Subject: RE: NMDOT 31-128 Jal Public Meeting - September 14, 2021 (CN 2104330)

Good morning JoAn,

The Jal Relief Route is a project that's being led by the City of Jal and a different consulting firm. I did a little bit of digging through the Jal website and found their meeting notification, which includes the contact for submitting public comments.

http://reliefroute.cityofjal.us/wp-content/uploads/2021/08/JalReliefRoute_NewspaperAd_8.23.21.pdf

I will leave you on our mailing list for the NM 31-128 Jal Public Meeting project so you will still get a meeting notification next week for the Jal meeting that will be held on September 14th. Let me know if you want me to remove you from that list.

Have a good week!
Rebecca



Rebecca Reints
Environmental Planner
ENV SP

T+ 1 505-395-2191

From: DeWayne Chesser <sssja1@valornet.com>
Sent: Friday, August 20, 2021 10:21 PM
To: Reints, Rebecca <Rebecca.Reints@wsp.com>
Subject: RE: NMDOT 31-128 Jal Public Meeting - September 14, 2021 (CN 2104330)

Rebecca,

Thank you for the information on the public meetings of the NMDOT. I remain a very interested party to these particular meetings, as it certainly affects quite a lot of the people who reside on Ocho Road in Jal, NM.

I have the hope that the City of Jal would reconsider and place the 128 Northern Relief Road a little farther north of the planned relief route, farther north to where there is only one homestead, instead of 96.

Kindest Regards,
JoAn Chesser
575-395-2588

Sent from [Mail](#) for Windows

From: [Reints, Rebecca](#)
Sent: Wednesday, August 18, 2021 1:49 PM
To: ssjal@valornet.com
Cc: [Hyre, Jennifer](#)
Subject: NMDOT 31-128 Jal Public Meeting - September 14, 2021 (CN 2104330)

Hi Joann,

I just left you a voicemail but wanted to follow up with an email as well. I have added you to the mailing list for the NMDOT 31-128 project and you will be receiving an email notification from me at the end of August with registration information for the Jal Public Meeting that will be occurring on **September 14th**. This meeting will be over Zoom and will have the option for live-streaming or call-in. This meeting is open to the public but is advertised specifically for the city of Jal.

Additionally, if you're interested, we will be hosting a public meeting on August 31st from 6-7:30pm MDT that will be focused more on the whole project corridor, but still have similar information to the Jal meeting. I have included the registration information in the attachment.

You can find more information about the project on the NMDOT Project page at: <https://nm31-128project.nmdotprojects.org/>

Let me know if you have any questions!



Rebecca Reints

Environmental Planner
ENV SP

T+ 1 505-395-2191

WSP USA Inc.
2440 Louisiana Blvd NE, Suite 400
Albuquerque, NM 87110

wsp.com

NOTICE: This communication and any attachments ("this message") may contain information which is privileged, confidential, proprietary or otherwise subject to restricted disclosure under applicable law. This message is for the sole use of the intended recipient(s). Any unauthorized use, disclosure, viewing, copying, alteration, dissemination or distribution of, or reliance on, this message is strictly prohibited. If you have received this message in error, or you are not an authorized or intended recipient, please notify the sender immediately by replying to this message, delete this message and all copies from your e-mail system and destroy any printed copies.

-LAEmHhHzdJzBITWfa4Hgs7pbKl