



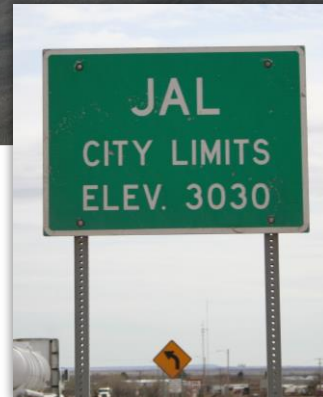
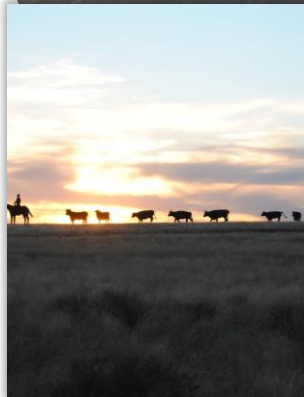
New Mexico DEPARTMENT OF  
**TRANSPORTATION**  
MOBILITY FOR EVERYONE



**City of Jal**  
**Virtual Public Information**  
**Meeting #2**

**NM 31-128**  
**Alignment Study and**  
**Design-Build Project**  
**CN 2104330**

May 24, 2022



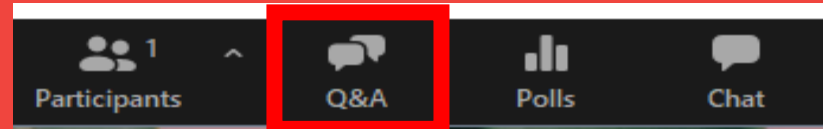
# Meeting Platform: Zoom

- ▲ Zoom Webinar – only presenters will be on video
- ▲ This meeting is being recorded
- ▲ For Spanish translation, select the Interpretation icon on your Zoom toolbar; select “Spanish”
- ▲ *Para escuchar la presentación en español, seleccione el ícono de Interpretación en la barra de herramientas de Zoom; seleccione “Spanish”*

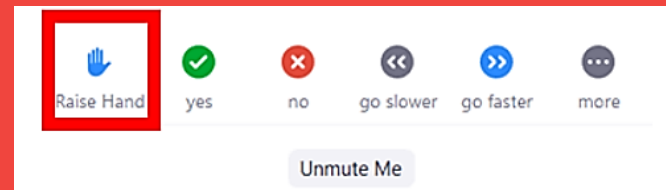


# Meeting Platform: Zoom (Cont.)

- Questions & Answers – Please add project-related questions in the Q&A dialogue box



- During Q&A, if you would like to speak, raise your hand (\*9 if you have dialed-in)*





# Presenters

## ▲ New Mexico Department of Transportation (NMDOT) Team Presenters:

- **Francisco Sanchez**, NMDOT District 2 District Engineer
- **Michael Smelker**, NMDOT Project Development Engineer
- **Matt White**, Jal City Manager
- **Terry Ward**, WSP Project Manager
- **Jennifer Hyre**, WSP Environmental Planner



# Agenda – NM 128 Jal Improvements



## ▲ Presentation Topics:

1. Brief Background
2. NMDOT Project Development Process – *Where We Are At*
3. Previous Public Meeting and Stakeholder Outreach - *Recap*
4. Preliminary Recommendations
5. Detailed Analysis
6. Environmental, Right-of-Way, and Cost
7. Jal Construction Maintenance of Traffic
8. Design-Build Procurement – Phase I and Project Phasing
9. Schedule and Next Steps

## ▲ Questions



New Mexico DEPARTMENT OF  
**TRANSPORTATION**  
MOBILITY FOR EVERYONE

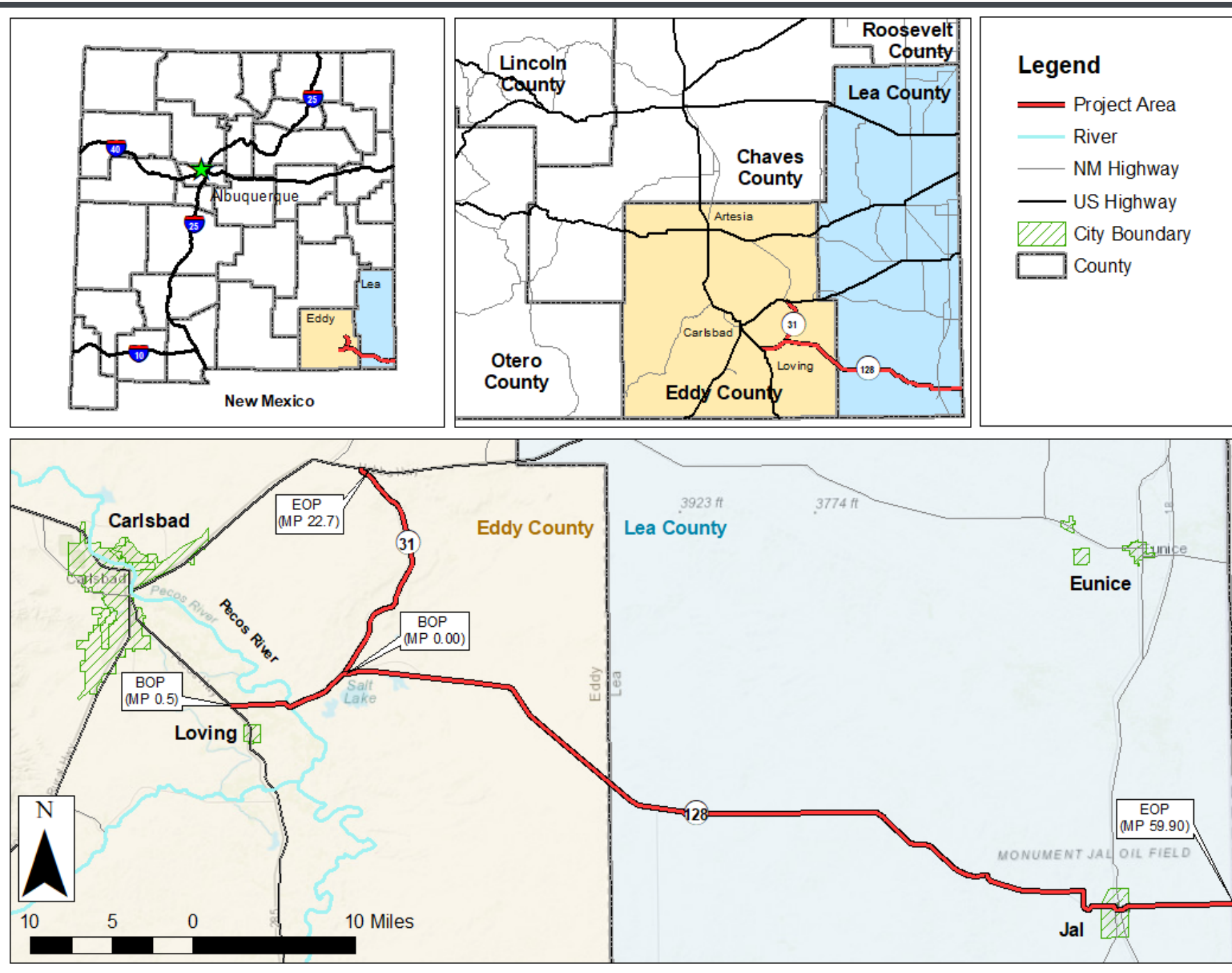


# Brief Background



# Location Map

**NM 31 - 22.2 miles**  
**NM 128 - 59.9 miles**



# Project Website

- ▲ **Project Information:** <https://nm31-128project.nmdotprojects.org>
  - This presentation and recording of tonight's public event will be posted here, as well as previous public meetings and project documents







New Mexico DEPARTMENT OF  
**TRANSPORTATION**  
MOBILITY FOR EVERYONE



# NMDOT Project Development Process *Where We Are At*

# Project Development Process

## ▲ Phase I

» **Currently close to the end of Phase IA/B Study**

## » Phase II

» *Final Design*

## » Phase III

» *Construction*

## Phase IA/B: Alignment Study

- » *Establish Why Improvements are Needed and Preliminary Alternatives*
- » *Evaluate Alternatives and Identify Preliminary Recommendations*

## Phase IC: Environmental Processing

- » *Environmental Investigations*
- » *Obtain Authorization to Construct Improvements*

## Phase ID: Preliminary Design

- » *Preliminary Engineering*
- » *Define Right-of-Way Needs*
- » *Prepare Engineering Cost Estimate*

**Stakeholder and Public Involvement**  
– Ongoing throughout Phase I





# NM 31/NM 128 Phase I-A/B Alignment Study

NM 31: MP 0.5 to MP 22.67 | NM 128: MP 0.0 to MP 59.90

CN 2104330 | DECEMBER 2021



**Parametrix**

IN ASSOCIATION WITH:

COLLIERS ENGINEERING AND DESIGN; SOUDER, MILLER, AND ASSOCIATES; SWCA; T2 UTILITY ENGINEERS; AND WOOD







# Previous Project Public Meetings and Stakeholder Outreach - *Recap*



# City of Jal

September 14, 2021

Existing Conditions

Challenges

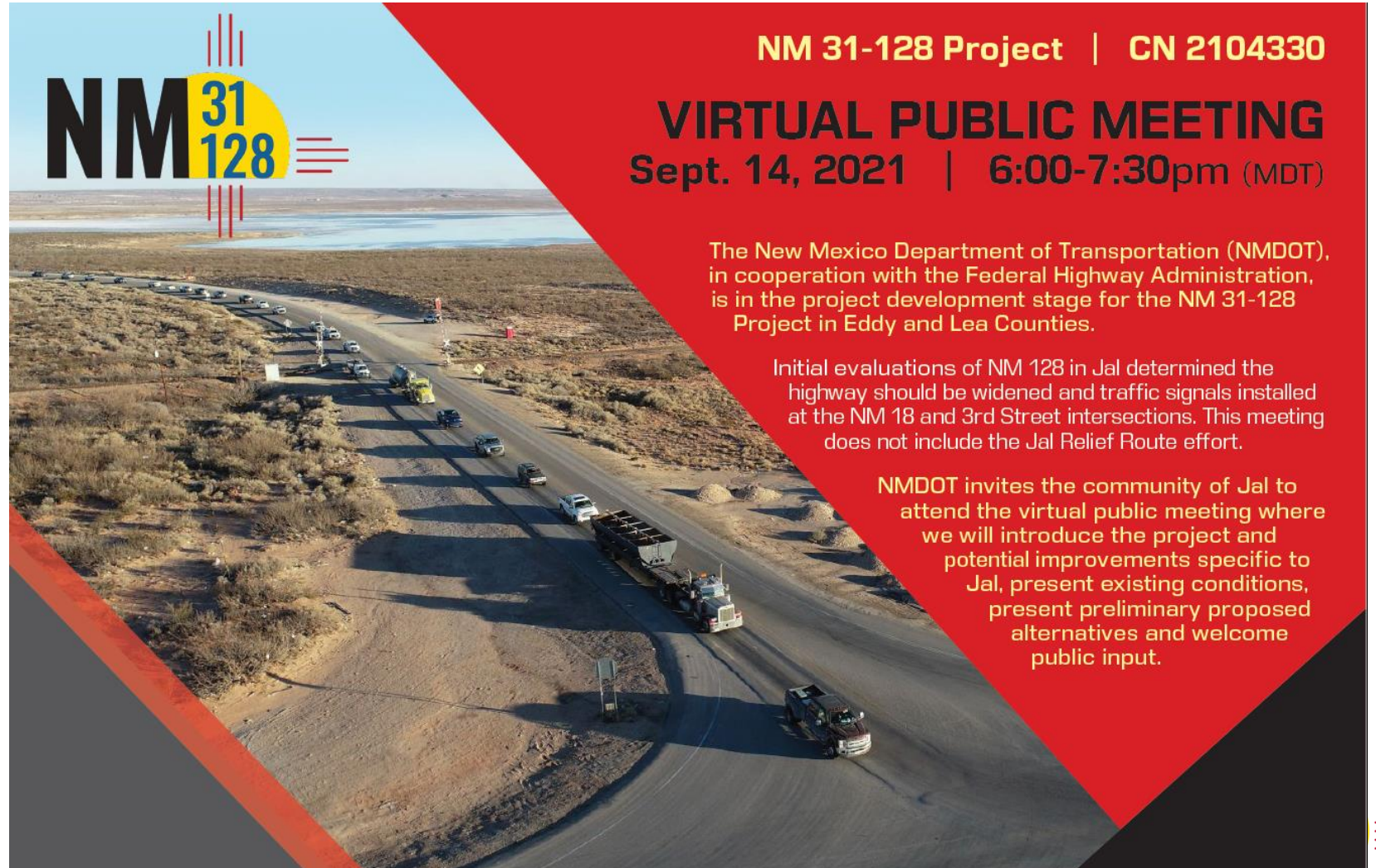
Alternative  
Identification

Screening

Preliminary  
Alternatives

## ▲ Jal Public Meeting #1

» *Questions about how the proposed NM 128 improvements will improve traffic conditions in Jal*



**NM 31-128 Project | CN 2104330**

### VIRTUAL PUBLIC MEETING

**Sept. 14, 2021 | 6:00-7:30pm (MDT)**

The New Mexico Department of Transportation (NMDOT), in cooperation with the Federal Highway Administration, is in the project development stage for the NM 31-128 Project in Eddy and Lea Counties.

Initial evaluations of NM 128 in Jal determined the highway should be widened and traffic signals installed at the NM 18 and 3rd Street intersections. This meeting does not include the Jal Relief Route effort.

NMDOT invites the community of Jal to attend the virtual public meeting where we will introduce the project and potential improvements specific to Jal, present existing conditions, present preliminary proposed alternatives and welcome public input.

# Stakeholders

We've spoken with all of them



- ▲ Eddy and Lea County
- ▲ City of Jal
- ▲ City of Carlsbad
- ▲ Bureau of Land Management (BLM)
- ▲ State Land Office (SLO)
- ▲ Oil & Gas Industry
- ▲ Waste Isolation Pilot Plant (WIPP)
- ▲ Mosaic and Intrepid Potash
- ▲ United Salt Corporation
- ▲ Burlington Northern RR
- ▲ Texas New Mexico RR
- ▲ TxDOT
- ▲ FHWA







# Preliminary Recommendations

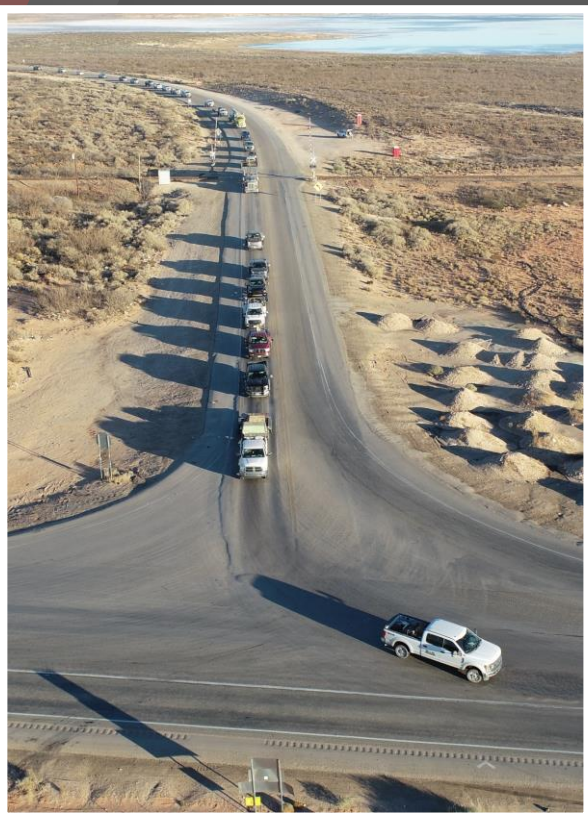
# Project Purpose

- ▲ The project's purpose is **to improve NM 31 and NM 128 to mitigate problems with highway safety, traffic capacity and congestion, and condition of the roadway and related infrastructure.**





# Project Need



## ▲ Traffic Safety

- » **722 crashes** occurred on NM 31 and NM 128 for the six-year period **between 2014 and 2019**
  - **28%** of all crashes resulted in fatalities and injuries
  - **27** fatal crashes occurred
  - Primary crash types include **rear-end, head-on, over-turn, and right-angle crashes**
- » Crash types are indicative of **inadequate safe passing areas, conflicts at intersections, lack of turn lanes, and narrow shoulders**

## ▲ Jal Traffic Congestion and Pavement Condition

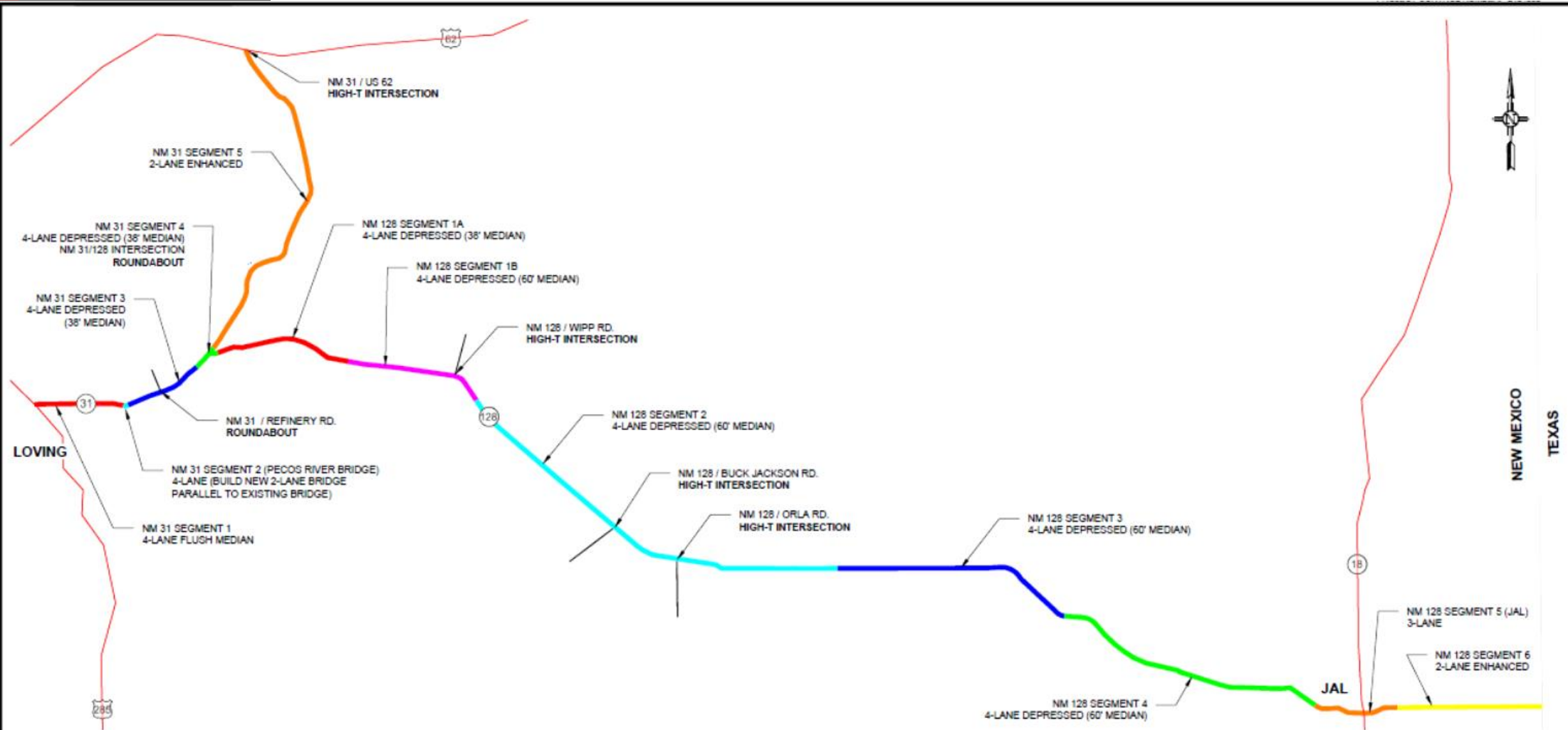


# Overall Preliminary Recommendations Overview



Preliminary  
Recommendations

# Overview Map



NM 31 CORRIDOR				
SEGMENT	MILEPOST	TYPICAL SECTION	KEY FEATURES	
1	0.5 TO 3.7	4-LANE FLUSH MEDIAN		
2	3.7	4-LANE	PECOS RIVER BRIDGE: BUILD NEW 2-LANE BRIDGE PARALLEL TO EXISTING BRIDGE	
3	3.7 TO 7.0	4-LANE DEPRESSED (38' MEDIAN)	NM 31/REFINERY RD. INTERSECTION: <b>ROUNDABOUT</b>	
4	7.0 TO 8.0	4-LANE DEPRESSED (38' MEDIAN)	NM 31/NM 128 INTERSECTION: <b>ROUNDABOUT</b>	
5	8.0 TO 22.7	2-LANE ENHANCED	2-LANE ENHANCED NORTH OF NM 128 INTERSECTION. NM 31/US 62 INTERSECTION: <b>HIGH-T</b>	

NM 128 CORRIDOR				
SEGMENT	MILEPOST	TYPICAL SECTION	KEY FEATURES	
1A	0.5 TO 6.4	4-LANE DEPRESSED (38' MEDIAN)		
1B	6.4 TO 11.8	4-LANE DEPRESSED (60' MEDIAN)	NM 128/WIPP RD. INTERSECTION: <b>HIGH-T</b>	
2	11.8 TO 28.8	4-LANE DEPRESSED (60' MEDIAN)	NM 128/BUCK JACKSON & NM 128/ORLA RD. INTERSECTIONS: <b>HIGH-T</b>	
3	28.8 TO 38.8	4-LANE DEPRESSED (60' MEDIAN)		
4	38.8 TO 50.5	4-LANE DEPRESSED (60' MEDIAN)		
5	50.5 TO 53.5	3-LANE		
6	53.5 TO 59.9	2-LANE ENHANCED		

PRELIMINARY ESTIMATED PROPOSED R/W IMPACTS (ACRES) *				
	BLM	SLO	PRIVATE	TOTAL
NM 31	65	15	20	100
NM 128	80	25	60	165
TOTAL	145	40	80	265

\* DOES NOT INCLUDE TCPs or CMEs

LEGEND	
	N.M. HIGHWAY
	STATE BORDER

NO.	DESCRIPTION	DATE	BY
4			
3			
2			
1			

REVISIONS (OR CHANGE NOTICES)	
NEW MEXICO DEPARTMENT OF TRANSPORTATION	
NM 31-128	
CN 2104330	
PHASE 1AB STUDY	
OVERVIEW MAP	





# City of Jal Preliminary Recommendations



# Proposed Mainline Alternatives

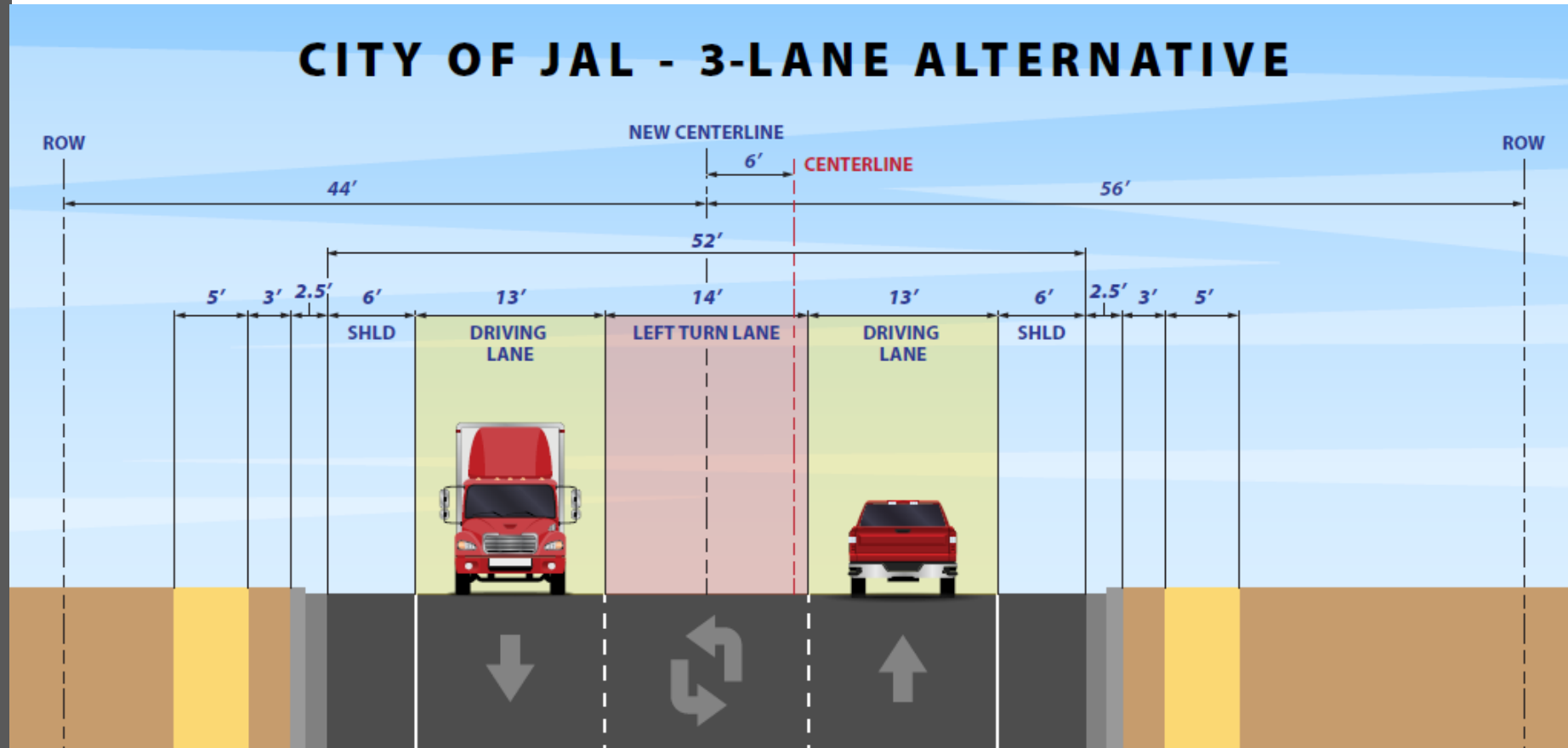
## 3-Lane TWLTL Alternative

### ▲ Jal NM 128 Alternatives

The No Build will  
also be considered

### ▲ Jal NM 128 Alternatives

- » 3-Lane – Two-Way Left Turn Lane (TWLTL)
  - Matches existing, except wider
- » 4-Lane – Screened out
- » 5-Lane – Screened out



# Proposed NM 128 Alternatives in Jal

## 3-Lane TWLTL Alternative



- ▲ Improvements include new Signal Systems at:
  - » NM 128-3<sup>rd</sup> Street
  - » NM 128-NM 18 Intersection
  - » In-Person and Virtual Meetings with Project Team for NM 128 abutting property owners have been offered and conducted





# Proposed NM 128

## JAL 3-Lane TWLTL Alternative



### ▲ Review of Project Layout in Jal





New Mexico DEPARTMENT OF  
**TRANSPORTATION**  
MOBILITY FOR EVERYONE



# Detailed Analysis



# Preliminary Recommendations

## Detailed Analysis

- ▲ Design Year 2041
- ▲ Focused on Traffic Operations and Traffic Safety from Purpose and Need as the predominate analysis criteria





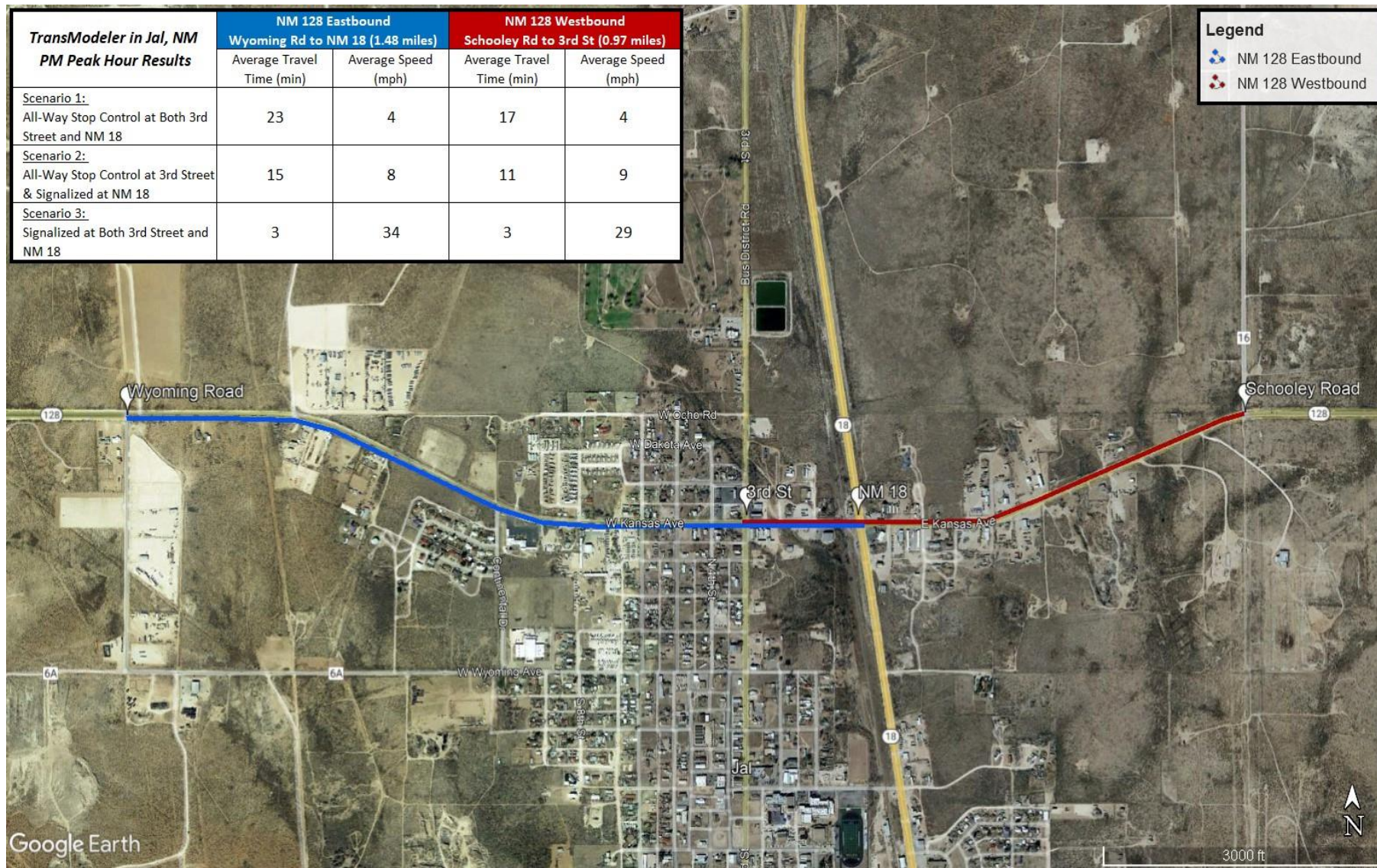
# Preliminary Recommendations

## Detailed Analysis



City of Jal Traffic Transmodeler results posted on Project Website:

▲ <https://nm31-128project.nmdotprojects.org/>





# Environmental, Right-of-Way and Cost



# Preliminary Recommendations

## Environmental



### ▲ Communities and Land Use

- » Portion of NM 128 through City of Jal is developed
  - Residential housing and businesses serve the extraction industries and local community
  - No residential or business relocations are expected
- » Overall land use would not be impacted.
- » Additional analysis will be conducted as part of the environmental documentation phase

### ▲ Natural Resources

- » NM 128 corridor in Jal is an urban environment.
- » No waterways or wetlands
- » No critical habitat for threatened and endangered species within the study area



# Preliminary Recommendations

## Environmental



## ▲ Cultural Resources

- » NM 128 in the Jal area has sensitive archaeological / historic sites
  - A few are eligible for listing on the National Register of Historic Places
- » A data recovery plan will be developed and implemented, in consultation with the SHPO, the State Land Office, and BLM in order to mitigate impacts to archeological and historic resources.

# Estimated Cost



City of Jal is  
Segment 5



## Estimated Construction Costs for NM 128

Description	Segment 1: MP 0.5 to 11.8	Segment 2: MP 11.8 to 28.8	Segment 3: MP 28.8 to 38.8	Segment 4: MP 38.8 to 50.7	Segment 5: MP 50.7 to 53.9	Segment 6: MP 53.9 to 59.9
Roadway Elements (includes lighting and RR Crossings)	\$51,451,589	\$60,669,027	\$44,887,723	\$51,452,483	\$18,684,076	\$15,214,937
Drainage	\$3,969,013	\$3,476,339	\$1,613,415	\$4,563,476	\$4,761,510	\$569,415
Bridges	0	0	- 0	- 0	- 0	- 0
Major Items Subtotal	\$55,420,601	\$64,145,366	\$46,501,138	\$56,015,959	\$23,445,586	\$15,784,352
Contingency and Cost Escalation (6%)	\$3,325,236	\$3,848,722	\$2,790,068	\$3,360,958	\$1,406,735	\$947,061
Construction Subtotal	\$58,745,837	\$67,994,088	\$49,291,207	\$59,376,917	\$24,852,321	\$16,731,413
Engineering (8% of construction subtotal)	\$4,699,667	\$5,439,527	\$3,943,297	\$4,750,153	\$1,988,186	\$1,338,513
Construction Management (10%)	\$5,874,584	\$6,799,409	\$4,929,121	\$5,937,692	\$2,485,232	\$1,673,141
Construction Total	\$69,320,088	\$80,233,024	\$58,163,624	\$70,064,762	\$29,325,738	\$19,743,068
NMGRT	\$4,086,600	\$4,530,850	\$3,161,946	\$3,811,351	\$1,886,646	\$1,069,985
Project Totals	\$73,406,688	\$84,793,874	\$61,325,570	\$73,876,113	\$31,212,384	\$20,813,052

Overall NM 128 Total: \$325 million





# Preliminary Recommendations

## Right-of-Way



City of Jal segment requires the following Right-of-Way (ROW):

Permanent ROW: 1.8 acres

Temporary Construction Permits (TCP): 3.9 acres

Construction Maintenance Easement (CME): 0.9 acres

TCPs are typical for driveway tie-ins off NMDOT ROW.

CMEs are typical for drainage structure area construction and maintenance purposes.



# Jal Construction Maintenance of Traffic



# Jal Proposed Improvements

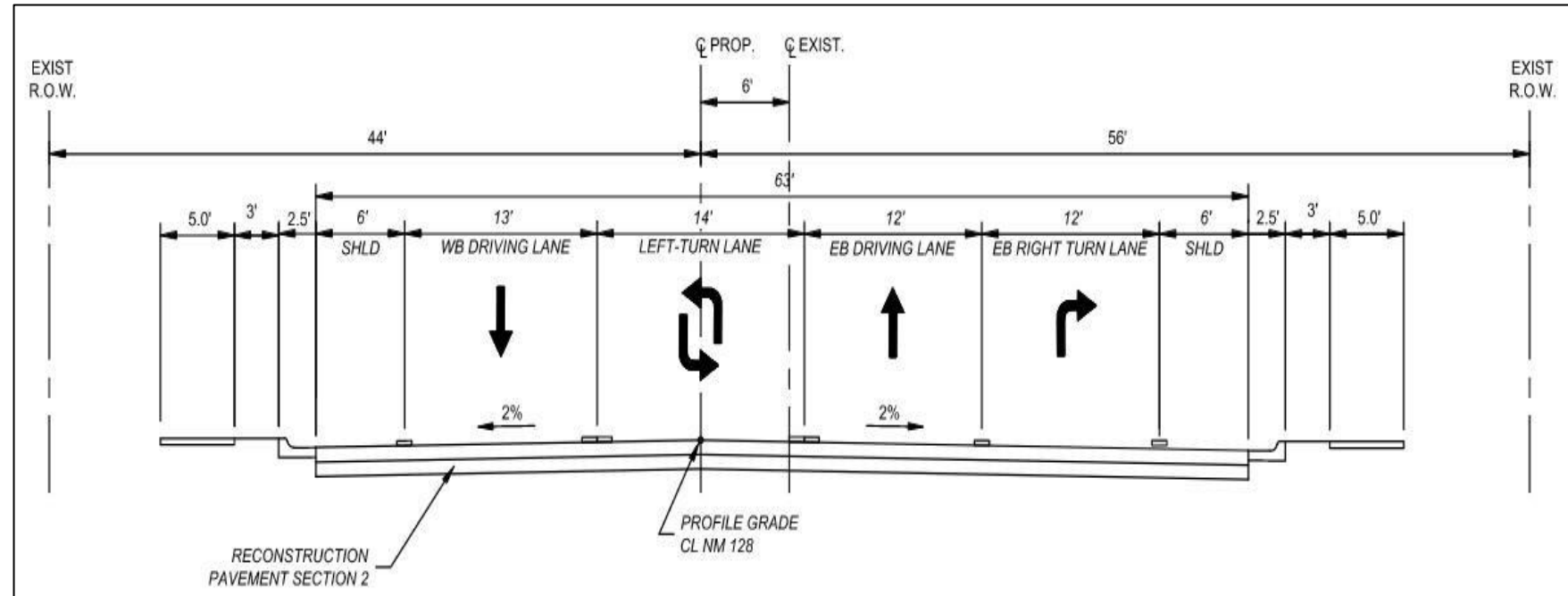
## ▲ Maintenance of Traffic During Construction

- » “Get in and Get Out” vs. “Block at a Time” approach
  - Balancing aggressive construction timeline vs. site specific access impacts
  - **We want to hear your feedback**
- » Strive to keep NM 128 open during construction, including access points
  - However, left turns across traffic to access business will likely not be allowed.
- » Coordinate closely with stakeholders and businesses
- » Contractor expected to provide look-ahead schedules and anticipate traffic impacts and have weekly meetings in Jal
- » Traffic delays during construction likely
- » The NM 128 – NM 18 and 3<sup>rd</sup> Street intersections are planned to be concrete which adds construction challenges
- » The NM 128-TX/NM RR crossing work will be challenging



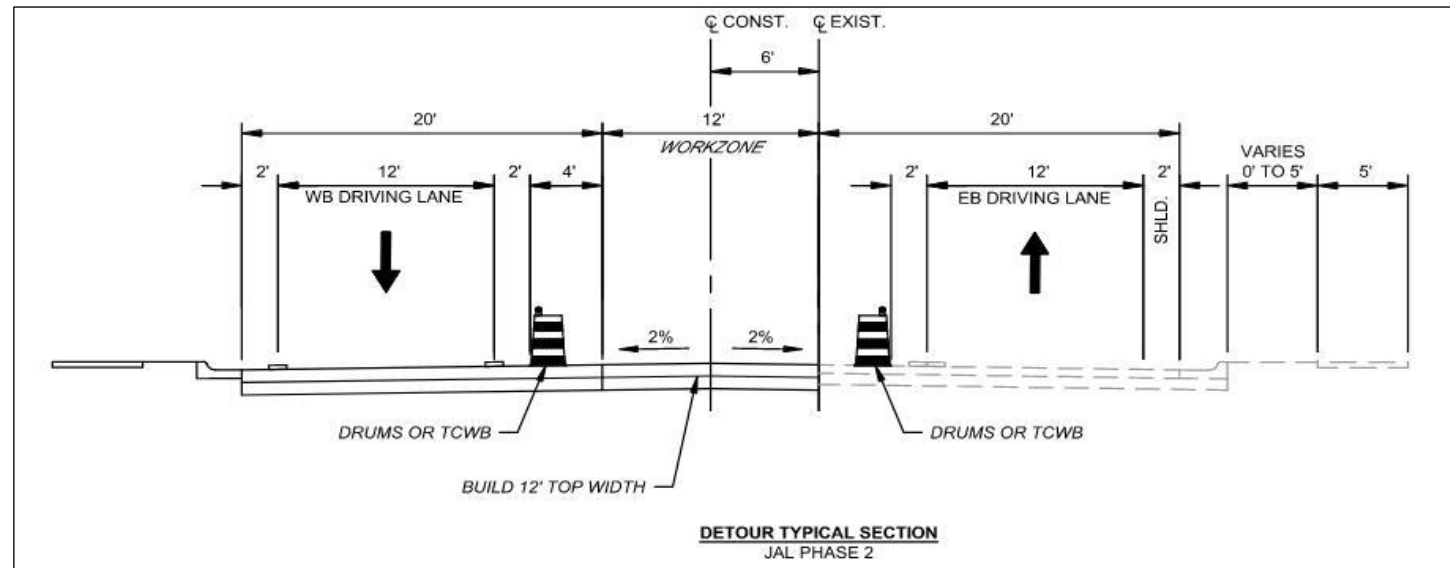
# Jal Proposed Improvements

## ▲ Maintenance of Traffic During Construction

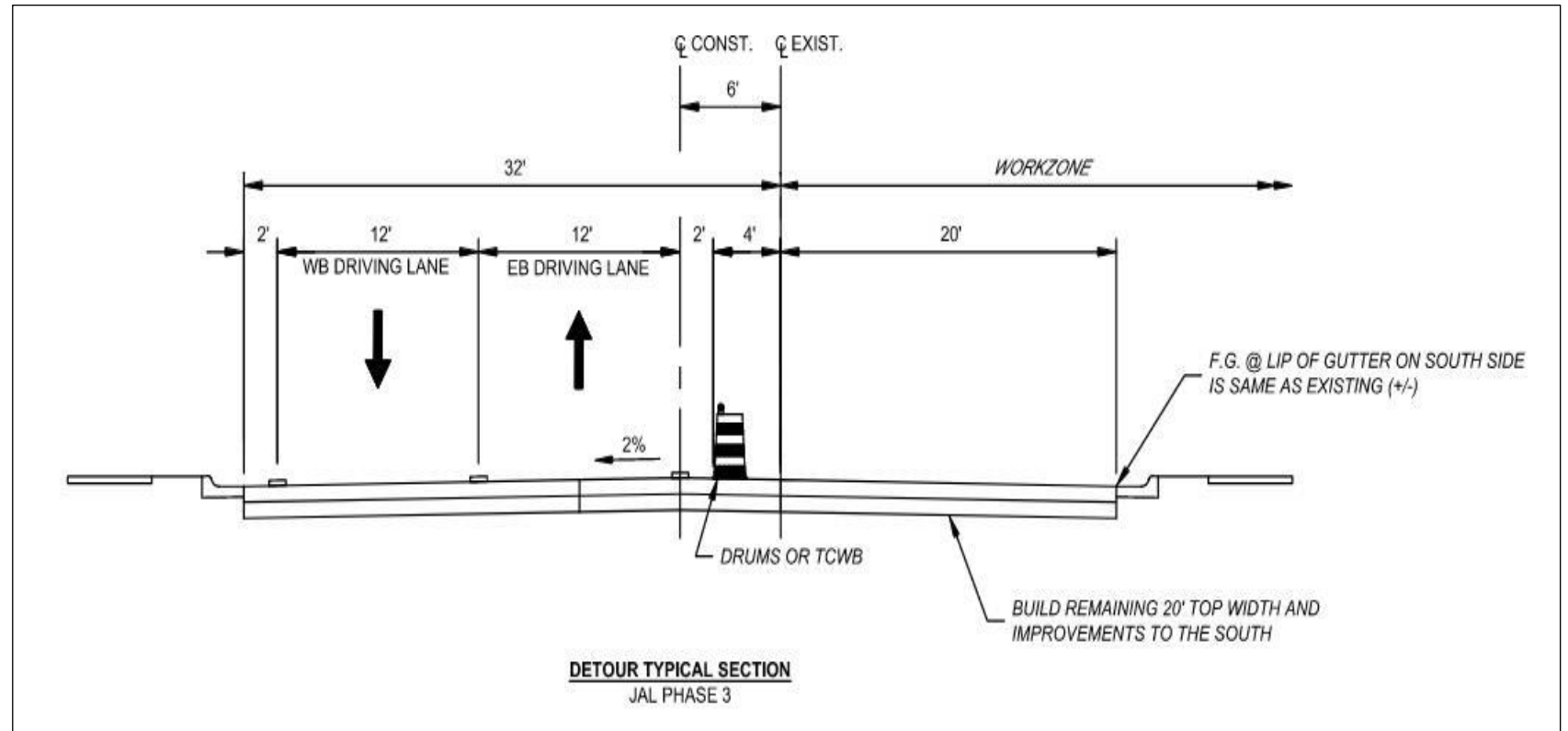




## ▲ Maintenance of Traffic During Construction



## ▲ Maintenance of Traffic During Construction

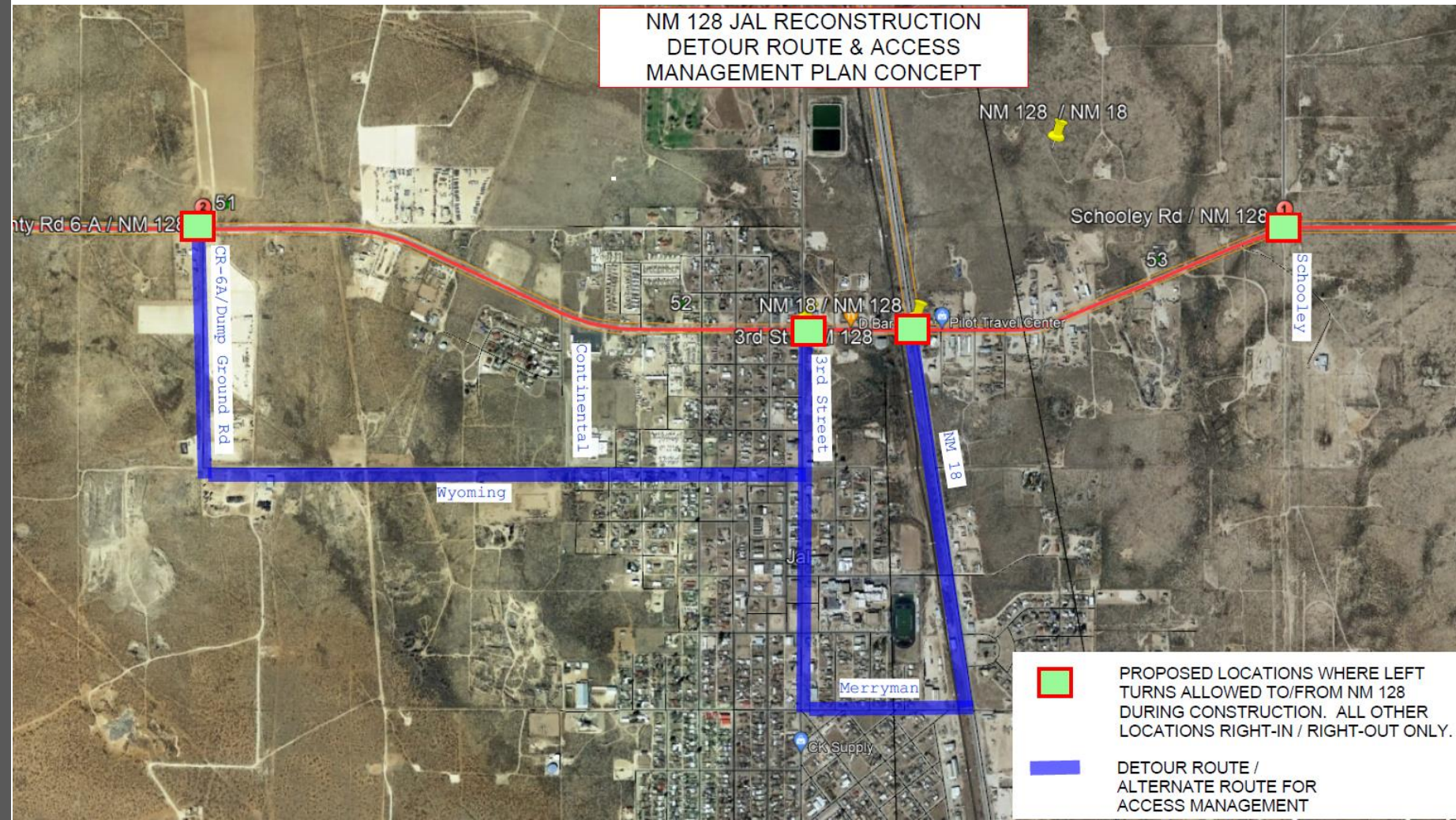




# Jal Proposed Improvements

## ▲ Maintenance of Traffic During Construction

- » Business Access Preliminary Plan
- » **We want to hear your feedback**



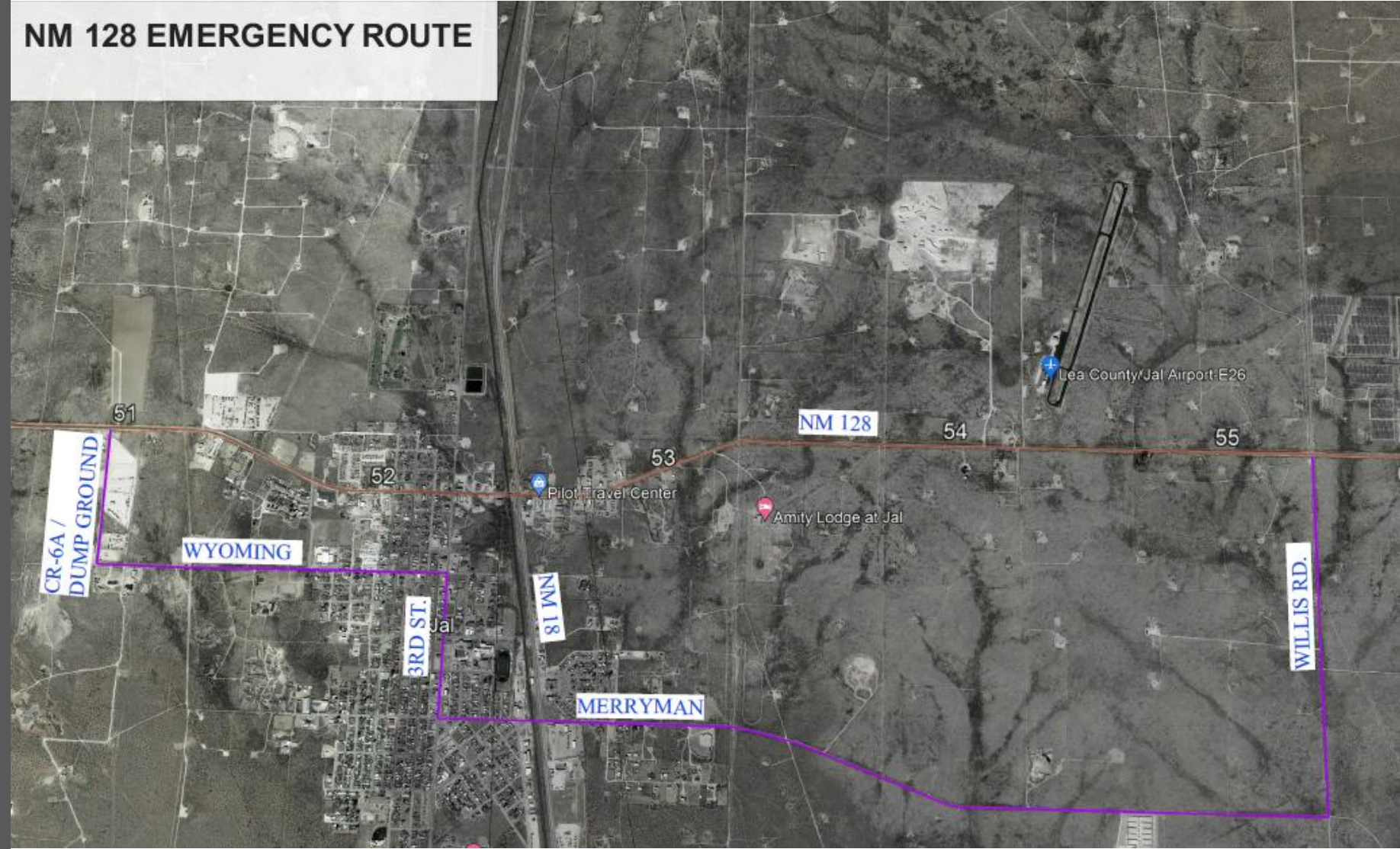


# Jal Proposed Improvements

## ▲ Maintenance of Traffic During Construction

- » Emergency and Diversionary Route
- » **We want to hear your feedback**

NM 128 EMERGENCY ROUTE





# Jal Proposed Improvements

## ▲ Maintenance of Traffic During Construction

- » Night Work and Noise
  - Heavy Equipment/ Trucks / Backup alarms
- » **We want to hear your feedback**

### Hypothetical Example

- *Night work allowed no restrictions – 10-12 months construction duration*
- *No night work allowed – 14-16 months construction duration*





# Project Delivery Method: Design-Build Procurement Phase I and Project Phasing



# Design-Build

**The Design-Build phase (Phase I) will be federally funded and consist of the following base elements:**

- ▲ Improvements to NM 31 from 0.5 miles east of U.S. 285 through the NM 128 intersection
- ▲ The NM 31-128 intersection
  - » Estimated Construction Cost: **\$70-\$80 million**



# Design-Build

**The Design-Build Phase (1st) will consist of the following add alternative elements:**

- ▲ **City of Jal Improvements**
  - » Estimated Construction Cost: **\$23-\$26 million**
- ▲ **NM 128 from NM 31 to the WIPP Road**
  - » Estimated Construction Cost: **\$50-\$55 million**
- ▲ **NM 31 and NM 128 Site Safety Improvements**
  - » Estimated Construction Cost: **\$2-\$20 million**
- ▲ **Added into Design-Build Contract or as Deferred Work to the Design Build Agreement, if funding is secured.**





# Design-Build

## ▲ Spot Safety Improvement Preliminary Recommendations

### » NM 31

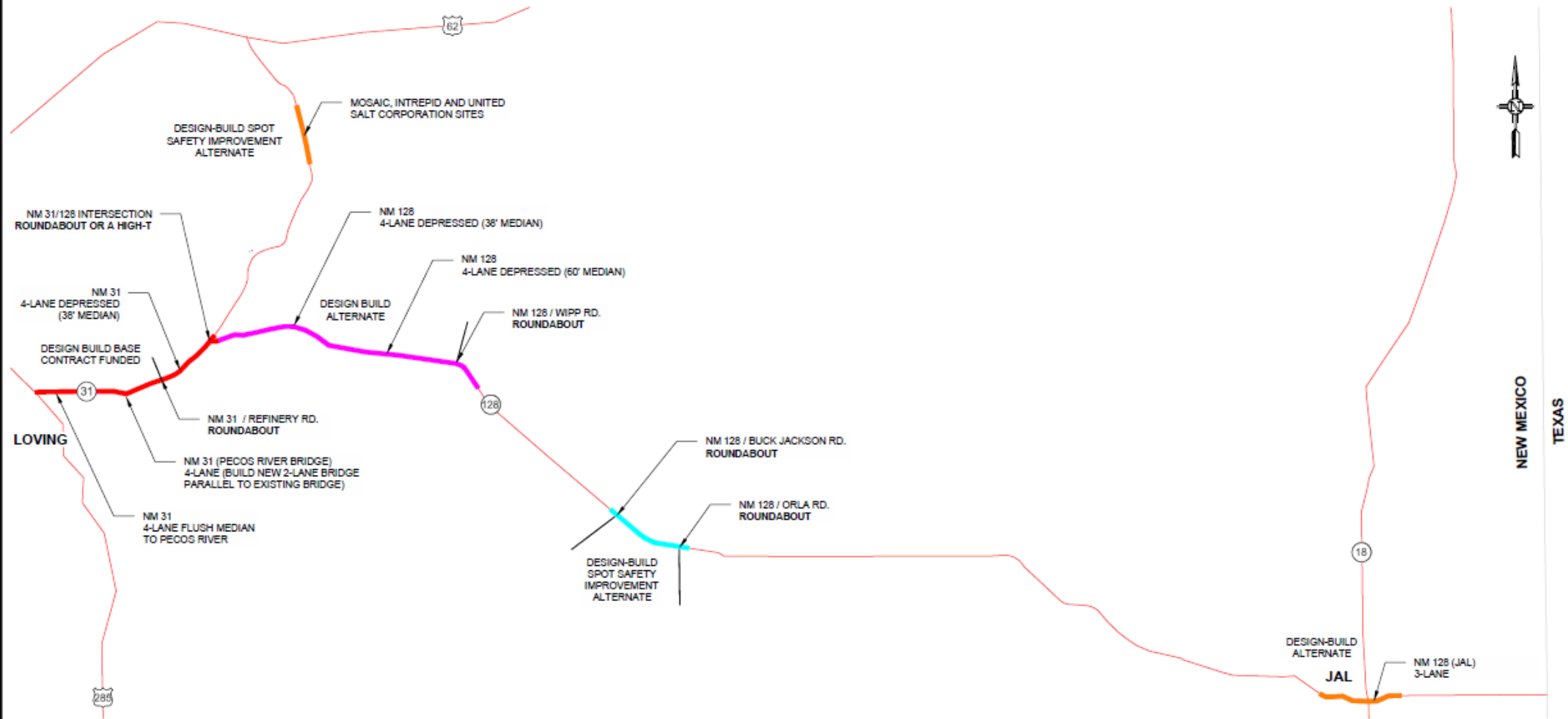
- Mosaic / Intrepid / United Salt Corp. Industrial Areas

### » NM 128

- Orla Road
- Buck Jackson
- Orla Through Buck Jackson Segment
- Red Road, Delaware Basin and Battle Axe interim intersection improvements
- Interim Centerline Rumble Strips



# Design-Build Overview Map



NM 31 CORRIDOR			
SEGMENT	MILEPOST	TYPICAL SECTION	KEY FEATURES
1	0.5 TO 8.0	4-LANE FLUSH MEDIAN TO THE PECOS RIVER AND 38' DEPRESSED MEDIAN FROM THERE TO NM 31-128 INTERSECTION	PECOS RIVER BRIDGE, NM 31/REFINERY RD. INTERSECTION: <b>ROUNDABOUT</b> , NM 31/NM 128 INTERSECTION: <b>ROUNDABOUT OR HIGH-T</b>
2	16.5 TO 19.0	2-LANE ENHANCED	MOSAIC, INTREPID AND UNITED SALT CORPORATION

NM 128 CORRIDOR			
SEGMENT	MILEPOST	TYPICAL SECTION	KEY FEATURES
1	0.5 TO 11.8	4-LANE DEPRESSED (38' MEDIAN)	NM 128/WIPP RD. INTERSECTION: <b>ROUNDABOUT</b>
2	19.2 TO 23.0	4-LANE DEPRESSED (60' MEDIAN)	NM 128/BUCK JACKSON & NM 128/ORLA RD. INTERSECTIONS: <b>ROUNDABOUT</b>
3	50.5 TO 53.5	3-LANE	NEW TRAFFIC SIGNALS AT NM 18 AND 3RD STREET IN THE CITY OF JAL

LEGEND	
	N.M. HIGHWAY
	STATE BORDER

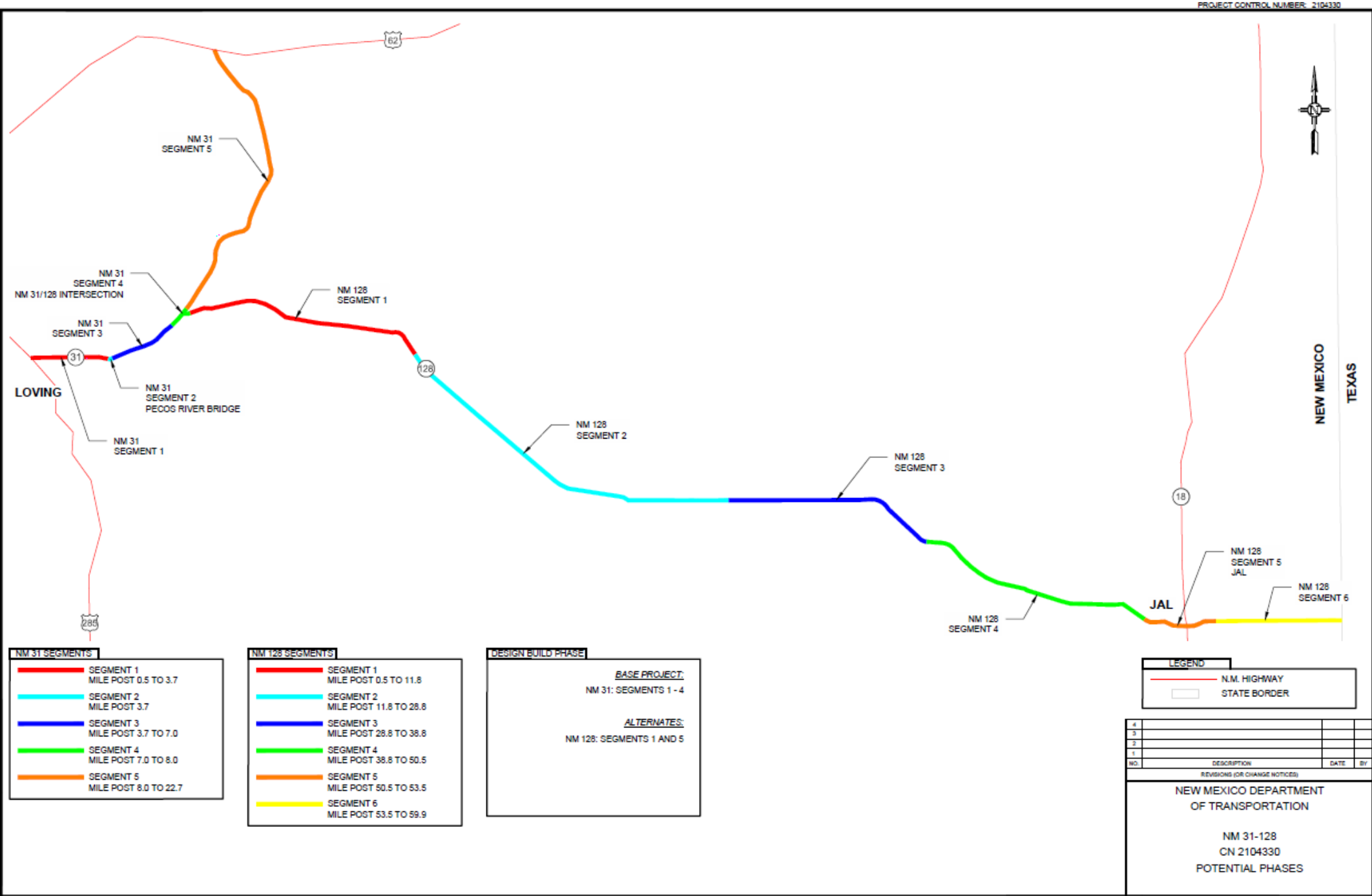
NO.	DESCRIPTION	DATE	BY
4			
3			
2			
1			

NEW MEXICO DEPARTMENT  
OF TRANSPORTATION

NM 31-128  
CN 2104330  
PHASE 1AB STUDY  
DESIGN BUILD PHASES



# Conceptual Project Phasing





# Schedule and Next Steps

# Project Schedule

- ▲ Start of study (Phase IA/B) – **Fall 2020**
  - » Public meeting – **August 2021**
  - » Public meeting – City of Jal – **September 2021**
  - » Public meeting – **May 3, 2022**
  - » Public meeting – City of Jal – **May 24, 2022**
- ▲ Completion of study – **July-August 2022**
- ▲ Initial engineering design development – **Summer 2021 through Summer 2022**
- ▲ Environmental analysis & documentation – **Summer/Fall 2022**
- ▲ Anticipated construction start (Design-Build) – **Summer-Fall 2023**<sup>1,2</sup>
  - » Multiple construction phases depending on funding

← We are Here



1. Estimated
2. Funding dependent



# Next Steps

- ▲ Gather public input
- ▲ Complete the Phase I-A/B Study Report
- ▲ Complete Environmental Documentation
- ▲ Develop Design-Build Contract Documents (RFP) – **Now through Fall 2022**
- ▲ Identify ROW acquisition needs
- ▲ Select Design-Build Team – **Mid 2023**
- ▲ Start Construction of Phase I – **Summer-Fall 2023**



# We Want to Hear from You...

*Please provide us with comments by:  
June 24, 2022*

*Electronic submittals preferred*

## ▲ How to Provide Comments?

- » **Email:** jennifer.hyre@wsp.com
- » **Call:** (505) 878-6577
- » **Mail:** WSP | Jennifer Hyre | Attn: NM 31-128  
2440 Louisiana Blvd NE, Suite 400  
Albuquerque, NM 87110
- » **Comment Form:** project website

## ▲ Project website

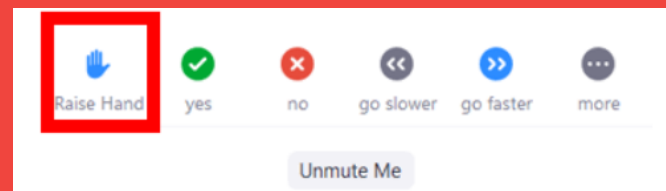
<https://nm31-128project.nmdotprojects.org>

**All Comments are welcome!!**



# Questions

If you would like to speak,  
raise your hand  
Press \*9 if you have dialed-in



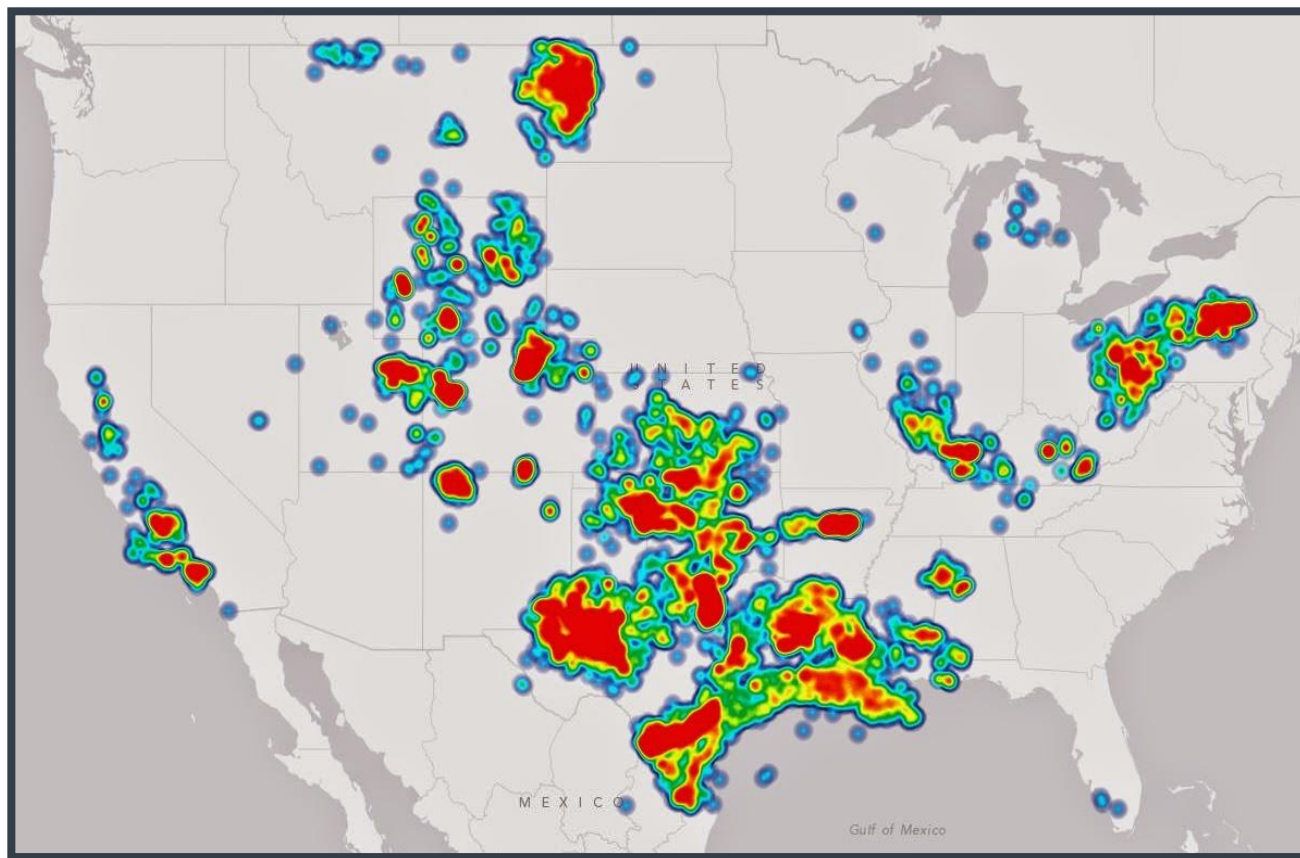


# Oil and Gas Activity

Some of the research we studied

## ▲ Permian Basin Oil & Gas: A **20-mile corridor** of NM 31 and NM 128

» Existing, 5 and 10-year projected activities (current)



Heat Map of Oil & Gas Drilling in the U.S. (DrillingMaps.com, 2014)